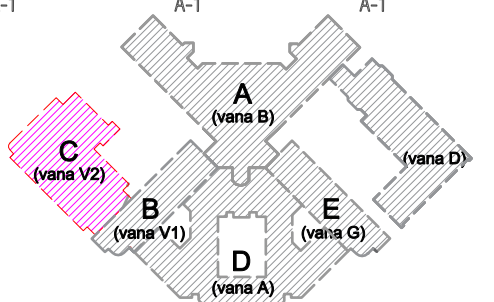


Position number	Name	Product model description	Sum
A1	H321	321 süväs – DIGIDIM Multiensor süv. IP30	16
A3	H314	314 süväs – DIGIDIM Suunatav Mierowave andur süv. IP30	2
A4	HA-S147	Kahalooleku andur süv – pp S147 360° 2000W IP44 valge	34
E2	VR108106	Evakuaatsioonalgusti Suunaviit Glomox, Verso-R GR E3/DALI, kahepoolne kupliga	10
H1	4008321957344	Osram DALI analoog dimmer 315/220–240 25X1	4
H2	H432	492 – Helvar DALI releemoodul 16A	4
H3	H405	405 – Helvar DALI repeater	1
K1	H910	Helvar ruuter 910, 128 seadet	1
K3	H432	494 – Helvar DALI releemoodul 4x16A	1
K4	H432	494 – Helvar DALI releemoodul 4x16A	1
K5	H432	494 – Helvar DALI releemoodul 4x16A	1
K6	H432	494 – Helvar DALI releemoodul 4x16A	1
K7	H432	494 – Helvar DALI releemoodul 4x16A	1
K8	H432	494 – Helvar DALI releemoodul 4x16A	1
K9	H432	494 – Helvar DALI releemoodul 4x16A	1
K10	H432	494 – Helvar DALI releemoodul 4x16A	1
K11	H432	494 – Helvar DALI releemoodul 4x16A	1
K12	H432	494 – Helvar DALI releemoodul 4x16A	1
K13	H432	494 – Helvar DALI releemoodul 4x16A	1
K14	H432	494 – Helvar DALI releemoodul 4x16A	1
K15	H432	494 – Helvar DALI releemoodul 4x16A	1
K16	H432	494 – Helvar DALI releemoodul 4x16A	1
K17	H432	494 – Helvar DALI releemoodul 4x16A	1
K18	H432	494 – Helvar DALI releemoodul 4x16A	1
K19	H432	494 – Helvar DALI releemoodul 4x16A	1
K20	H432	494 – Helvar DALI releemoodul 4x16A	1
K21	H432	494 – Helvar DALI releemoodul 4x16A	1
K22	H432	494 – Helvar DALI releemoodul 4x16A	1
K23	H432	494 – Helvar DALI releemoodul 4x16A	1
K24	H432	494 – Helvar DALI releemoodul 4x16A	1
K25	H432	494 – Helvar DALI releemoodul 4x16A	1
K26	H432	494 – Helvar DALI releemoodul 4x16A	1
K27	H432	494 – Helvar DALI releemoodul 4x16A	1
K28	H432	494 – Helvar DALI releemoodul 4x16A	1
K29	H432	494 – Helvar DALI releemoodul 4x16A	1
K30	H432	494 – Helvar DALI releemoodul 4x16A	1
K31	H432	494 – Helvar DALI releemoodul 4x16A	1
K32	H432	494 – Helvar DALI releemoodul 4x16A	1
K33	H432	494 – Helvar DALI releemoodul 4x16A	1
K34	H432	494 – Helvar DALI releemoodul 4x16A	1
K35	H432	494 – Helvar DALI releemoodul 4x16A	1
K36	H432	494 – Helvar DALI releemoodul 4x16A	1
K37	H432	494 – Helvar DALI releemoodul 4x16A	1
K38	H432	494 – Helvar DALI releemoodul 4x16A	1
K39	H432	494 – Helvar DALI releemoodul 4x16A	1
K40	H432	494 – Helvar DALI releemoodul 4x16A	1
K41	H432	494 – Helvar DALI releemoodul 4x16A	1
K42	H432	494 – Helvar DALI releemoodul 4x16A	1
K43	H432	494 – Helvar DALI releemoodul 4x16A	1
K44	H432	494 – Helvar DALI releemoodul 4x16A	1
K45	H432	494 – Helvar DALI releemoodul 4x16A	1
K46	H432	494 – Helvar DALI releemoodul 4x16A	1
K47	H432	494 – Helvar DALI releemoodul 4x16A	1
K48	H432	494 – Helvar DALI releemoodul 4x16A	1
K49	H432	494 – Helvar DALI releemoodul 4x16A	1
K50	H432	494 – Helvar DALI releemoodul 4x16A	1
K51	H432	494 – Helvar DALI releemoodul 4x16A	1
K52	H432	494 – Helvar DALI releemoodul 4x16A	1
K53	H432	494 – Helvar DALI releemoodul 4x16A	1
K54	H432	494 – Helvar DALI releemoodul 4x16A	1
K55	H432	494 – Helvar DALI releemoodul 4x16A	1
K56	H432	494 – Helvar DALI releemoodul 4x16A	1
K57	H432	494 – Helvar DALI releemoodul 4x16A	1
K58	H432	494 – Helvar DALI releemoodul 4x16A	1
K59	H432	494 – Helvar DALI releemoodul 4x16A	1
K60	H432	494 – Helvar DALI releemoodul 4x16A	1
K61	H432	494 – Helvar DALI releemoodul 4x16A	1
K62	H432	494 – Helvar DALI releemoodul 4x16A	1
K63	H432	494 – Helvar DALI releemoodul 4x16A	1
K64	H432	494 – Helvar DALI releemoodul 4x16A	1
K65	H432	494 – Helvar DALI releemoodul 4x16A	1
K66	H432	494 – Helvar DALI releemoodul 4x16A	1
K67	H432	494 – Helvar DALI releemoodul 4x16A	1
K68	H432	494 – Helvar DALI releemoodul 4x16A	1
K69	H432	494 – Helvar DALI releemoodul 4x16A	1
K70	H432	494 – Helvar DALI releemoodul 4x16A	1
K71	H432	494 – Helvar DALI releemoodul 4x16A	1
K72	H432	494 – Helvar DALI releemoodul 4x16A	1
K73	H432	494 – Helvar DALI releemoodul 4x16A	1
K74	H432	494 – Helvar DALI releemoodul 4x16A	1
K75	H432	494 – Helvar DALI releemoodul 4x16A	1
K76	H432	494 – Helvar DALI releemoodul 4x16A	1
K77	H432	494 – Helvar DALI releemoodul 4x16A	1
K78	H432	494 – Helvar DALI releemoodul 4x16A	1
K79	H432	494 – Helvar DALI releemoodul 4x16A	1
K80	H432	494 – Helvar DALI releemoodul 4x16A	1
K81	H432	494 – Helvar DALI releemoodul 4x16A	1
K82	H432	494 – Helvar DALI releemoodul 4x16A	1
K83	H432	494 – Helvar DALI releemoodul 4x16A	1
K84	H432	494 – Helvar DALI releemoodul 4x16A	1
K85	H432	494 – Helvar DALI releemoodul 4x16A	1
K86	H432	494 – Helvar DALI releemoodul 4x16A	1
K87	H432	494 – Helvar DALI releemoodul 4x16A	1
K88	H432	494 – Helvar DALI releemoodul 4x16A	1
K89	H432	494 – Helvar DALI releemoodul 4x16A	1
K90	H432	494 – Helvar DALI releemoodul 4x16A	1
K91	H432	494 – Helvar DALI releemoodul 4x16A	1
K92	H432	494 – Helvar DALI releemoodul 4x16A	1
K93	H432	494 – Helvar DALI releemoodul 4x16A	1
K94	H432	494 – Helvar DALI releemoodul 4x16A	1
K95	H432	494 – Helvar DALI releemoodul 4x16A	1
K96	H432	494 – Helvar DALI releemoodul 4x16A	1
K97	H432	494 – Helvar DALI releemoodul 4x16A	1
K98	H432	494 – Helvar DALI releemoodul 4x16A	1
K99	H432	494 – Helvar DALI releemoodul 4x16A	1
K100	H432	494 – Helvar DALI releemoodul 4x16A	1
K101	H432	494 – Helvar DALI releemoodul 4x16A	1
K102	H432	494 – Helvar DALI releemoodul 4x16A	1
K103	H432	494 – Helvar DALI releemoodul 4x16A	1
K104	H432	494 – Helvar DALI releemoodul 4x16A	1
K105	H432	494 – Helvar DALI releemoodul 4x16A	1
K106	H432	494 – Helvar DALI releemoodul 4x16A	1
K107	H432	494 – Helvar DALI releemoodul 4x16A	1
K108	H432	494 – Helvar DALI releemoodul 4x16A	1
K109	H432	494 – Helvar DALI releemoodul 4x16A	1
K110	H432	494 – Helvar DALI releemoodul 4x16A	1
K111	H432	494 – Helvar DALI releemoodul 4x16A	1
K112	H432	494 – Helvar DALI releemoodul 4x16A	1
K113	H432	494 – Helvar DALI releemoodul 4x16A	1
K114	H432	494 – Helvar DALI releemoodul 4x16A	1
K115	H432	494 – Helvar DALI releemoodul 4x16A	1
K116	H432	494 – Helvar DALI releemoodul 4x16A	1
K117	H432	494 – Helvar DALI releemoodul 4x16A	1
K118	H432	494 – Helvar DALI releemoodul 4x16A	1
K119	H432	494 – Helvar DALI releemoodul 4x16A	1
K120	H432	494 – Helvar DALI releemoodul 4x16A	1
K121	H432	494 – Helvar DALI releemoodul 4x16A	1
K122	H432	494 – Helvar DALI releemoodul 4x16A	1
K123	H432	494 – Helvar DALI releemoodul 4x16A	1
K124	H432	494 – Helvar DALI releemoodul 4x16A	1
K125	H432	494 – Helvar DALI releemoodul 4x16A	1
K126	H432	494 – Helvar DALI releemoodul 4x16A	1
K127	H432	494 – Helvar DALI releemoodul 4x16A	1
K128	H432	494 – Helvar DALI releemoodul 4x16A	1
K129	H432	494 – Helvar DALI releemoodul 4x16A	1
K130	H432	494 – Helvar DALI releemoodul 4x16A	1
K131	H432	494 – Helvar DALI releemoodul 4x16A	1
K132	H432	494 – Helvar DALI releemoodul 4x16A	1
K133	H432	494 – Helvar DALI releemoodul 4x16A	1
K134	H432	494 – Helvar DALI releemoodul 4x16A	1
K135	H432	494 – Helvar DALI releemoodul 4x16A	1
K136	H432	494 – Helvar DALI releemoodul 4x16A	1
K137	H432	494 – Helvar DALI releemoodul 4x16A	1
K138	H432	494 – Helvar DALI releemoodul 4x16A	1
K139	H432	494 – Helvar DALI releemoodul 4x16A	1
K140	H432	494 – Helvar DALI releemoodul 4x16A	1
K141	H432	494 – Helvar DALI releemoodul 4x16A	1
K142	H432	494 – Helvar DALI releemoodul 4x16A	1
K143	H432	494 – Helvar DALI releemoodul 4x16A	1
K144	H432	494 – Helvar DALI releemoodul 4x16A	1
K145	H432	494 – Helvar DALI releemoodul 4x16A	1
K146	H432	494 – Helvar DALI releemoodul 4x16A	1
K147	H432	494 – Helvar DALI releemoodul 4x16A	1
K148	H432	494 – Helvar DALI releemoodul 4x16A	1
K149	H432	494 – Helvar DALI releemoodul 4x16A	1
K150	H432	494 – Helvar DALI releemoodul 4x16A	1
K151	H432	494 – Helvar DALI releemoodul 4x16A	1
K152	H432	494 – Helvar DALI releemoodul 4x16A	1
K153	H432	494 – Helvar DALI releemoodul 4x16A	1
K154	H432	494 – Helvar DALI releemoodul 4x16A	1
K155	H432	494 – Helvar DALI releemoodul 4x16A	1
K156	H432	494 – Helvar DALI releemoodul 4x16A	1
K157	H432	494 – Helvar DALI releemoodul 4x16A	1
K158	H432	494 – Helvar DALI releemoodul 4x16A	1
K159	H432	494 – Helvar DALI releemoodul 4x16A	1
K160	H432	494 – Helvar DALI releemoodul 4x16A	1
K161	H432	494 – Helvar DALI releemoodul 4x16A	1
K162	H432	494 – Helvar DALI releemoodul 4x16A	1
K163	H432	494 – Helvar DALI releemoodul 4x16A	1
K164	H432	494 – Helvar DALI releemoodul 4x16A	1
K165	H432	494 – Helvar DALI releemoodul 4x16A	1
K166	H432	494 – Helvar DALI releemoodul 4x16A	1
K167	H432	494 – Helvar DALI releemoodul 4x16A	1
K168	H432	494 – Helvar DALI releemoodul 4x16A	1
K169	H432	494 – Helvar DALI releemoodul 4x16A	1
K170	H432	494 – Helvar DALI releemoodul 4x16A	1
K171	H432	494 – Helvar DALI releemoodul 4x16A	1
K172	H432	494 – Helvar DALI releemoodul 4x16A	1
K173	H432	494 – Helvar DALI releemoodul 4x16A	1
K174	H432	494 – Helvar DALI releemoodul 4x16A	1
K175	H432	494 – Helvar DALI releemoodul 4x16A	1
K176	H432	494 – Helvar DALI releemoodul 4x16A	1
K177	H432	494 – Helvar DALI releemoodul 4x16A	1
K178	H432	494 – Helvar DALI releemoodul 4x16A	1
K179	H432	494 – Helvar DALI releemoodul 4x16A	1
K180	H432	494 – Helvar DALI releemoodul 4x16A	1
K181	H432	494 – Helvar DALI releemoodul 4x16A	1
K182	H432	494 – Helvar DALI releemoodul 4x16A	1
K183	H432	494 – Helvar DALI releemoodul 4x16A	1
K184	H432	494 – Helvar DALI releemoodul 4x16A	1
K185	H432	494 – Helvar DALI releemoodul 4x16A	1
K186	H432	494 – Helvar DALI releemoodul 4x16A	1
K187	H432	494 – Helvar DALI releemoodul 4x16A	1
K188	H432	494 – Helvar DALI releemoodul 4x16A	1
K189	H432	494 – Helvar DALI releemoodul 4x16A	1
K190	H432	494 – Helvar DALI releemoodul 4x16A	1
K191	H432	494 – Helvar DALI releemoodul 4x16A	1
K192	H432	494 – Helvar DALI releemoodul 4x16A	1
K193	H432	494 – Helvar DALI releemoodul 4x16A	1
K194	H432	494 – Helvar DALI releemoodul 4x16A	1
K195	H432	494 – Helvar DALI releemoodul 4x16A	1
K196	H432	494 – Helvar DALI releemoodul 4x16A	1
K197	H432	494 – Helvar DALI releemoodul 4x16A	1
K198	H432	494 – Helvar DALI releemoodul 4x16A	1
K199	H432	494 – Helvar DALI releemoodul 4x16A	1
K200	H432	494 – Helvar DALI releemoodul 4x16A	1

MÄRKUSED JA NÕUDED:
 PINGSÜSTEEM 230V MAANDATUD NEUTRAALIGA.
 ELEKTRIPAIGALDISE PINGE 230V.

- Elektriseadmete normaalselt pingevabad metallkonstruktsioonid maandada, kui seadme valmistaja ei näe ette teisiti (näiteks kahekordse isolatsiooniga seadmed).
- Instalatsioon teha grupivõrgu skeemil toodud kaablitega, kui ei ole näidatud teine kaabel või teine soonte arv, varjatult ripplagede taga või süvistatult hoone konstruktsioonis.
- Lülitite paigalduskõrgus üldjuhul 1,0 m põrandast, kui ei ole näidatud teine paigalduskõrgus.
- Seintest ja vahelagedest läbi viidud teostada TK torudes. Pärast kaablite paigaldamist läbi viidud tihendada tulepüsivalt ja hermeetiliselt vastavalt seinte ja vahelagede tulepüsivastmetele.
- Tubade numbrivalgusti koridorides, paigaldada 1,8m kõrgusele, uksest teisele poole 0,5m

- MÄRKUSED JA NÕUDED:
- Turvavalgustid hakkavad põlema toitekatkestuse ajal.
 - Turvavalgustite tööaeg akureerimis min. 3 tundi.
 - Väijäätöös märkvalgustid tähistega "E" töötavad pidevalt põlevas režiimis.
 - Turvavalgustite sidumine TOA ja ATSiga – kui on ATS häire, siis HEL444 ga võtame ATS signaali. ATS signaali korral peab kogu turvalustus minema püsirežiimi.
 - Kui turvalustusüsteemis rike, siis anname 492 releega signaali TOA süsteemi.



KOOSTAS	T.Ruben	TELLUJA:	MÕÖTKAVA:M1:100	FILE:1263_TP_EL-5-21_2k-V2
KONTROLLIS	K.Kookmaa		LEHT: 6/6	PABER: A2
KINNITAS	K.Hiob	OBJEKT: Keila haigla C korpuse rekonstrueerimine	JOONISE NR.: EL-9-23	
STAADIUM	TP	Elektrivarustuse Tööprojekt		
KUUPÄEV	16.4.2024	Paraj tn. 30, Keila linn		
TÖÖ NR.	1263	NIMETUS: Mõõdistuspunktid		
		2.korrus		

