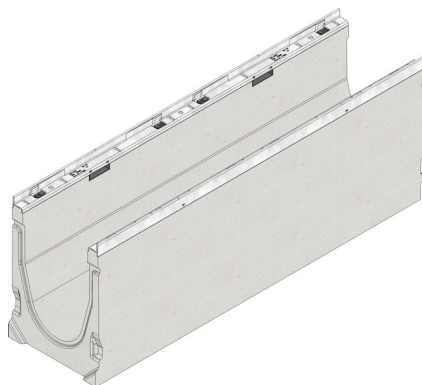


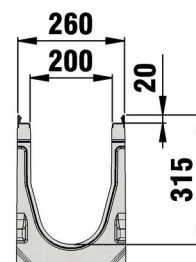
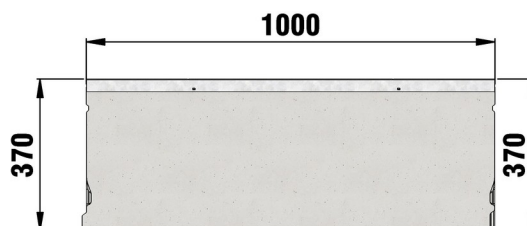
FASERFIX®KS 200



FASERFIX®KS 200 up to load class F 900, Type 020, galvanised, 1.0 m



F 900



■ Technical data:

Length mm	Width mm	Height mm	Weight kg	Inlaying depth	Internal channel cross-sect. cm ²	Item-no.
1000	260	370	94.7	20	512.0	12044

■ Product description:

FASERFIX KS 200 type 020 - Channel body made of fibre-reinforced concrete, load class A 15 - F 900 according to EN 1433, CE compliant, with edge frame made of galvanised steel and boltless quick-locking system SIDE-LOCK for quick and easy installation of the grating, additional locking mechanism applicable, 8-fold locking, with sealing groove, LxWxH 1000x260x370 mm, item no. 12044

■ Material:

- **Channel body:** fibre-reinforced concrete
- **Angle housing:** strip galvanized steel

■ Type acc. DIN EN 1433:

M

■ Set of rules:

EN 1433

■ Application areas:

- Highways and roads
- Architecture and Design
- Stations and platforms
- Facades
- Industrial yards and commercial halls
- Public places
- Communal facilities
- Parking lots
- Parks and gardens
- Underground parking
- Car washes



The optimal use of the product in the aforementioned applications depends on various factors (positioning, traffic load and frequency,...). Our experts will be happy to advise you!

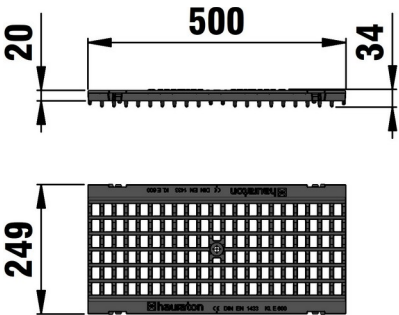
FASERFIX®KS 200



FASERFIX®KS 200, class E 600, GUGI-uctile mesh grating MS 15/25 mm, black, 0,5 m



E 600



■ Technical data:

Length mm	Width mm	Height mm	Weight kg	Inlaying depth	Inlet opening mm	Inlet cross-section cm ² /m	Colour	Item-no.
500	249	34	10.21	20	15.0x25.0	867.0	black	12068

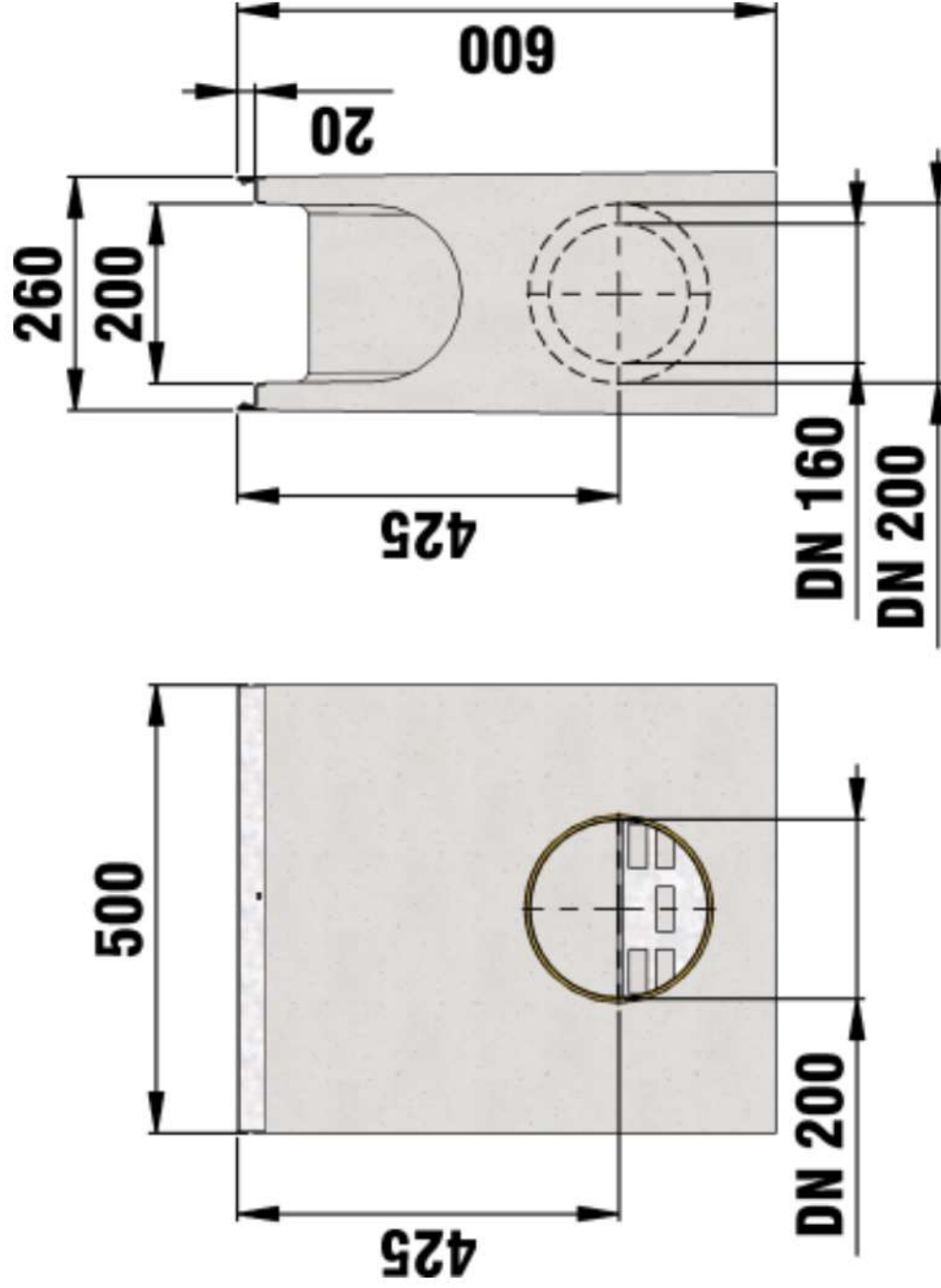
■ Product description:

FASERIFX KS 200 - GUGI-ductile iron mesh grating MS 15/25 mm, made of spheroidal ductile iron GJS 500-7, black, with longitudinal slide protection, load class A 15 - E 600 according to EN 1433, CE compliant, 4-fold locking, installation length 500 mm, item no. 12068

■ Material:

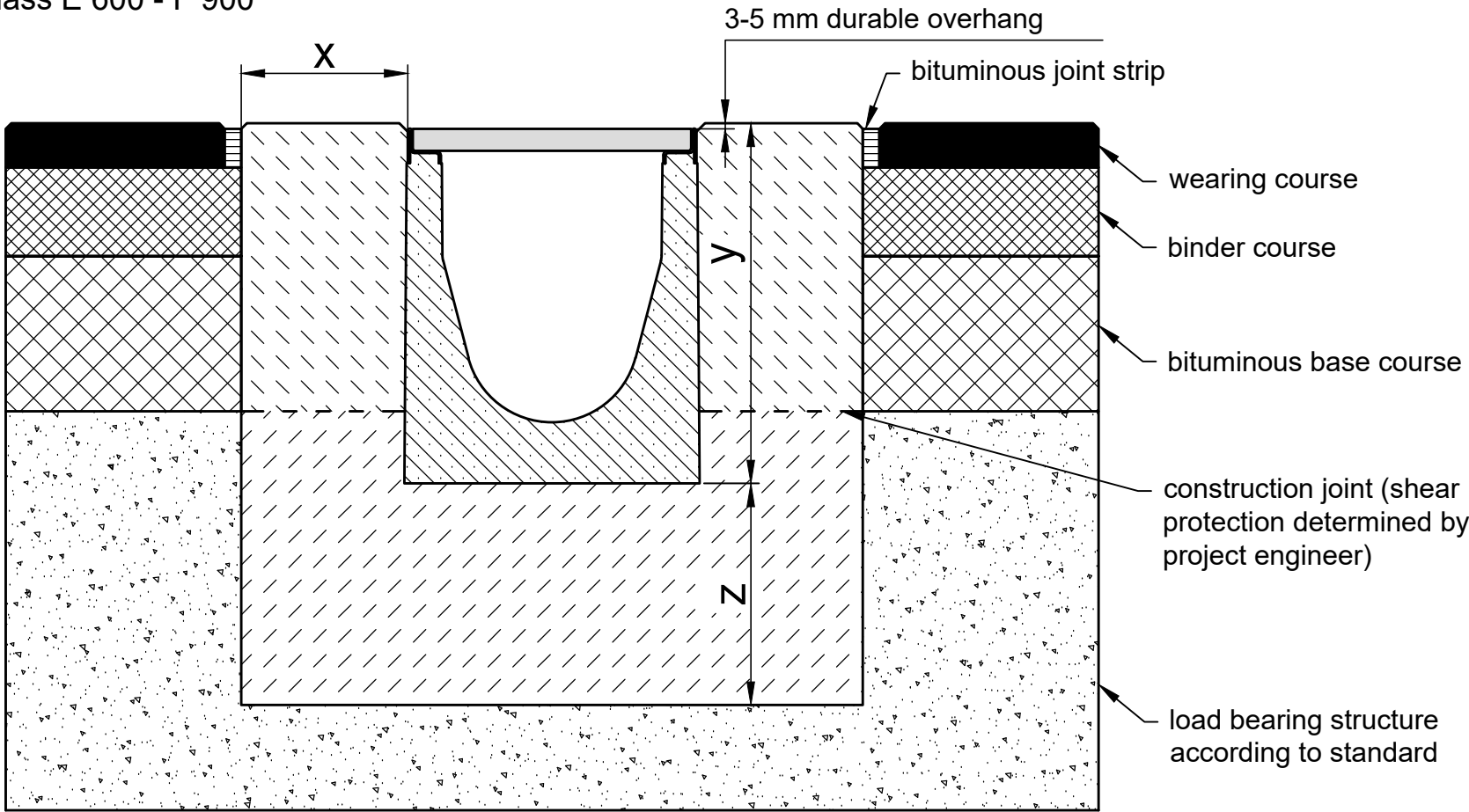
- **Grating:** Ductile iron GJS 500-7

The optimal use of the product in the aforementioned applications depends on various factors (positioning, traffic load and frequency,...). Our experts will be happy to advise you!




Trash boxes for NW 200, with integrated
PVC-U socket DN/OD 200, with galvanised
steel angle housing and galvanised bucket,
0,5 m

Installation Example
in asphalted areas Class E 600 - F 900



* y = Channel height plus camber

Category according to EN 1433 / DIN 19580		A 15	B 125	C 250	D 400**	E 600**	F 900**	Applying to following systems: FASERFIX KS 100, 150, 200				
Foundation: width x / height y / thickness z (in cm)						15 / * / 20	15 / * / 20					
EN 206-1 / DIN 1045-2	quality of concrete stretcher					C30/37 XF4, XM1	C30/37 XF4, XM1					
	without danger of frost on the lateral support					C25/30 X0	C25/30 X0					
	with danger of frost on the lateral support					C25/30 XF3	C25/30 XF3					
The installation examples / advise constantly are adapted to the technical conditions. With new editions older expenditures lose their validity. Before planning or installation please verify the current version at www.hauraton.com In building construction is a sealing layer below the channels necessary.						Date: 12.06.2024		Our general installation instructions apply.		Format DIN	A4	 Werkstr. 13 76437 Rastatt Germany Tel. +49 (0) 72 22 9 58-0 info@hauraton.com
The installation example represents a proven recommendation from HAURATON. The final responsibility for the execution lies with the planner in charge. Specific conditions of the project must be taken into account.										scale	1:6	
* Installation situations of drainage systems with high dynamic loads (e.g. airports, expressways and maneuvering areas of buses, trucks and forklifts, etc.) are not sufficiently considered in DIN EN 1433. Please contact us for such applications to work out project-specific solutions.						0000120242_ENGLISH.dwg		14	EBBw			
						FF-KS-200 Typ 010 Rinnenunterteil Einbaubeispiel Klasse F 900 in Asphalt						

