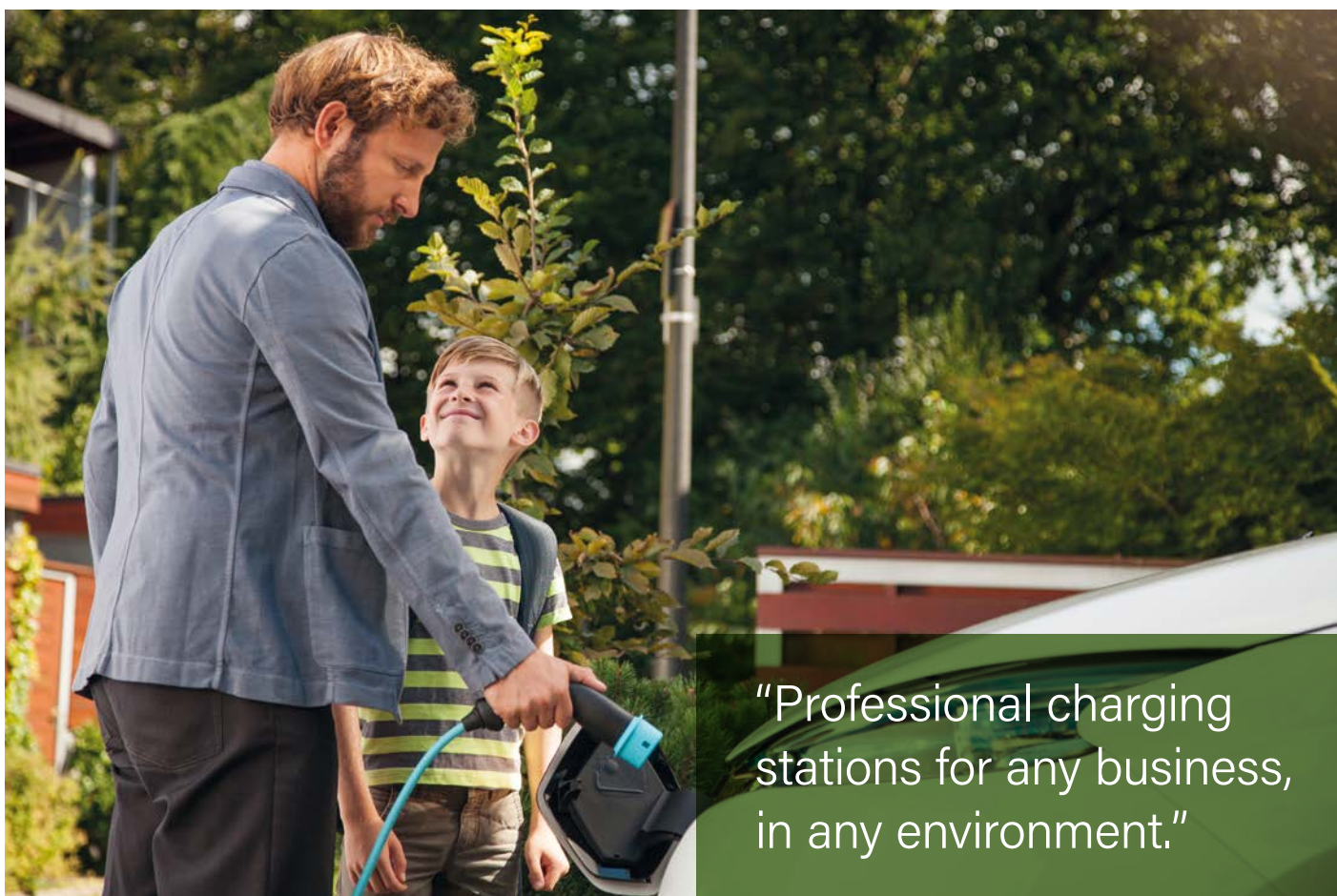




Ensto Pro

EV charging with maximum durability

The intelligent and durable Ensto Pro is a future-proof solution designed for demanding conditions such as on-street locations and areas where the charging point owner wants to offer reliable charging experience.



"Professional charging stations for any business, in any environment."



"Perfect for retailers, fleets, car parks, and more."

Your business, your pleasure

Ensto Pro will serve your business needs everywhere

Robust and safe product design for demanding environments! Ensto Pro is real work-horse for professionals and charging station owners who look for reliability. It includes solid-proof features and abilities for public charging environment to serve EV drivers, owners and EV operators!

IT'S SMART

OCPP1.6 and dynamic load management are basic features of Ensto Pro. On top of which it provides ISO15118 readiness for future needs. With these Ensto Pro qualifies as smartest EV charger on market.

IT'S TOUGH

The full metal structure of Ensto Pro guarantees durability for both the weather (IP54) and external impacts (IK10).

IT'S FLEXIBLE

Agile factory commissioning to back-end systems, inbuilt 4G/LAN/Wifi communication options and wide range of customer tailorings make Ensto Pro the most suitable selection to customers.

IT'S SAFE

Ensto Pro has built-in residual current devices (RCD TypeA/30mA, RCD-DD/6mA) and overcurrent (MCB/32A) protection. This guarantees user safety and installation according to regulations. By having the safety on-board, also simplifies and fastens the installation.





FUTURE PROOF EV CHARGING SOLUTION

- Wide range of connectivities: 4G/LAN/Wifi/EIA-485
- Native OCPP communication
- MID class energy meter
- Built-in single and multi-level load management capabilities (DLM, mDLM)
- ISO15118 support, Plug&Charge certified by Hubject

SIMPLICITY IN INSTALLATIONS

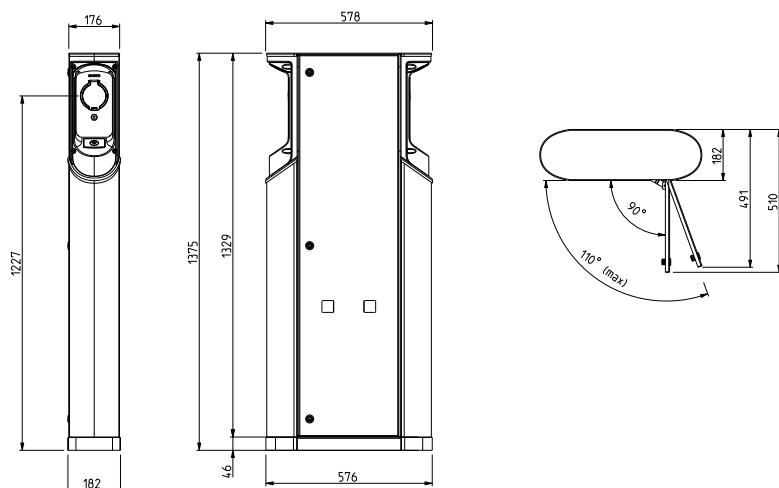
- Supports charging two EVs simultaneously (Mode 3/Type 2 sockets, 2x22kW, adjustable charging current 6A...32A)
- Ground mounting
- Distribution cabinet version (EVF300)

CONVENIENT FOR THE END-USER

- User authentication with RFID/NFC
- Status indicator lights for ease of use (green, blue, red)

ROBUST AND SAFE PRODUCT DESIGN FOR DEMANDING ENVIRONMENTS

- IP54 & IK10
- In-built RCD (Type A) & MCB
- Integrated residual current monitoring module for DC residual current leakage detection (RDC-DD, 6mA)
- Optionally remotely controlled and monitored RCD reclosing functionality (ARD) to improve charger uptime
- Mode 3 lock release



EVF200B-A4BC, EVF200B-B4BC

NEED FOR CUSTOMIZATION?

We provide different product tailoring options from customized stickers and logos over to factory commissioning services. Please contact us to find a perfect solution for your needs!



Ensto Pro offers many possibilities, where EVF300 is Ensto Pro's specific distribution cabinet variant designed especially for the needs of charge point operators and energy companies.

Feature	EVF200B-A4BC	EVF200B-B4BC	EVF300B-A4BC	EVF300B-B4BC
No of charging outlets	2	2	2	2
Distribution cabinet	-	-	■	■
Nominal Power	2x22kW	2x22kW	2x22kW	2x22kW
Nominal charging current	3x32A	3x32A	3x32A	3x32A
Connector type	Mode 3/Type 2	Mode 3/Type 2	Mode 3/Type 2	Mode 3/Type 2
IP class	IP54	IP54	IP54	IP54
IK class	IK10	IK10	IK10	IK10
Communication ¹⁾	4G, LAN, Wifi	4G, LAN, Wifi	4G, LAN, Wifi	4G, LAN, Wifi
Ocpp1.6-JSON	■	■	■	■
DLM, mDLM ²⁾	■	■	■	■
ISO15118	■	■	■	■
RFID reader	■	■	■	■
Energy meter (MID class)	■	■	■	■
RCD Type A + MCB	■	■	■	■
6mA RDC-DD	■	■	■	■
RCD reclosing motor (ARD)	-	■	-	■
Mode3 lock release	■	■	■	■

• Included on the product as standard

- Not available

¹⁾ Communication: 4G (LTE, micro SIM), LAN (Ethernet), Wifi (2,4GHz)

²⁾ DLM, mDLM: Embedded load management functionality. Does not include external meters (if needed for the installation).

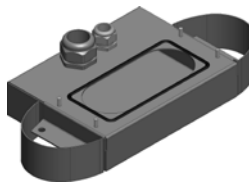
Mechanics	Installation
IEC 61851-1:2019 compliant	Ground mounting
Frame material: • Painted aluminum and stainless steel (RAL9016)	Mounting accessories (EVF200B): • EVTL28.00 (EVF ground installation frame) • EVTL32.00 (EVF ground mounting box, cable entry from bottom) • EVTL34.00 (EVF ground mounting box, cabling from top) • EVTL36.00 (EVF adapter for concrete base) Mounting accessories (EVF300B): • EVTL35.00 (EVF ground mounting box, cable entry from bottom) • EVTL37.00 (EVF adapter for concrete base)
Ingress resistance class: • IP54	Optionally distribution cabinet version (EVF300)
Impact protection class: • IK10	Supported electricity grid: • TN (3-ph) • IT (1-ph, 230Vp-p)
Ambient temperature range • -25 °C - +50 °C	Connection terminals: • L1-3, N, PE Cu 2.5-16 mm ²



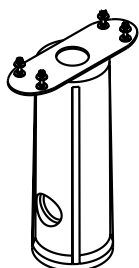
EVTL28.00



EVTL32.00



EVTL34.00



EVTL36.00



EVTL35.00



EVTL37.00



EVF300B



Our EV charging solutions are future-proof with advanced communication and ISO15118 compliance, ensuring compatibility with evolving technologies.

Ensto enables smart EV charging for everyone!

	HOME CHARGING			WORK CHARGING	PUBLIC CHARGING
	ENSTO ONE HOME	ENSTO ONE	ENSTO WALLBOX	ENSTO PRO	ENSTO MEDIA
					
	Super easy and safe home charger. It's the One for you.	Easy and smart home charging at apartment buildings or shared parking.	Modular solution for single or dual EV charging. Compact and user-friendly design.	An easy-to-use, long lifetime AC charging station for public EV charging.	Uniquely combines EV charging and outdoor advertisement with its stunning digital display.
1-PHASE	x	x	x	x	x
3-PHASE	x	x	x	x	x
KW / OUTLET	3,6 / 7,4 / 11 / 22	3,6 / 7,4 / 11 / 22	22	22	22
SMART	Local load management	x ³⁾	x	x	x
DATA CONNECTION	-	Ethernet	4G/LAN/Wifi	4G/LAN/Wifi	LAN/4G
FIXED CABLE	x	-	-	-	-
CABLE RELEASE	-	x	x	x	x
CABLE RELEASE	A or built-in ¹⁾	built-in	A or built-in ¹⁾	built-in	built-in
NEEDED RCD	1	1	1-2	2	2
CHARGING OUTLETS	x ¹⁾	x ⁴⁾	x ⁴⁾	x ⁴⁾	x ⁴⁾
USER CONTROL	-	x ²⁾	x	x	x
LOAD MANAGEMENT	-	x	x	x	x
MID-METER	-	-	-	-	-

¹⁾ Charger Control app

²⁾ Cloud based, internet access mandatory

³⁾ Cloud-based OCPP communication for EV Operators

⁴⁾ In-built RFID reader, EV Operator specific solutions via OCPP