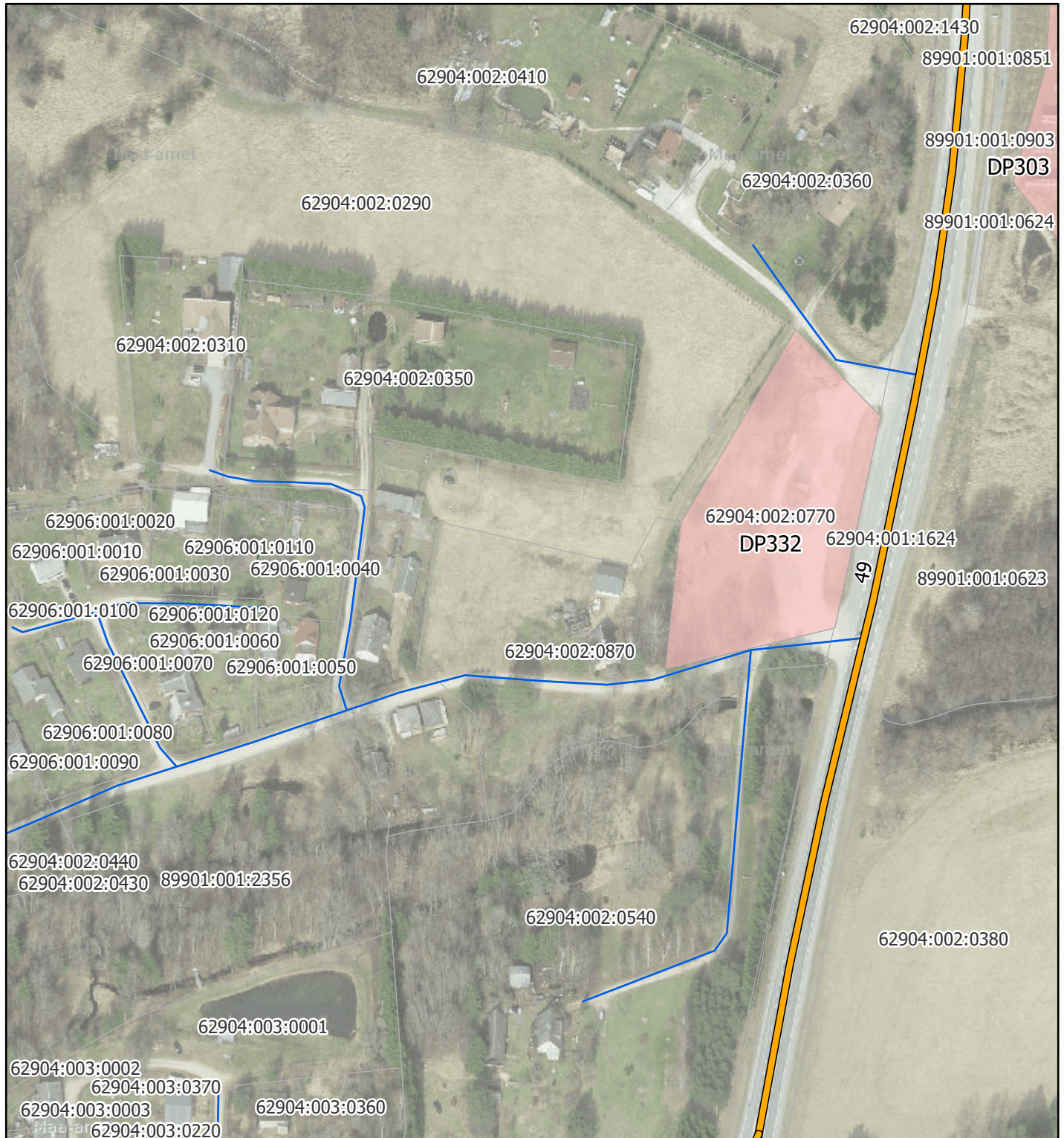
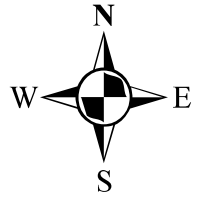






Lisa 1
ORIKA TEE 2 detailplaneeringuala (DP332) ASENDIPLAAN Sinialliku külas

M1:2 000



-  detailplaneeringuala
-  riigitee
-  valla- ja erateed
-  katastriüksuse piir (seisuga 01.11.2022)

Asendiplaani koostas:
18.11.2022

Raivo Laidma, planeeringuspetsialist
Viljandi Vallavalitsus

Aluskaart: Maa-amet WMS