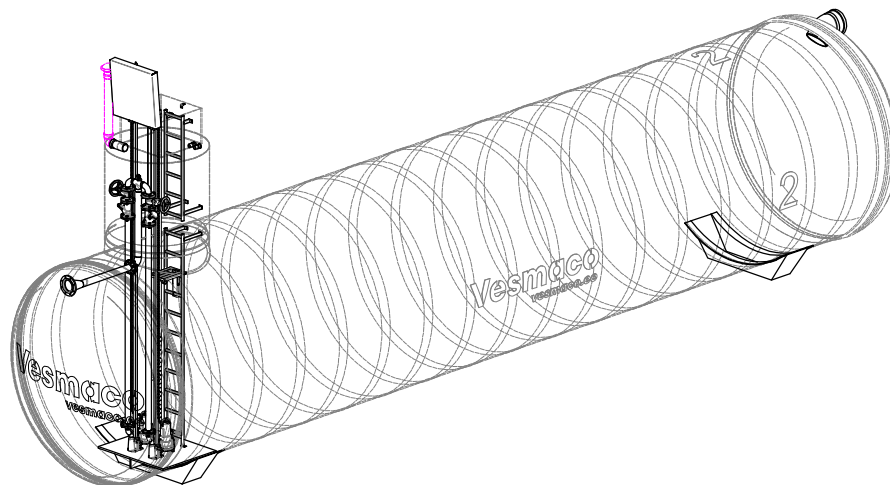
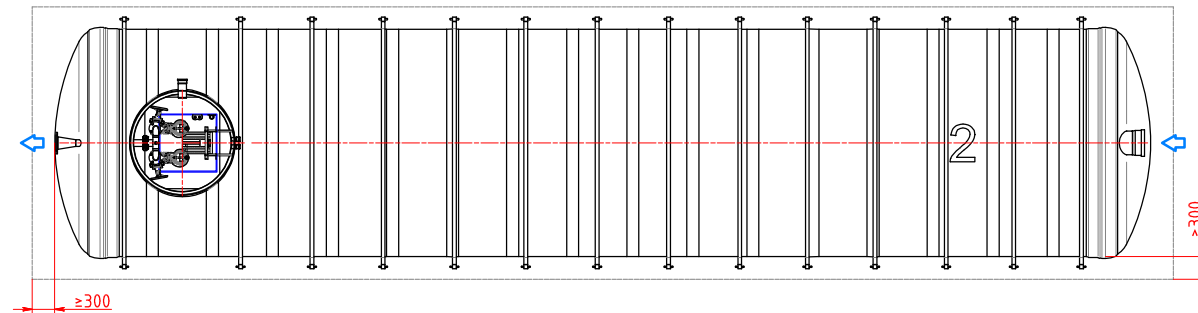
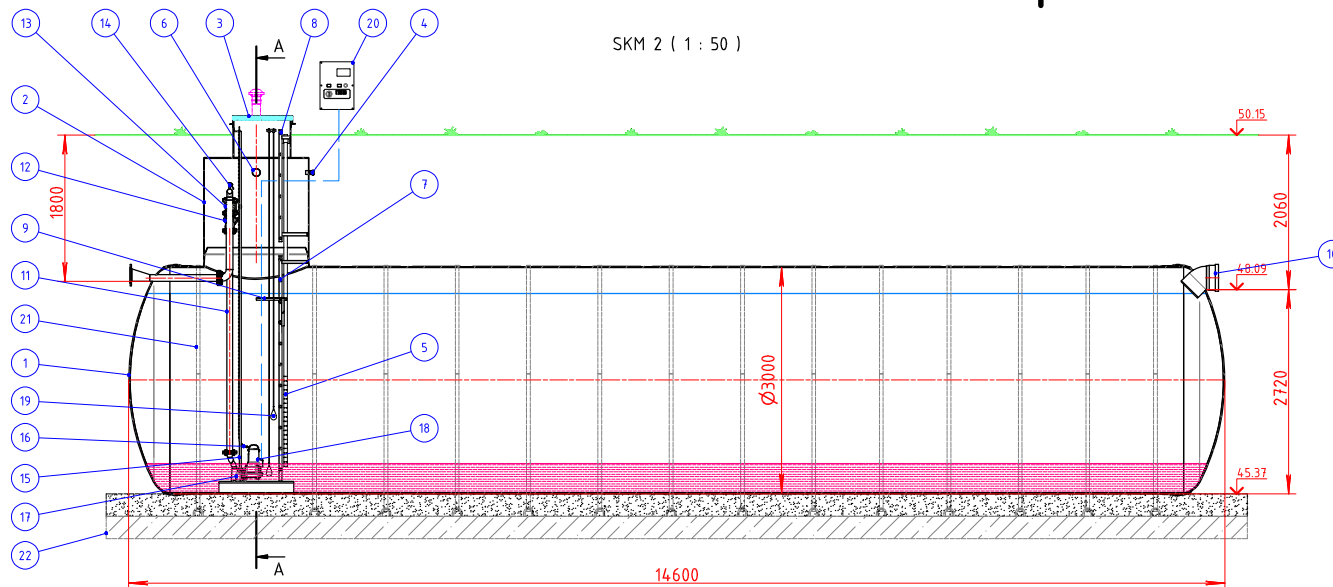


SKM 2 (1 : 50)

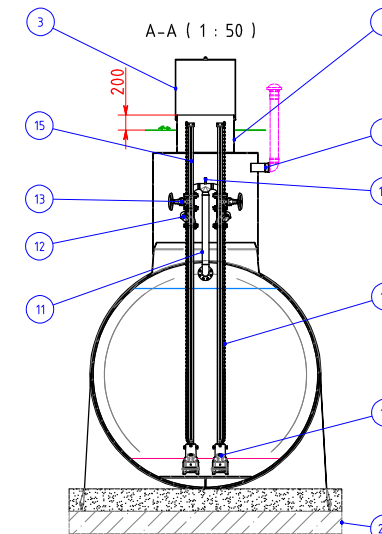


h = (installation height, mm)

h = _____ mm

"For installation instructions, check ""Installation Manual for Underground Horizontal Tanks of Glass-Reinforced Plastic (GRP)"" or special instructions provided with the product.
Positions of anchoring and anchor straps are shown as example and might vary from their actual positions."

Vesmaco OÜ reserves the right to make unilaterally changes.



1	Mahuti-pumpla / Pumping station MEP-100	Ø3000x14600 mm	1
Klaasplastik (GRP) "Vesmaco Composite", pH 3-10, temperatuuri taluvus max 40°C / Glass-reinforce plastic (GRP) "Vesmaco Composite", pH 3-10, heat resistance max 40°C			
Maht / Total volume		100100 l	
Kasulik maht / Working volume		86300 l	
2	Hoiduskaev / Manhole	GRP	Ø1400/750x750 mm
3	Luuk / Cover	Aluminium + PUR	750x750 mm
4	Kaabli siseseviik / Cable aperture	PVC	D50
5	Kaablikaitseseoru / Hydrofaic sensor conduit	PVC	D50
6	Vent. ühendus / Ventilation connection	PVC	DN110
7	Redel / Ladder with no-slip steps	EN 14307/304L	h= 2,5-3 m
8	Redel / Ladder with no-slip steps	EN 14307/304L	h= 1,5-2 m
9	Platvorm / Service step-platform (foldable)	EN 14307/304L	
10	Sissevootoru / Inlet pipe	PVC NAL	D315 SN8
11	Survetorustik (PP-kattega äärikud) / Pressure pipeline (PP-coated flanges)	EN 14307/304L	DN65/DN150 PN10
12	Tagasilööklapp / Ball check valve	Cast iron	DN65 PN10
13	Kummikülsiber / Gate valve	Cast iron	DN65 PN10
14	Kuulventiil / Pressure gauge (manometer) connection	EN 14404/316L	G 1/2"
15	Pumba juhtsin / Pump guide rail	EN 14307/304L	Ø26,9x2 mm
16	Pumba tõstekett / Lifting chain	EN 14404/316L	D5/6
17	Põhjalitmik / Auto-coupling Flygt DN50		
18	Pump / NP 3069.160 SH 3- Adaptive 270 50 Hz 2.4 kW		
19	Ujuklüliti / Float switch		
20	Juhtimiskip / Pumps controller		
21	Ankurdusrühm / Anchor strap (polyester) with tensioner (galv. steel)		
22	Alusplaat / Anchore plate (client's supply)	R/C	
Technical reference		Created by	Approved by
Jevgeni Toom		Maksim Bozhko	Jevgeni Toom
Title, Supplementary title			
Sadamevee mahuti-pumpla 100 m³, No. 2 / Stormwater storage tank 100 m³, No. 2			A2 1 : 50
Document type		Document status	Date of issue
General assembly drawing		Customer drawing	29.09.2023
		Rev.	C 1/1
Vesmaco		23051611_MEP-100_D3000-L14600-DN50-65	
Vesmaco OÜ		Customer	
Käthevapi 6, 11412 Tallinn, Estonia		03 TECHNOLOGY OÜ	
www.vesmaco.ee		Project	
		Ravila tn. 77, Tartu	