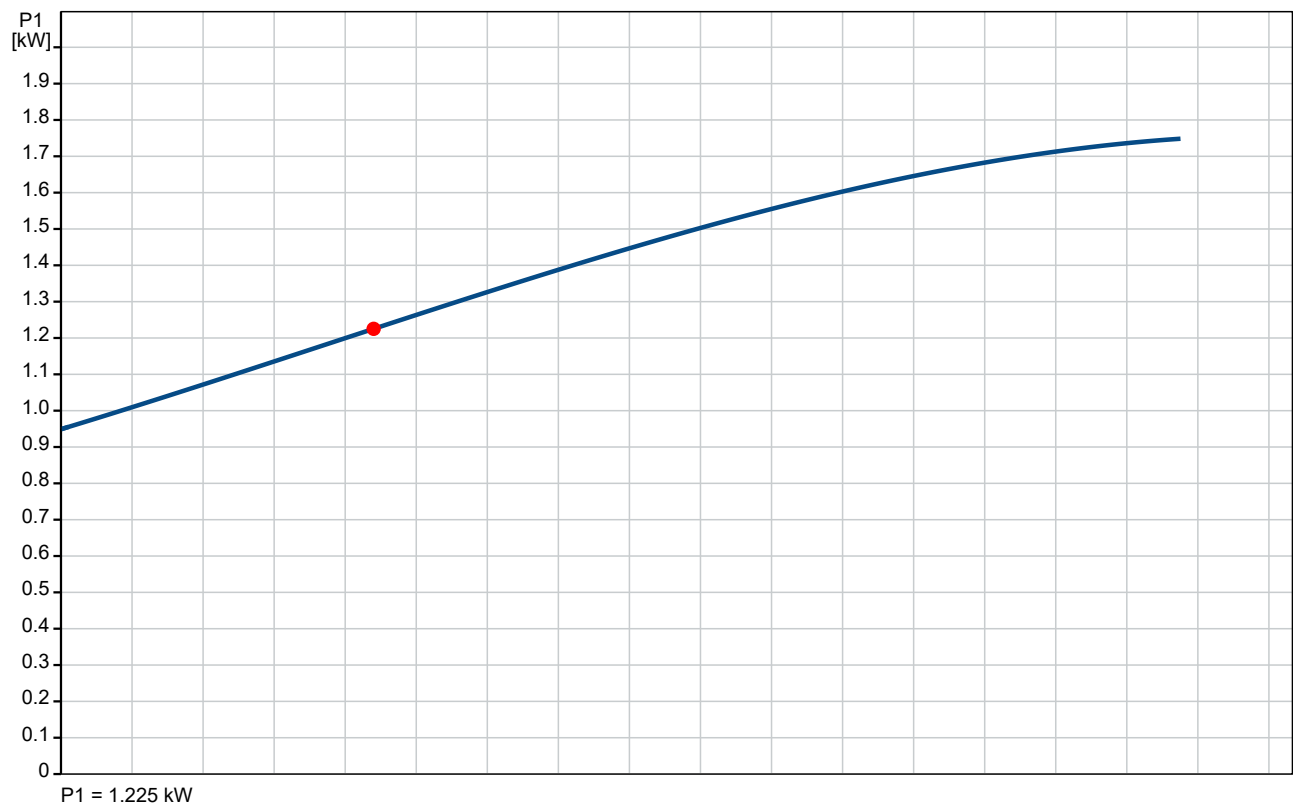
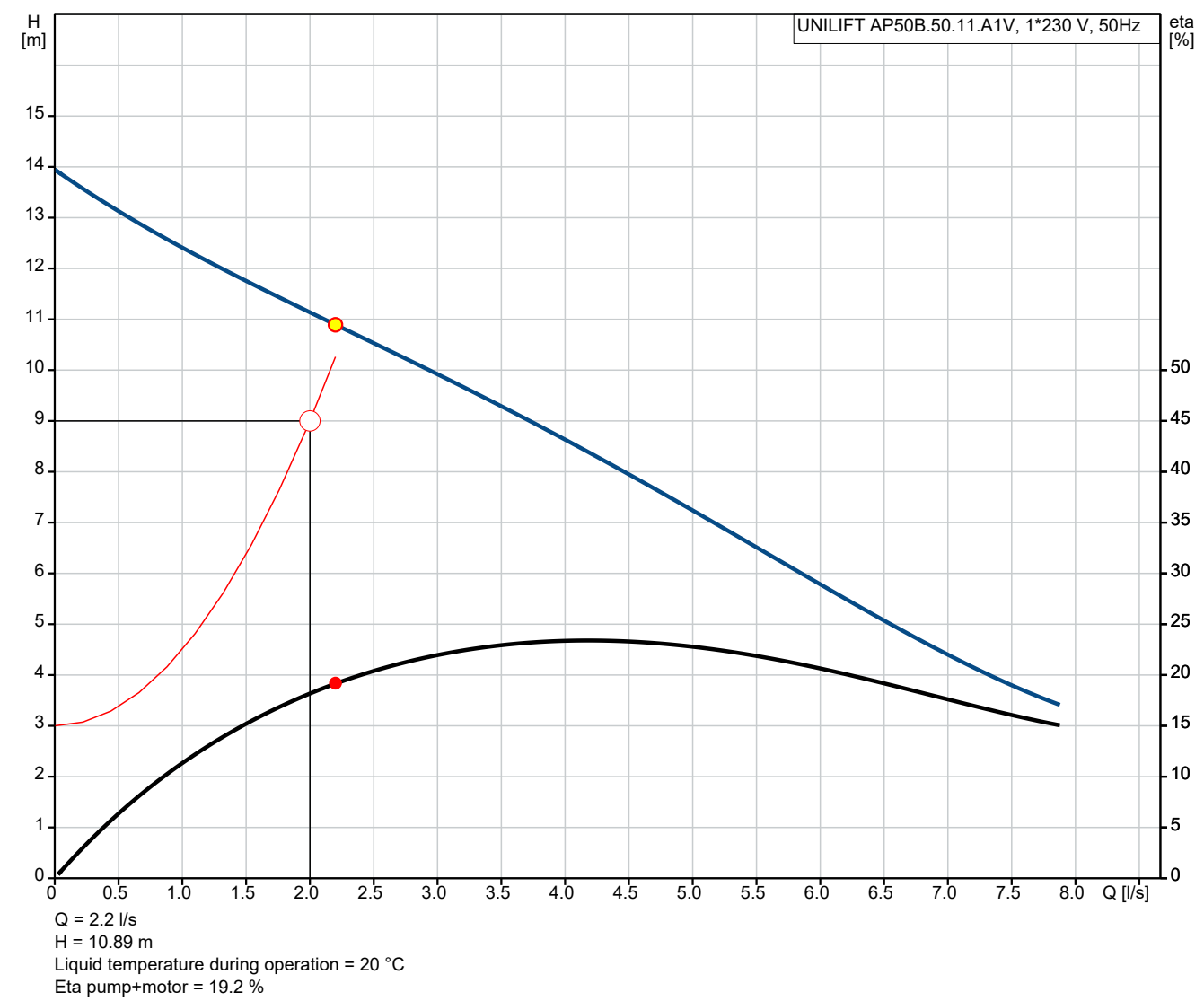
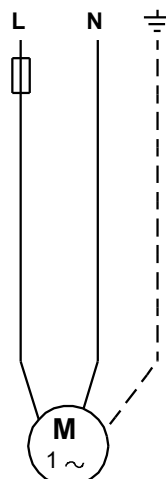
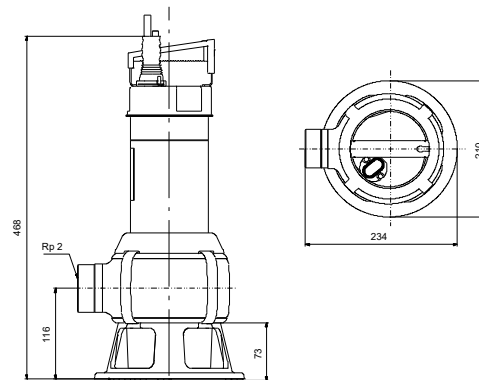
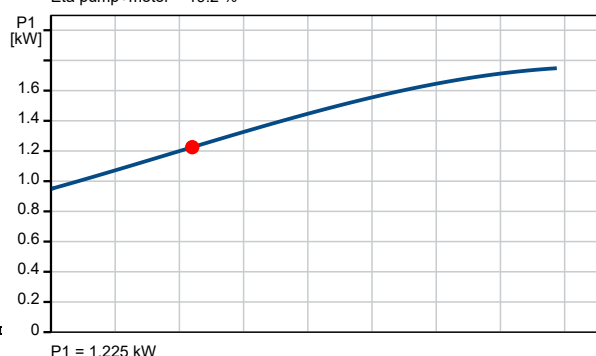
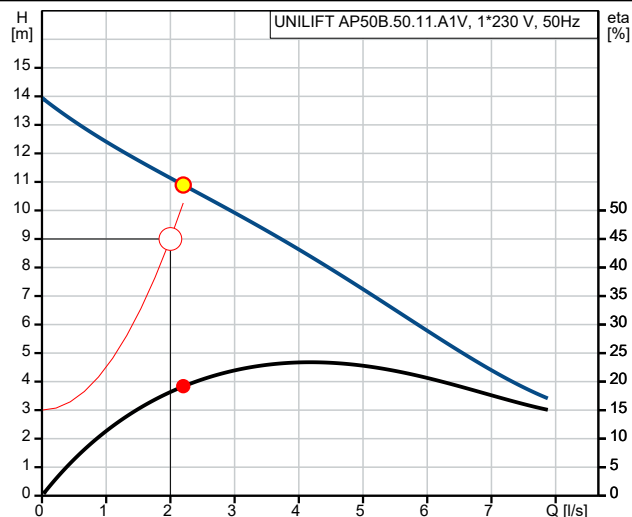


Qty.	Description
1	<div data-bbox="201 159 504 188" data-label="Section-Header"> <p>UNILIFT AP50B.50.11.A1V</p> </div> <div data-bbox="319 217 464 512" data-label="Image"> </div> <div data-bbox="595 506 1064 530" data-label="Text"> <p>Note! Product picture may differ from actual product</p> </div> <div data-bbox="201 537 491 564" data-label="Text"> <p>Product No.: 96468352</p> </div> <div data-bbox="201 566 491 595" data-label="Text"> <p>Submersible effluent pump</p> </div> <div data-bbox="201 624 716 712" data-label="Text"> <p>Vertical single-stage stainless steel submersible pump with integrated submersible 1-phase motor.</p> </div> <div data-bbox="201 743 699 862" data-label="Text"> <p>The pump is fitted with ring stand and carrying handle and is supplied with a 10 m mains cable and a level switch for automatic start and stop.</p> </div> <div data-bbox="201 891 679 1010" data-label="Text"> <p>The impeller is a VORTEX impeller for 50 mm free passage suitable for pumping surface water, groundwater, wastewater and similar.</p> </div> <div data-bbox="201 1041 722 1128" data-label="Text"> <p>The pump has a double shaft seal and an intermediate oil chamber pre-filled with non-toxic special oil.</p> </div> <div data-bbox="201 1160 735 1249" data-label="Text"> <p>The motor is insulation class F with thermal overload protection and has long-life deep-groove greased-for-life ball bearings.</p> </div> <div data-bbox="201 1279 699 1368" data-label="Text"> <p>The pump has Rp 2 inch discharge port and is ready for installation either free-standing or on an auto-coupling system.</p> </div>

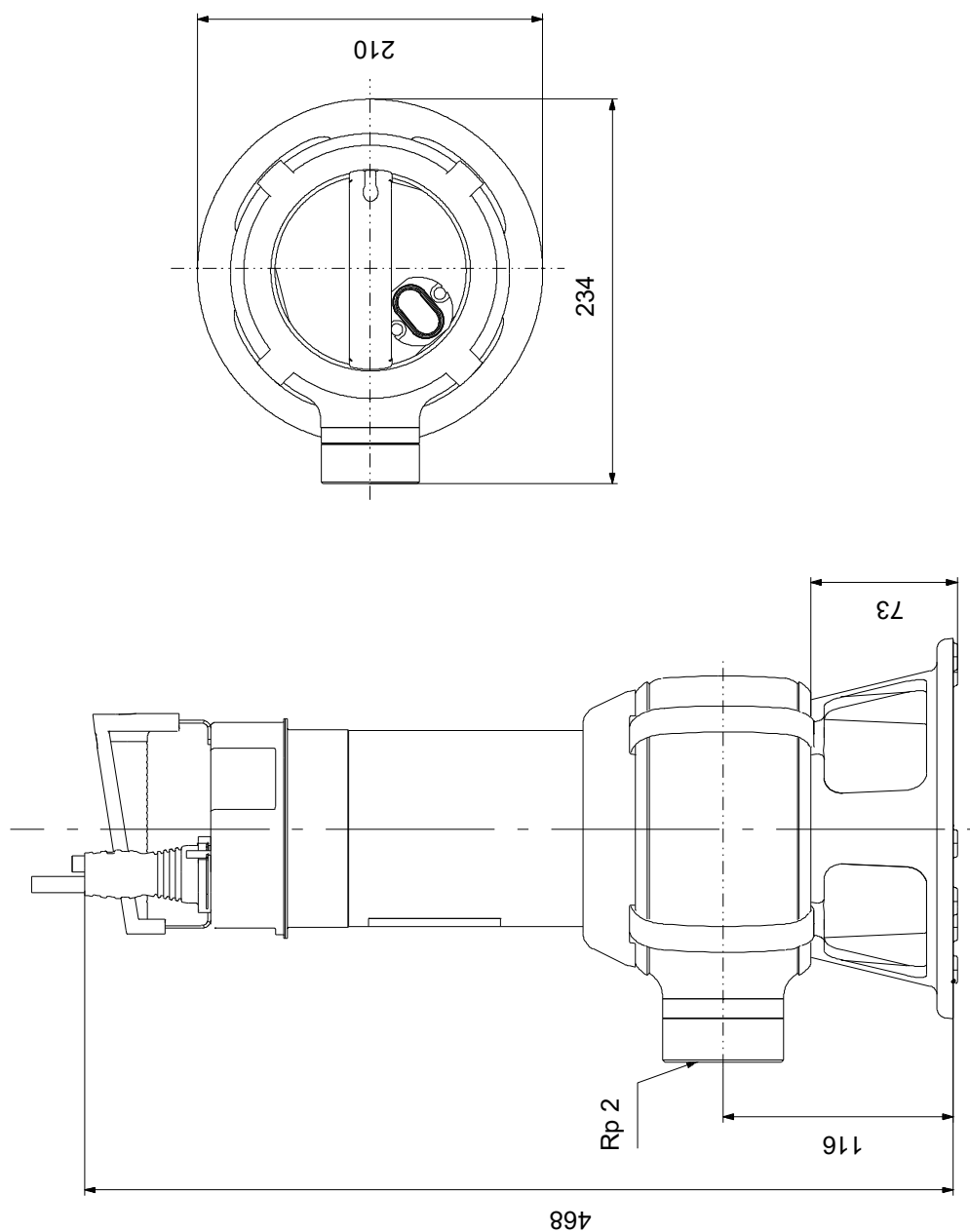
96468352 UNILIFT AP50B.50.11.A1V 50 Hz



Description	Value
General information:	
Product name:	UNILIFT AP50B.50.11.A1V
Product No:	96468352
EAN number:	5700394943390
Technical:	
Actual calculated flow:	2.2 l/s
Maximum flow:	7.78 l/s
Resulting head of the pump:	10.89 m
Maximum head:	14 m
Type of impeller:	VORTEX
Max. Particle:	50 mm
Approvals:	CE,RCM,VDE,LGABG,EAC,MORO,MORO,UKCA,SEPRO
Rated speed:	2760 rpm
Materials:	
Pump housing:	Stainless steel
Pump housing:	EN 1.4301
Pump housing:	AISI 304
Impeller:	Stainless steel
Impeller:	EN 1.4301
Impeller:	AISI 304
Installation:	
Range of ambient temperature:	0 .. 40 °C
Type of connection:	Rp
Size of connection:	2 inch
Maximum installation depth:	7 m
Inst dry/wet:	S
Installation:	horizontal or vertical
Auto-coupling:	Y
Place of installation:	Indoor/outdoor
Liquid:	
Pumped liquid:	Any Newtonian liquid
Liquid temperature range:	0 .. 40 °C
Selected liquid temperature:	20 °C
Density:	998.2 kg/m ³
Electrical data:	
Power input P1:	1.75 kW
Motor type 1-phase:	PSC
Rated power - P2:	1.21 kW
Mains frequency:	50 Hz
Rated voltage:	1 x 230 V
Rated current:	8 A
Cos phi - power factor:	0.95
Rated speed:	2760 rpm
Capacitor size - run:	20 µF/400 V
Enclosure class (IEC 34-5):	IP68
Insulation class (IEC 85):	F
Built-in motor protection:	CONTACT
Thermal protec:	internal
Length of power cable:	10 m
Type of cable plug:	SCHUKO
Controls:	
Level switch:	float switch
Others:	
Net weight:	11.7 kg
Gross weight:	13.1 kg
Danish VVS No.:	391272342
Swedish RSK No.:	5886035
Environmental approvals:	WEEE



96468352 UNILIFT AP50B.50.11.A1V 50 Hz



Note! All units are in [mm] unless others are stated.
Disclaimer: This simplified dimensional drawing does not show all details.

