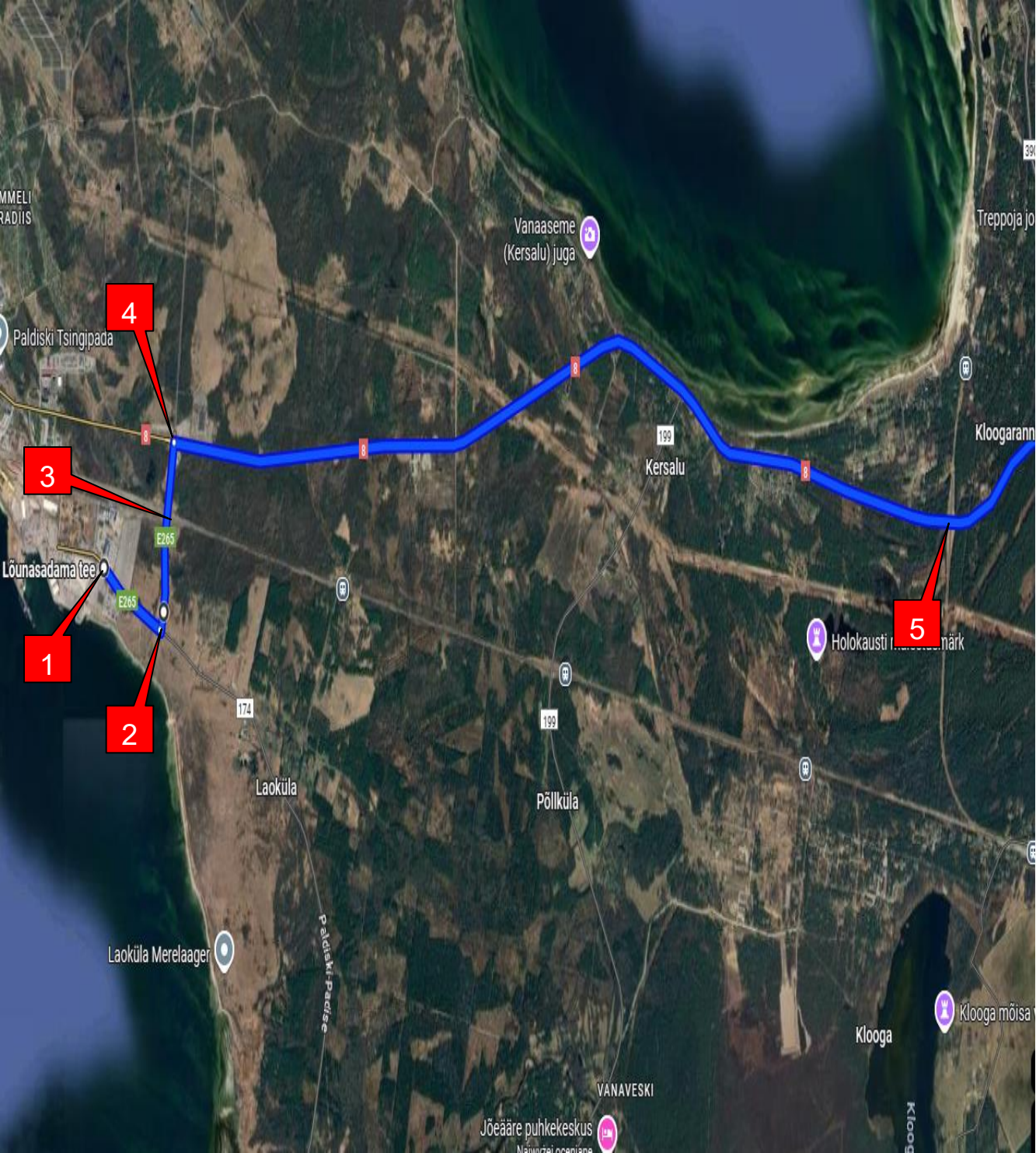
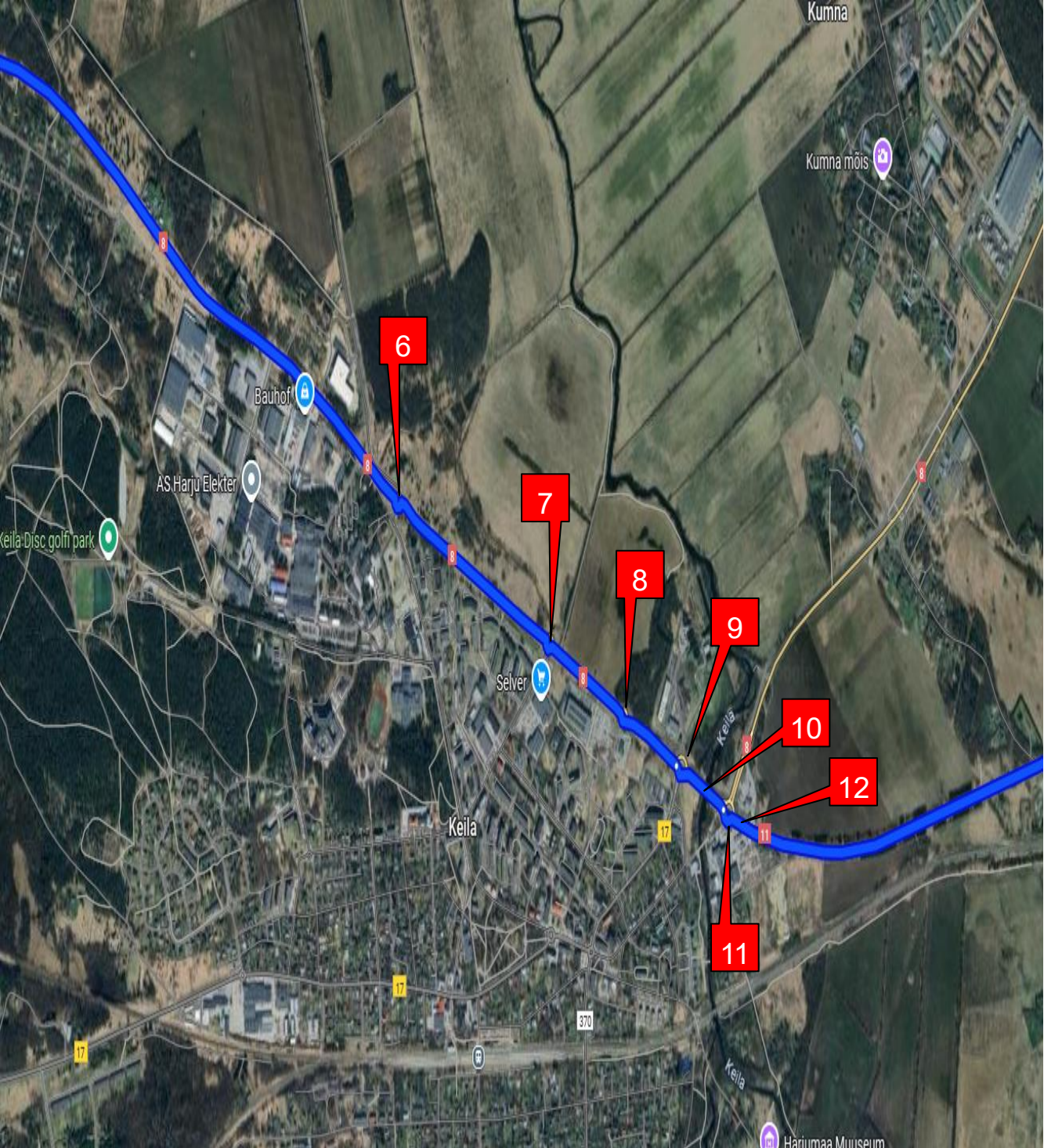


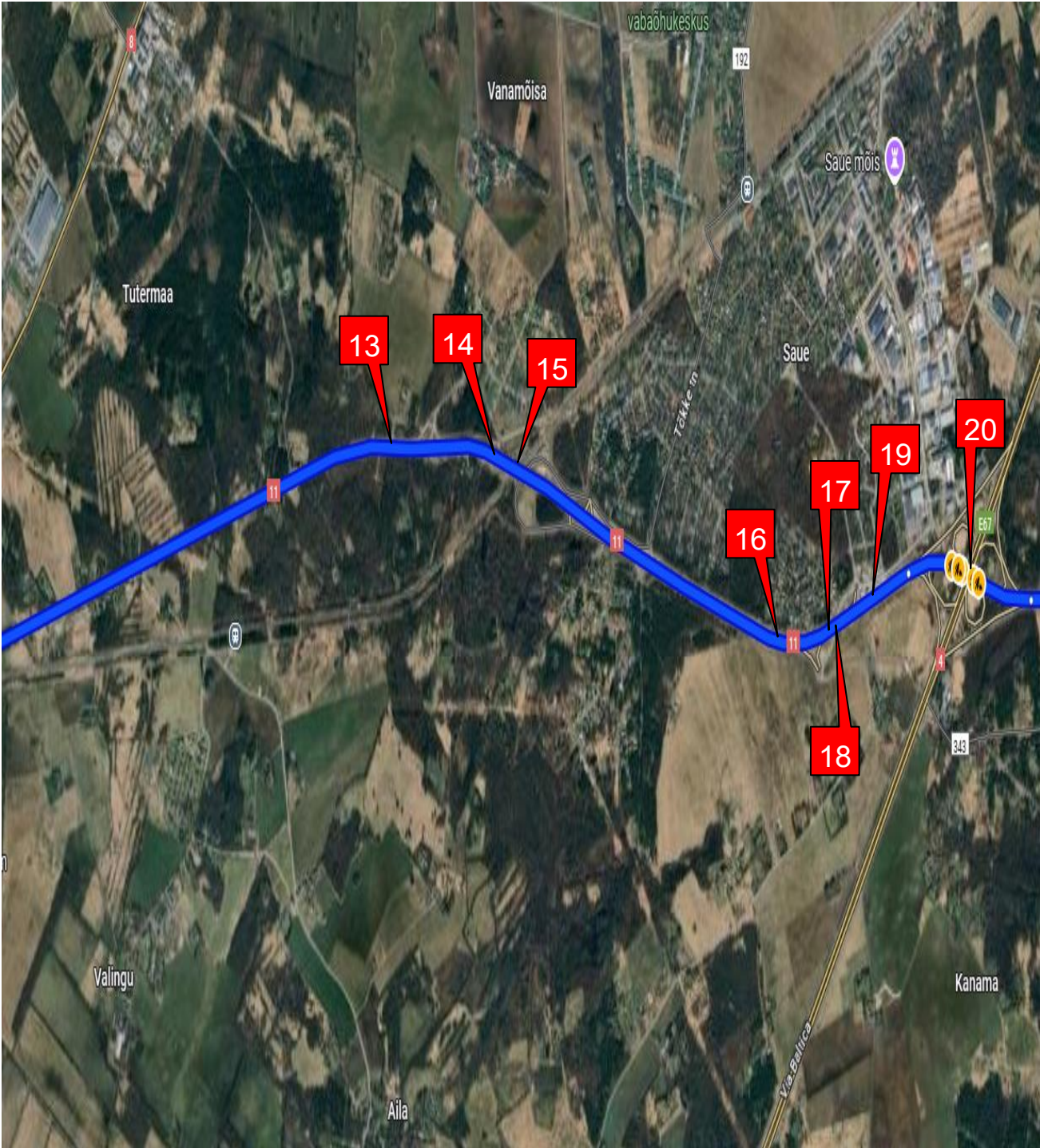
Detail map 1



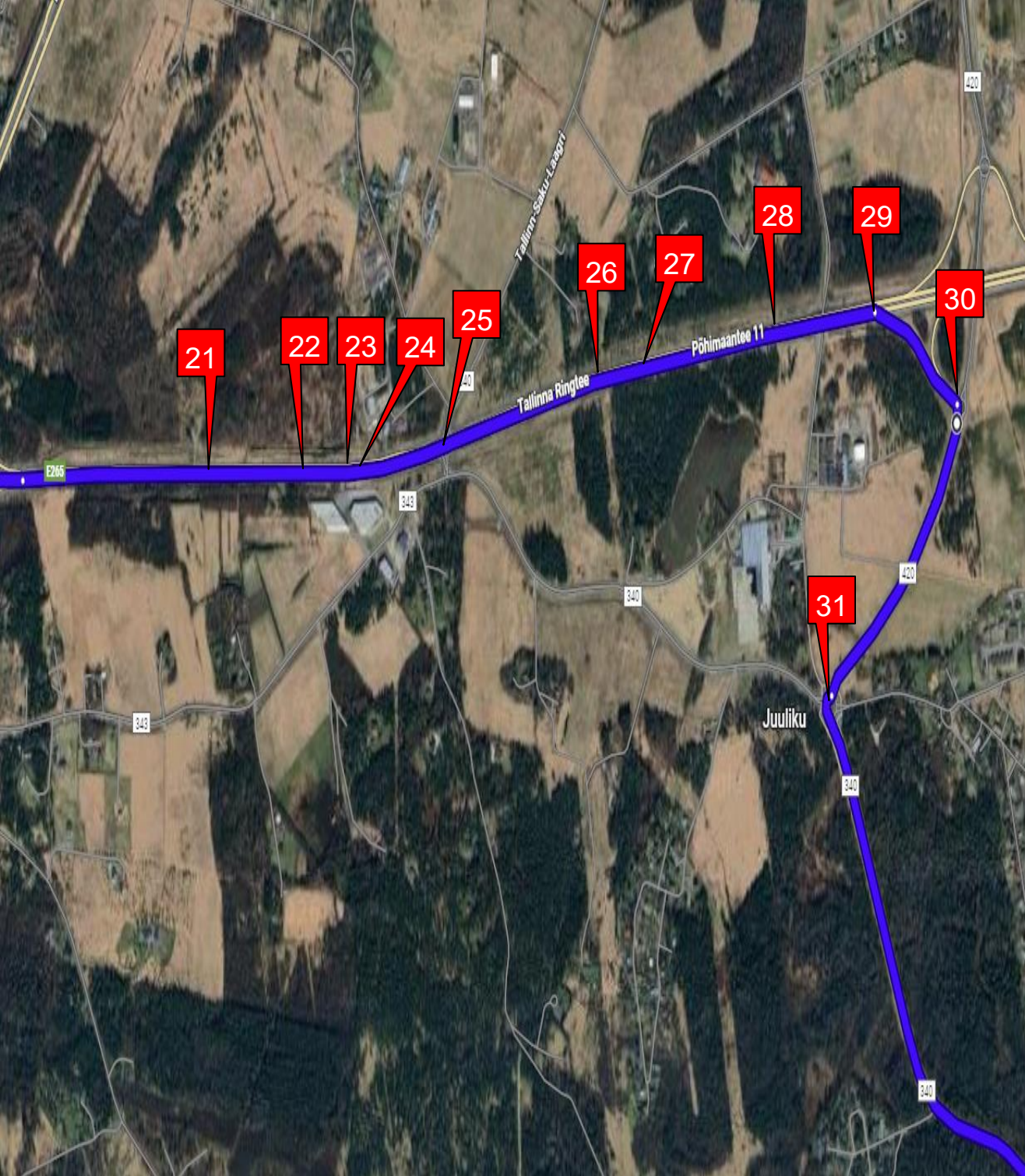
Detail map 2



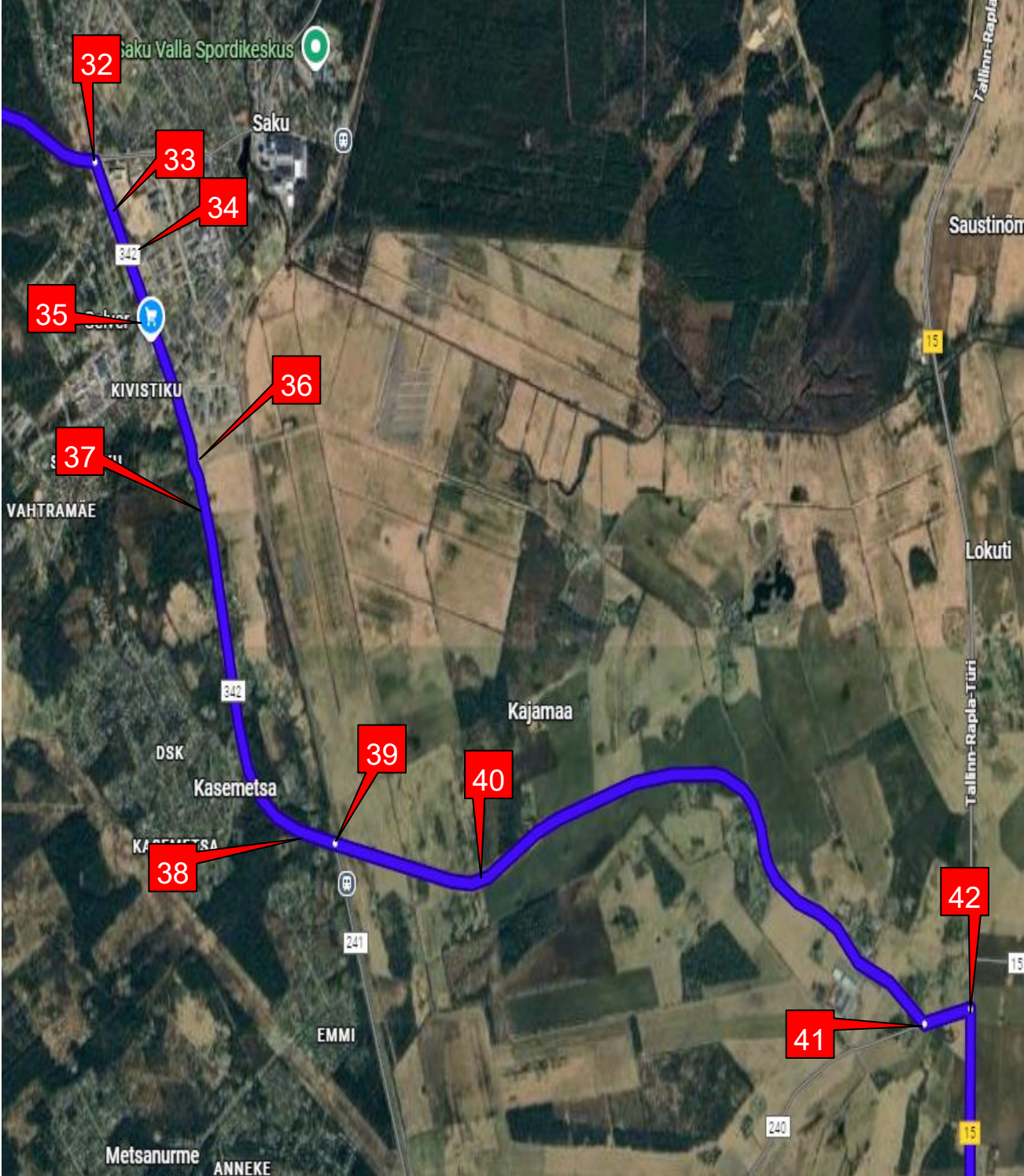
Detail map 3



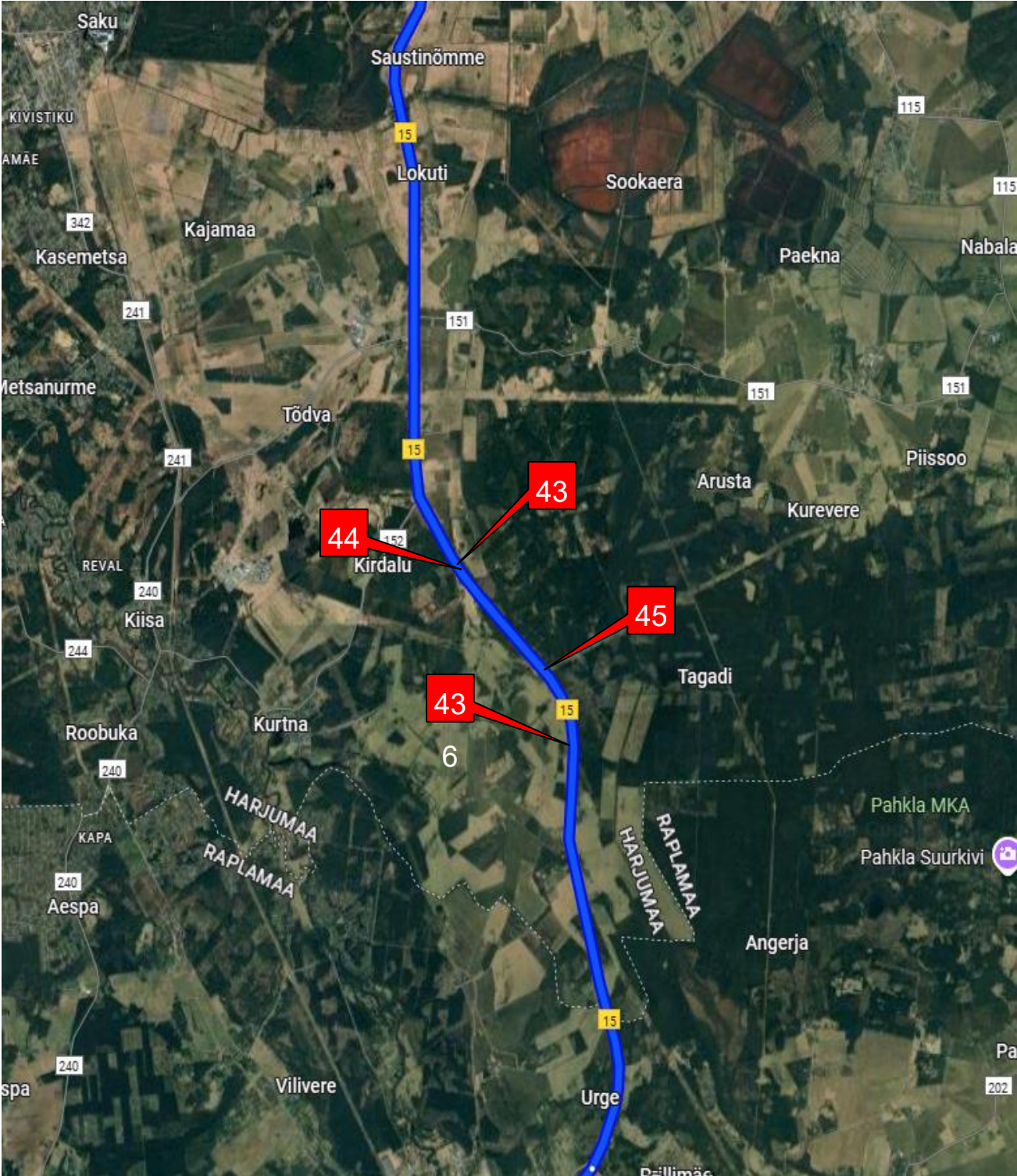
Detail map 4



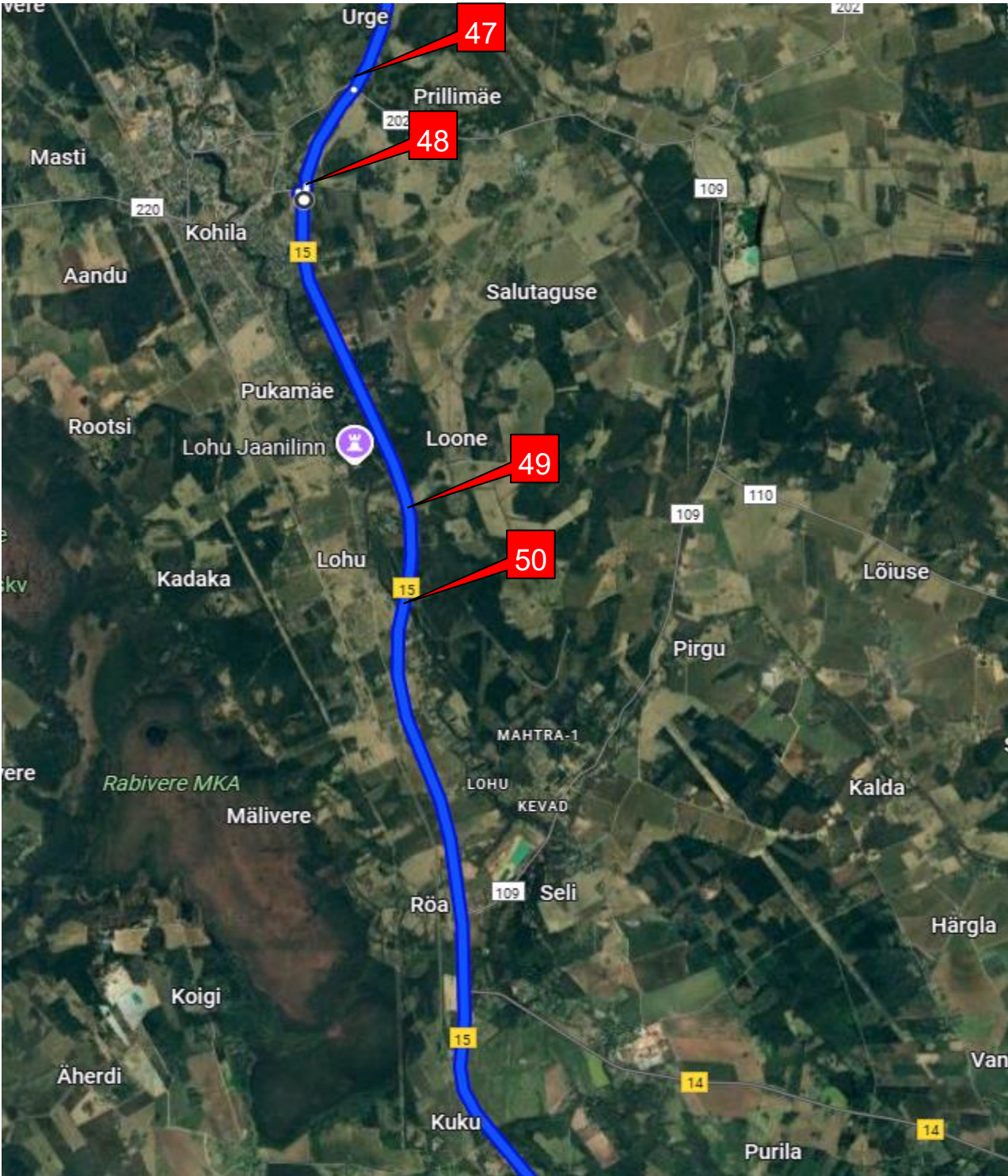
Detail map 5



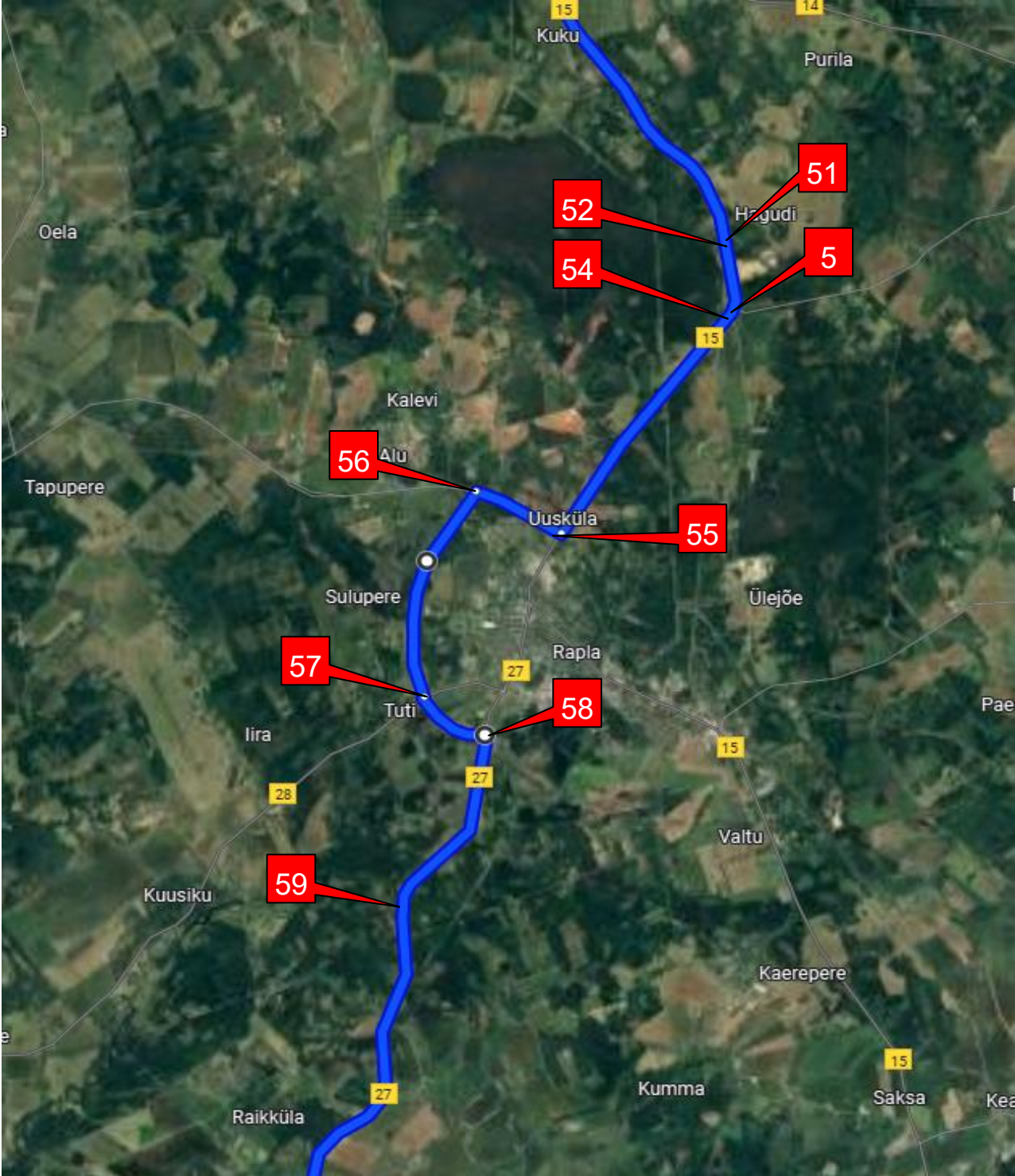
Detail map 6



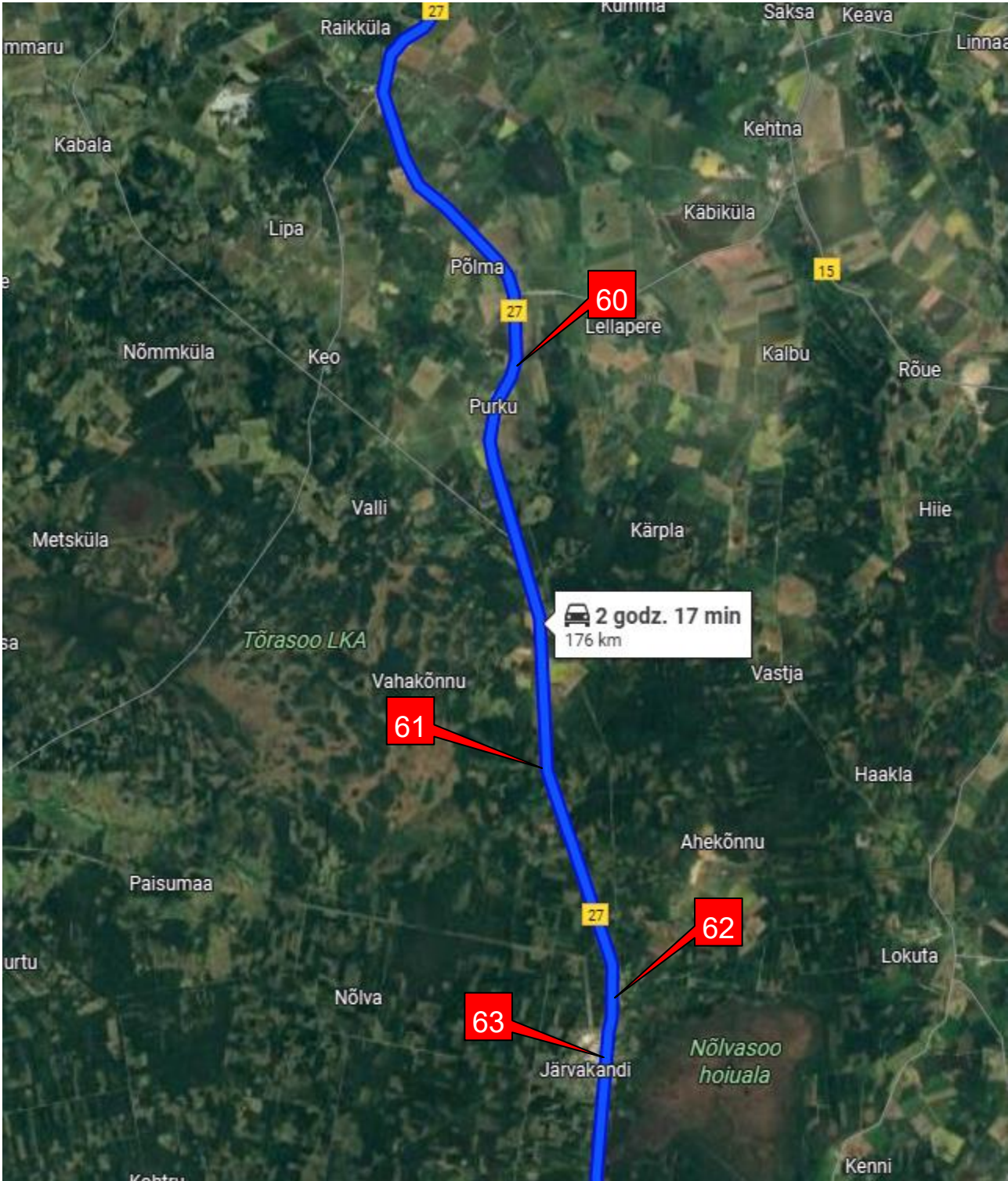
Detail map 7



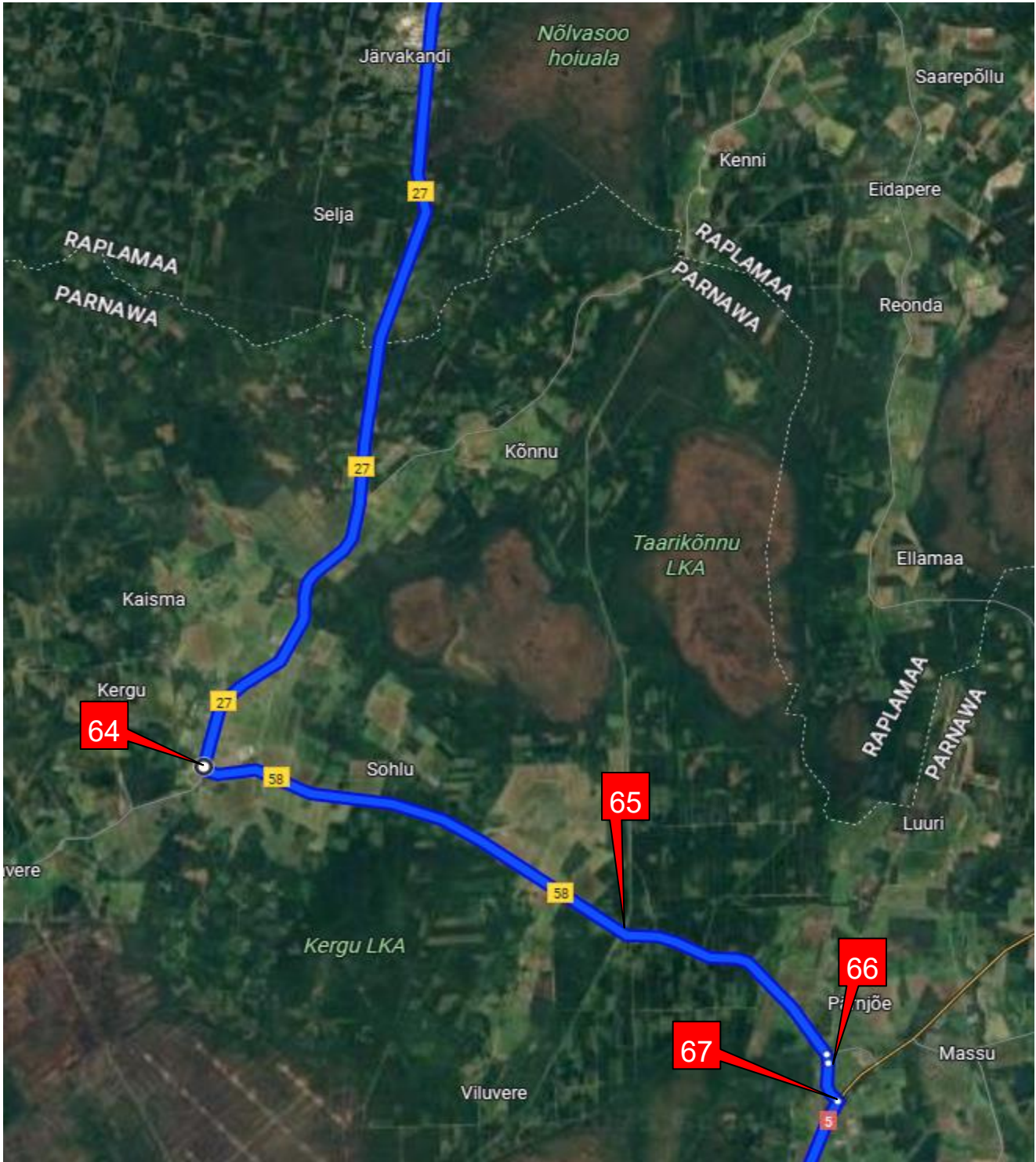
Detail map 8



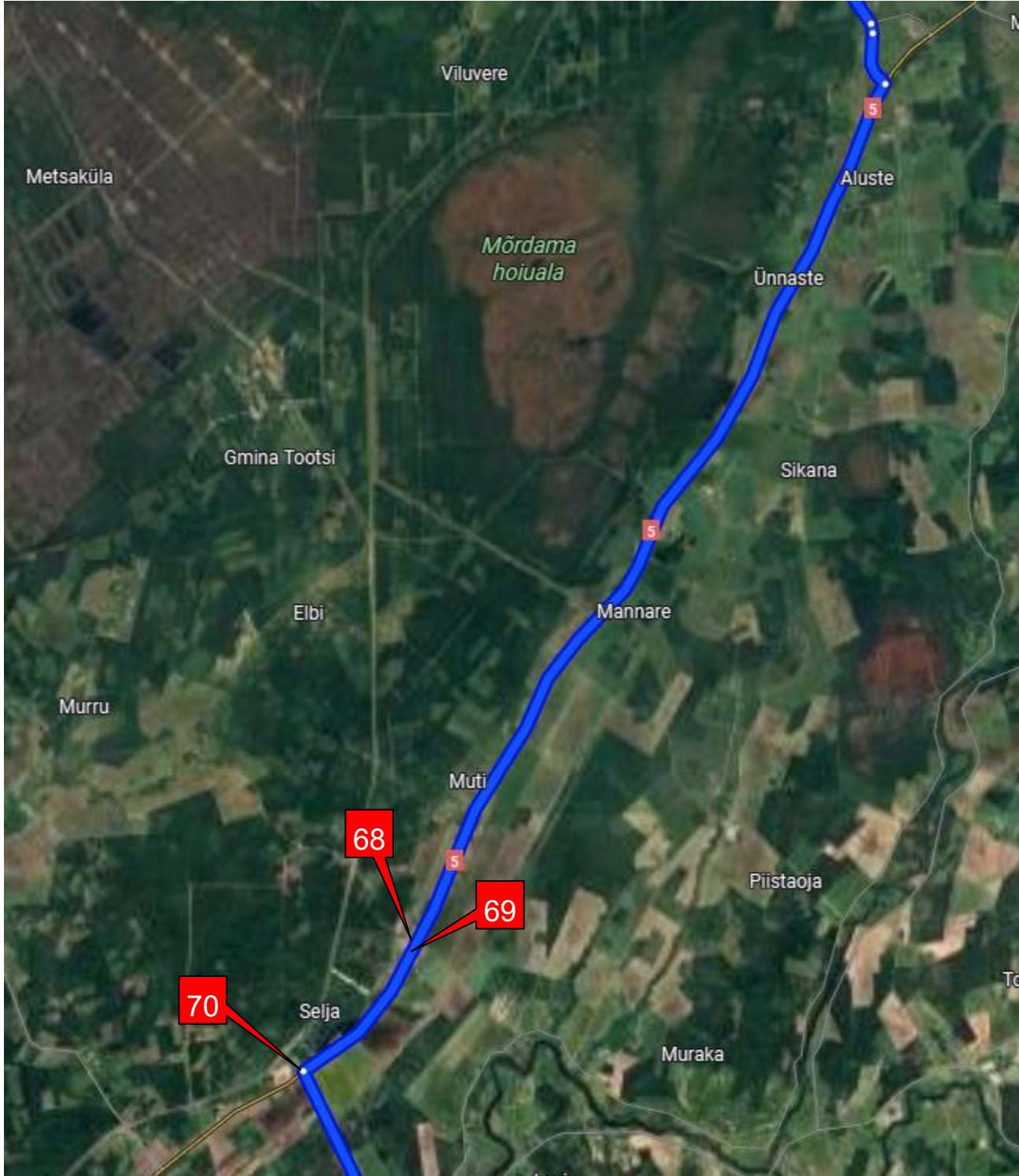
Detail map 9



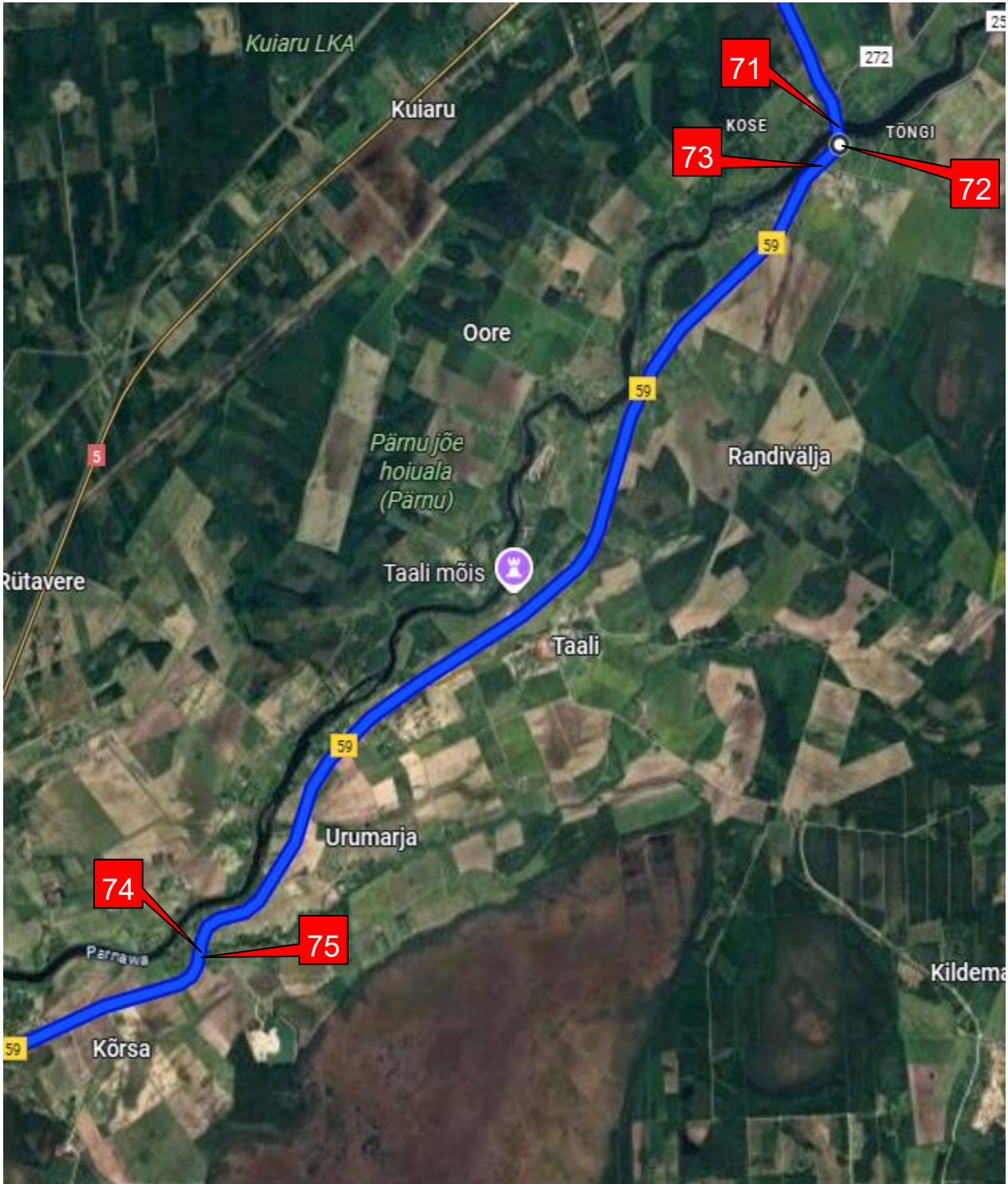
Detail map 10



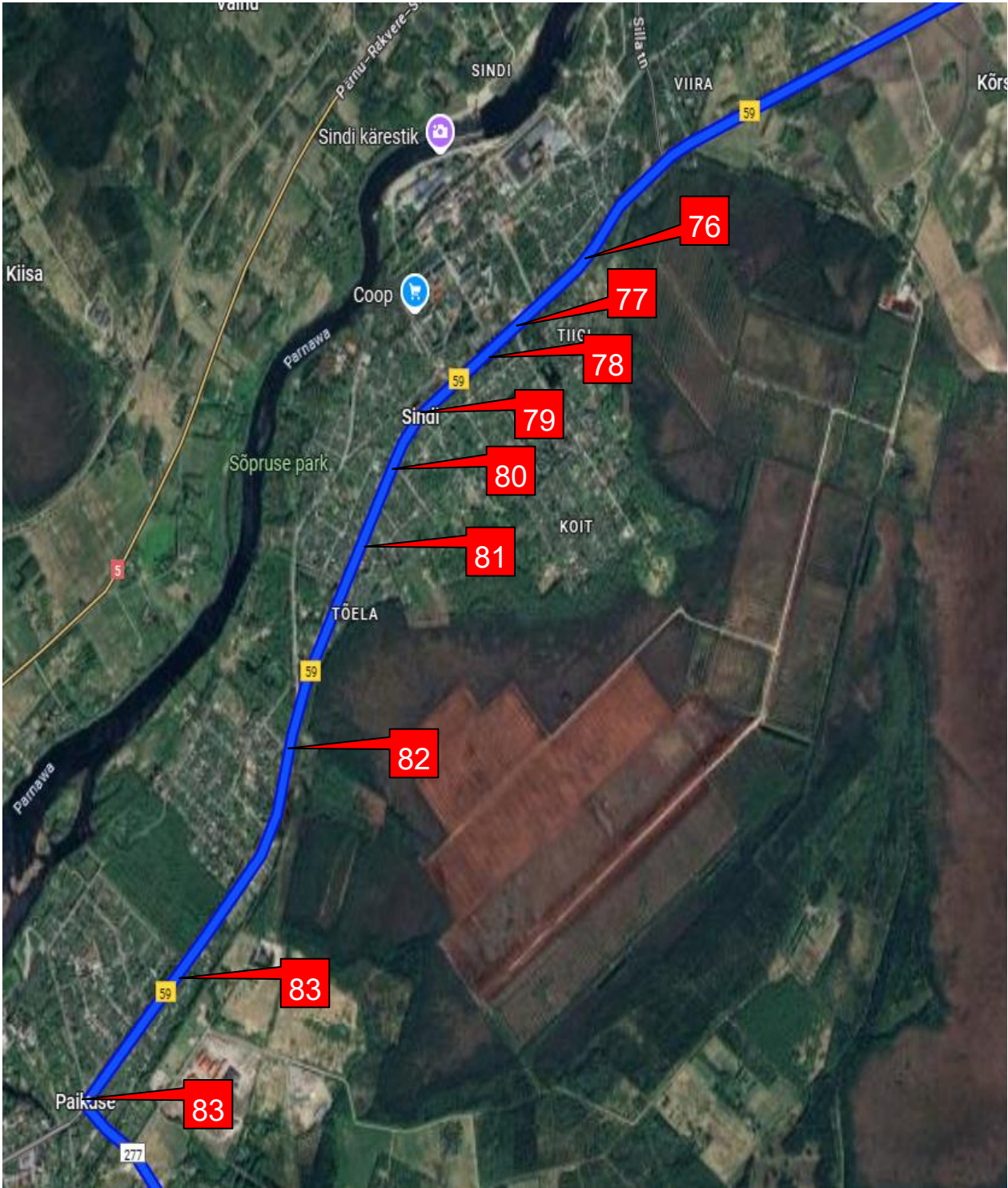
Detail map 11



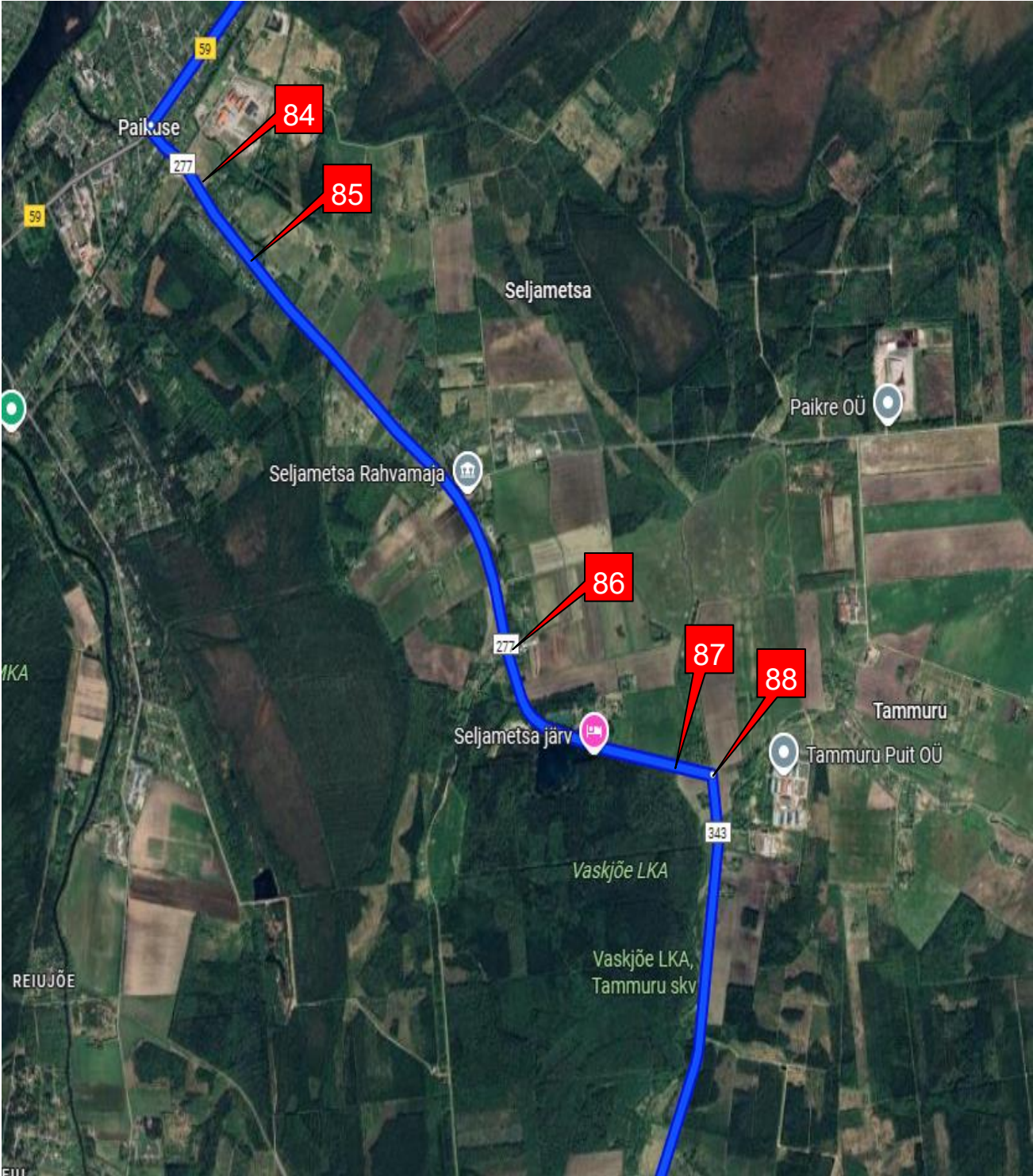
Detail map 12



Detail map 13



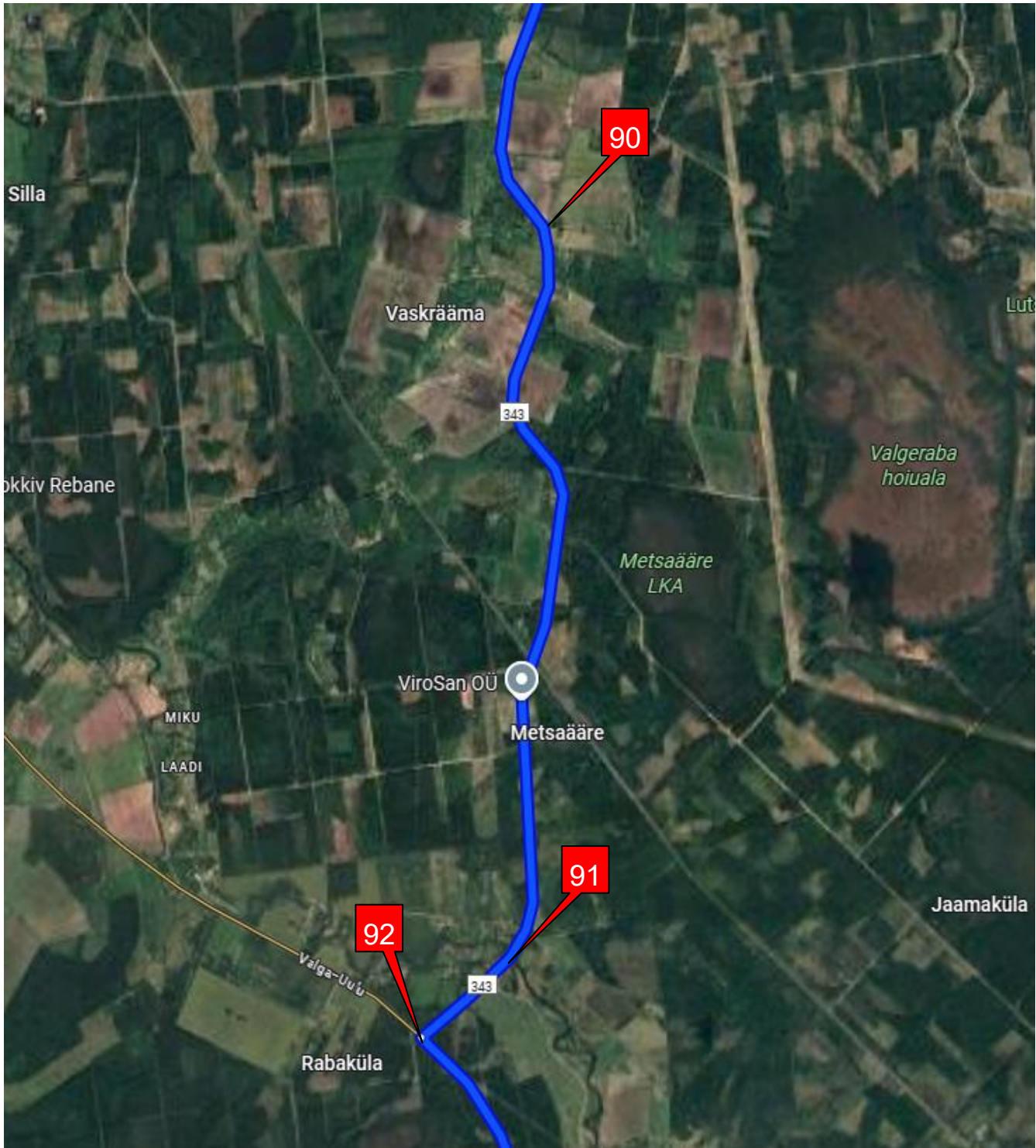
Detail map 14



Project no. / Ref. : 360	Dated: 13/01/2026	Page number 31 of 189
Route: EE Paldiski – LV Smiltene		

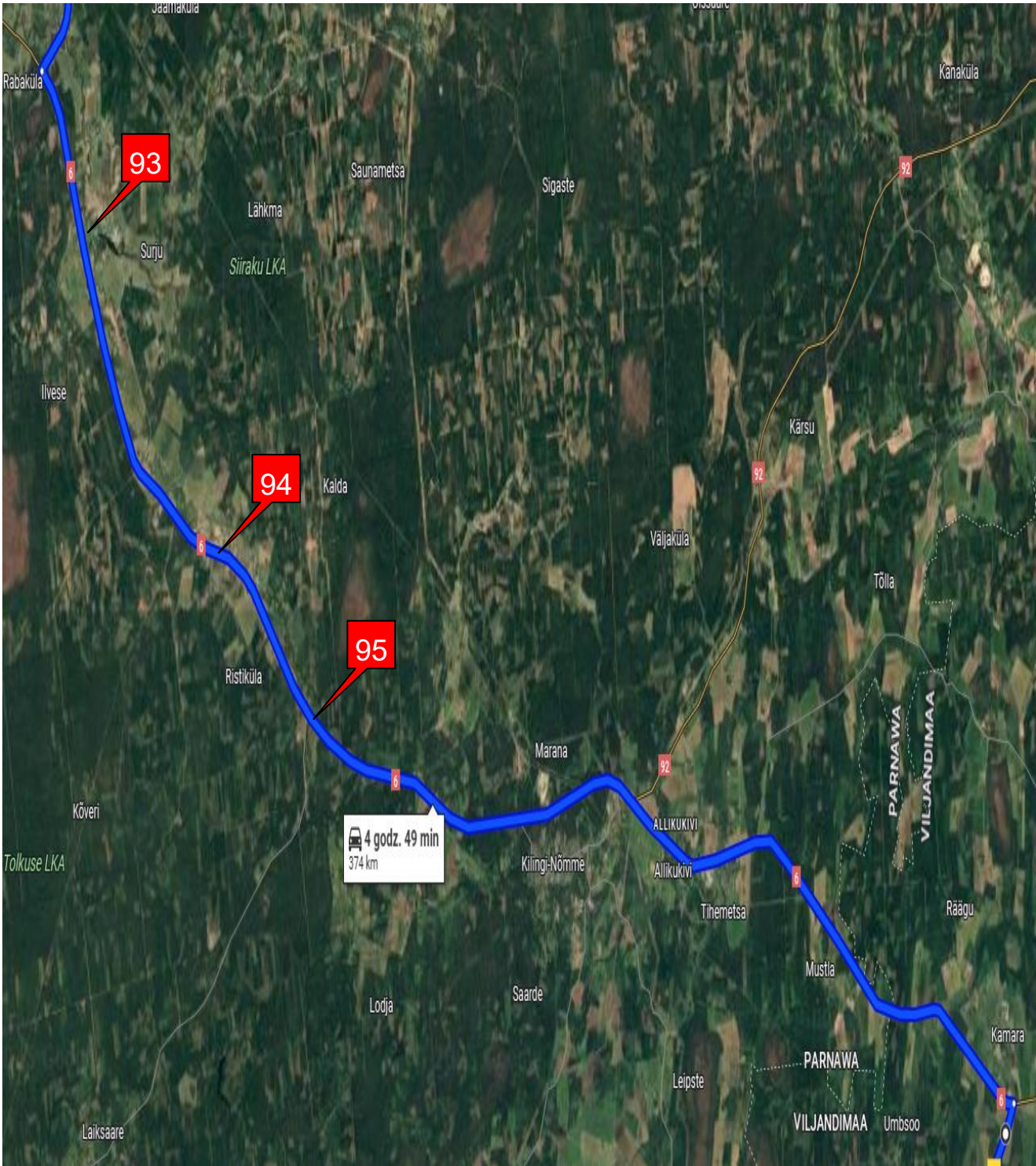


Detail map 15



Printed version is uncontrolled. Controlled version only exists in the electronic database

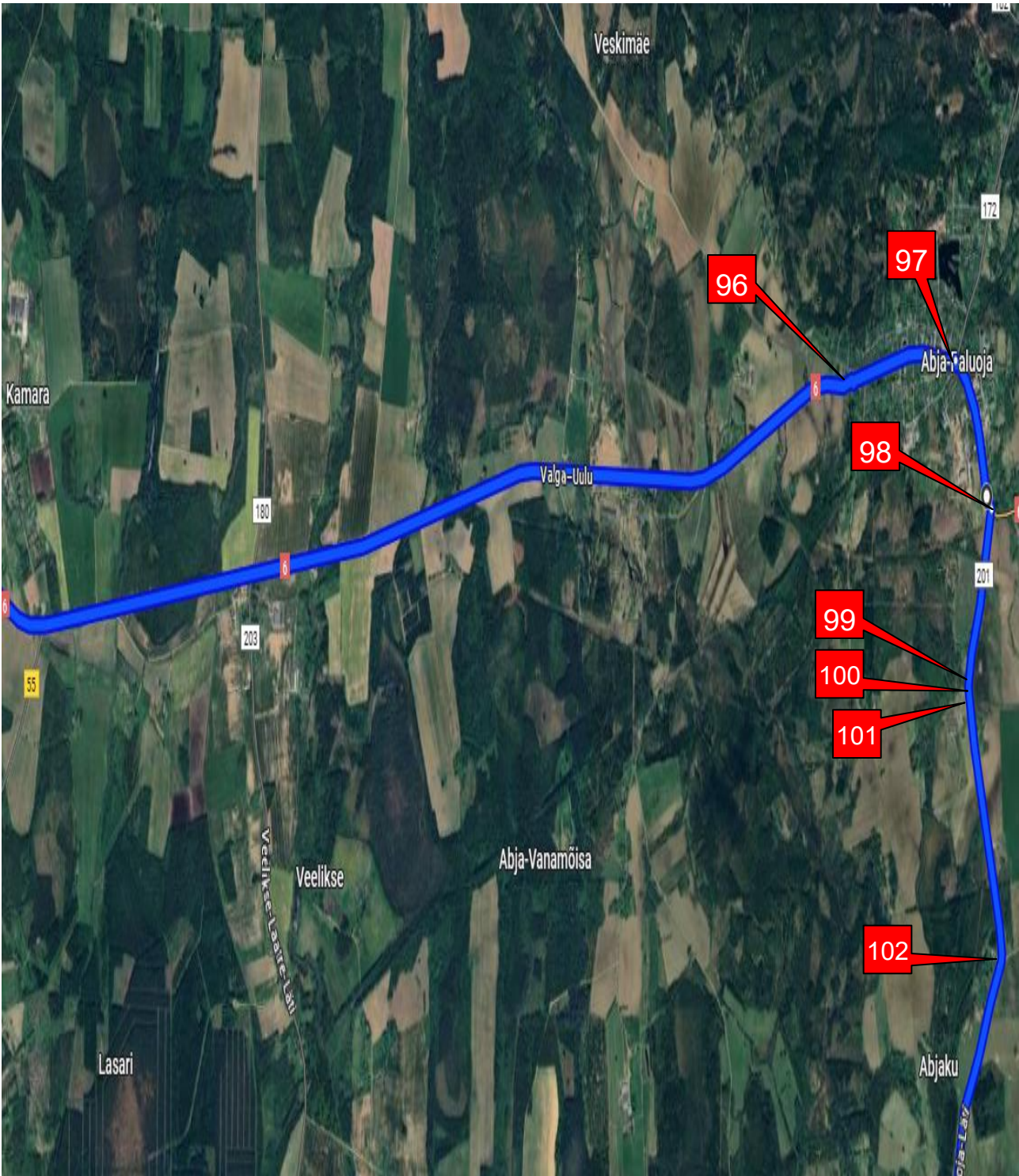
Detail map 16



Project no. / Ref. : 360	Dated: 13/01/2026	Page numer 33 of 189
Route: EE Paldiski – LV Smiltene		

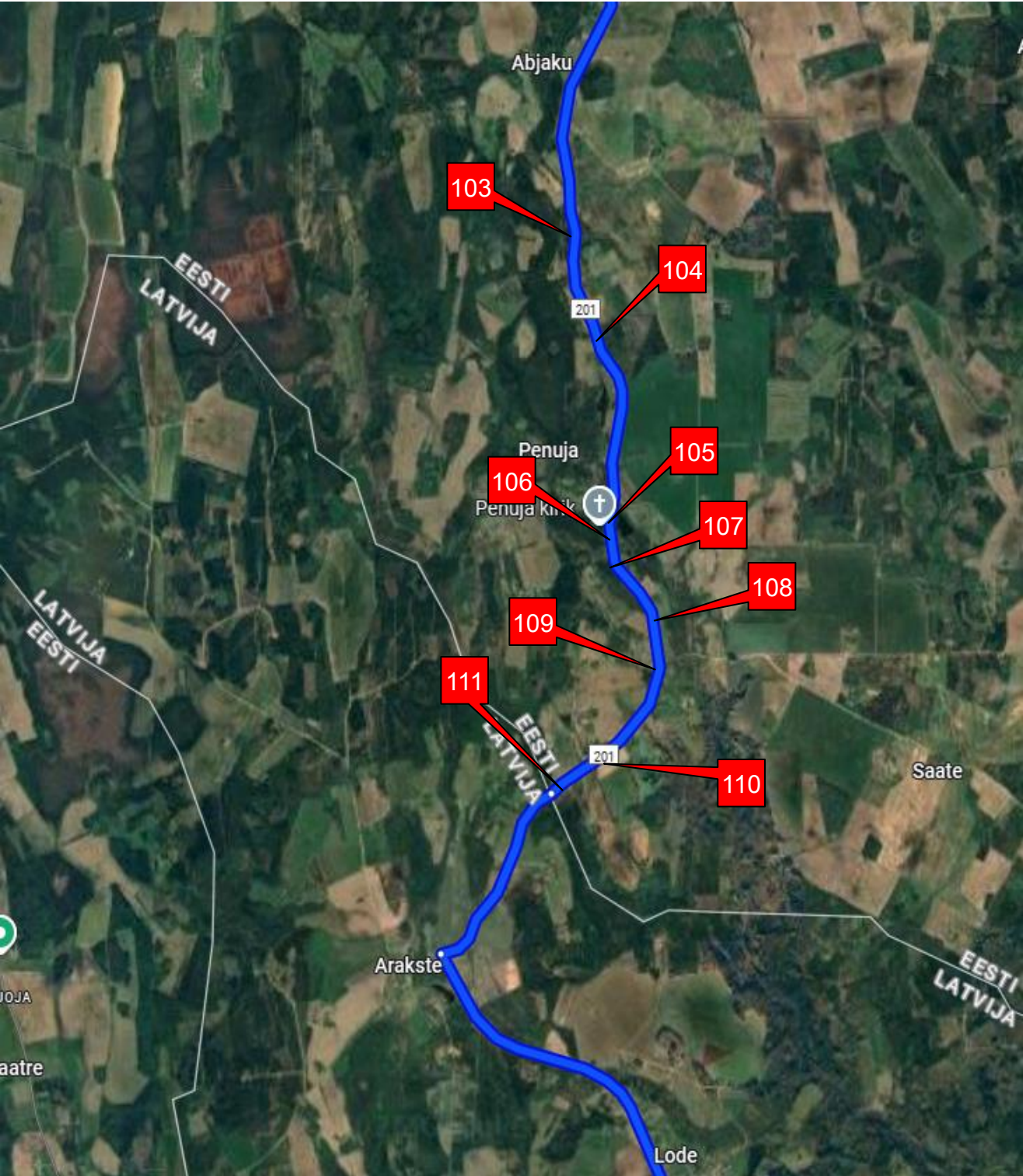


Detail map 17



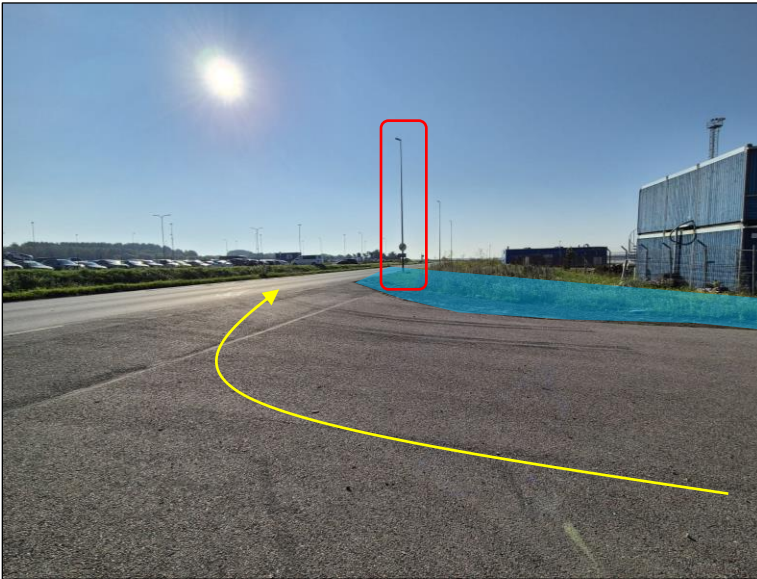
Printed version is uncontrolled. Controlled version only exists in the electronic database

Detail map 18



7. TRANSPORT SURVEY

Location 1. Exit gate from the port to road 180. Paldiski.



Actions:

- Area marked in blue (approximately 80m²) to be hardened by protective composite mats (load-bearing capacity 12t/axle);
- 1 lighting pole must be dismantled

Google maps coordinates: [59.334127, 24.091777](https://maps.app.goo.gl/enTkGbrXYQb7qXMf7) <https://maps.app.goo.gl/enTkGbrXYQb7qXMf7>

Location 1-2. Exit gate from the port to road 180. Paldiski.



Actions:

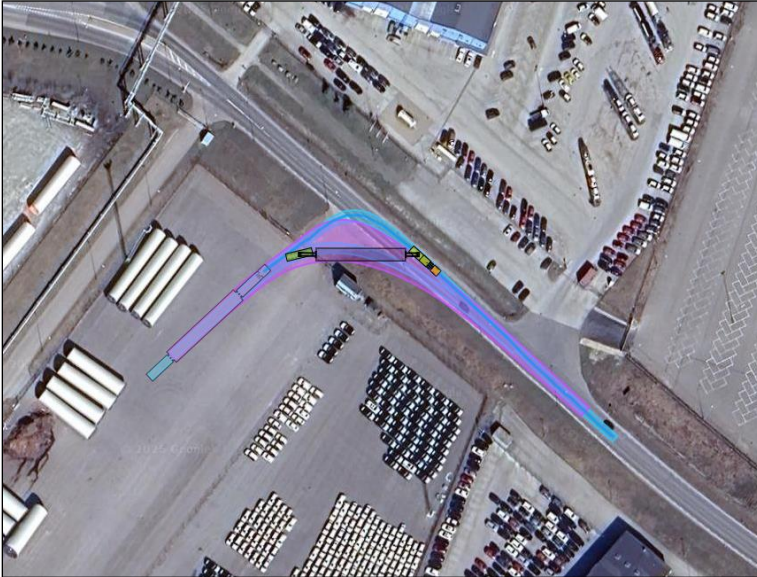
- Ref. to Location 1.

Google maps coordinates: [59.334127, 24.091777](https://maps.app.goo.gl/enTkGbrXYQb7qXMf7) <https://maps.app.goo.gl/enTkGbrXYQb7qXMf7>

Project no. / Ref. : 360	Dated: 13/01/2026	Page numer 44 of 189
Route: EE Paldiski – LV Smiltene		

7. TRANSPORT SURVEY

Location 1-3. Exit gate from the port to road 180. Paldiski.



Actions:

- Ref. to Location 1.

Google maps coordinates: [59.334127, 24.091777](https://maps.app.goo.gl/enTkGbrXYQb7qXMf7) <https://maps.app.goo.gl/enTkGbrXYQb7qXMf7>

Location 2. Intersection of Road 180 and Road 174. Paldiski.



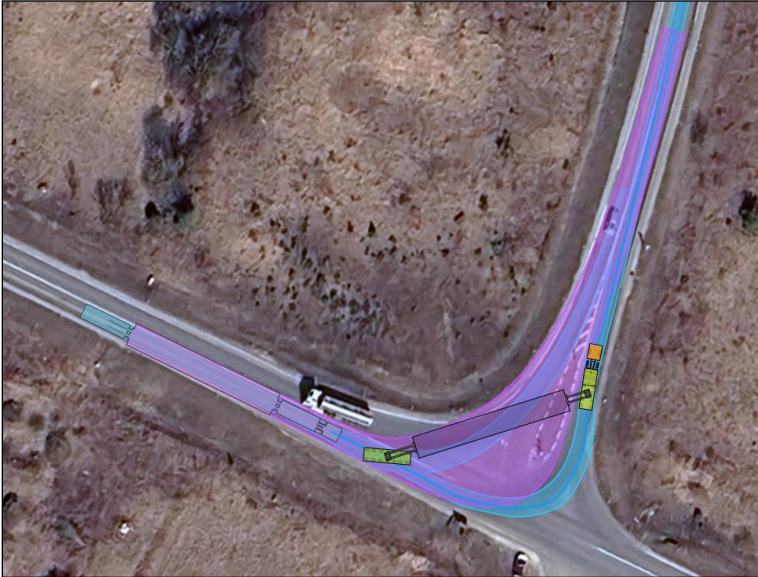
Actions:

- 2 road signs are removable.

Google maps coordinates: [59.331198, 24.101951](https://maps.app.goo.gl/zSsFra9vwLNVmJLu8) <https://maps.app.goo.gl/zSsFra9vwLNVmJLu8>

7. TRANSPORT SURVEY

Location 2. Intersection of Road 180 and Road 174. Paldiski.



Actions:

- Ref. to Location 2.

Google maps coordinates: [59.331198, 24.101951](https://maps.app.goo.gl/zSsFra9vwLNVmJLu8) <https://maps.app.goo.gl/zSsFra9vwLNVmJLu8>

Location 3. Road 174. Paldiski.



Actions:

- Railway crossing.
- It may be necessary to arrange passage with the administrator.

Google maps coordinates: [59.336588, 24.103084](https://maps.app.goo.gl/Zjmg7ekhNDdq349u9) <https://maps.app.goo.gl/Zjmg7ekhNDdq349u9>

7. TRANSPORT SURVEY

Location 4. Intersection of Road 174 and Road 8. Paldiski.

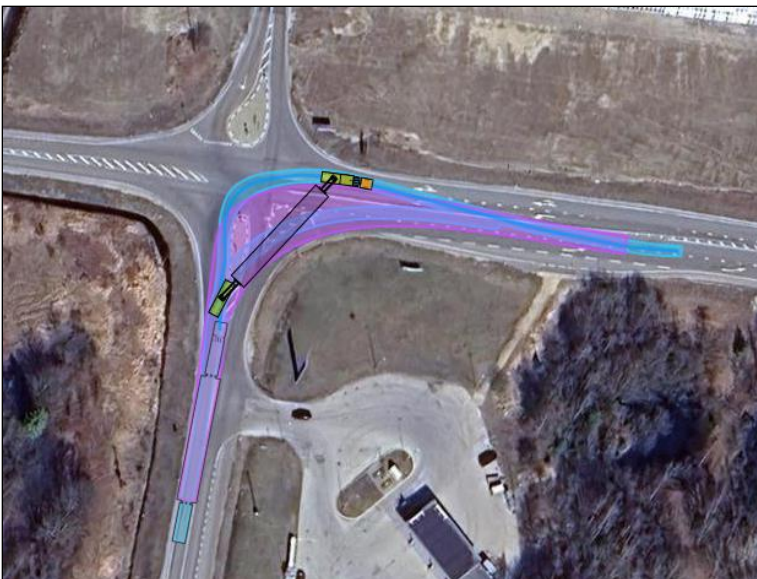


Actions:

- 2 road signs are removable.

Google maps coordinates: [59.340213, 24.104292](https://maps.app.goo.gl/cGFDWkQhZh5DbAdu6) <https://maps.app.goo.gl/cGFDWkQhZh5DbAdu6>

Location 4-2. Intersection of Road 174 and Road 8. Paldiski.



Actions:

- Ref. to Location 4.

Google maps coordinates: [59.340213, 24.104292](https://maps.app.goo.gl/cGFDWkQhZh5DbAdu6) <https://maps.app.goo.gl/cGFDWkQhZh5DbAdu6>



7. TRANSPORT SURVEY

Location 5. Road 8.

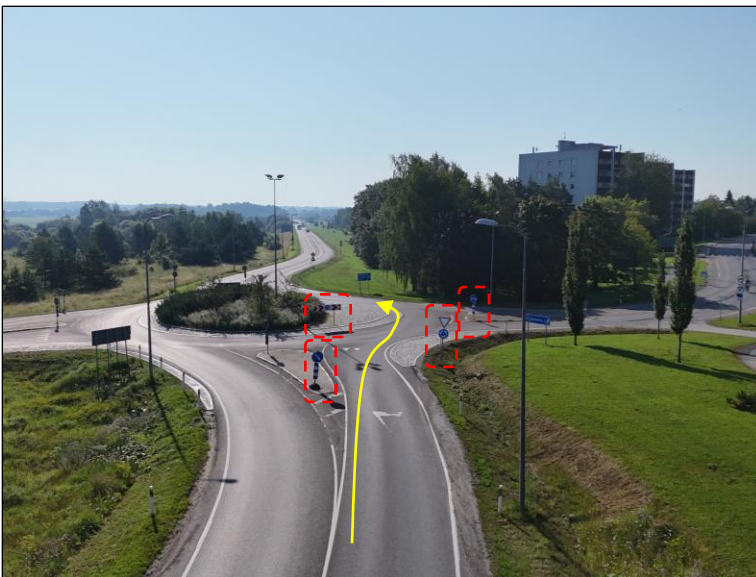


Actions:

- Railway crossing.
- It may be necessary to arrange passage with the administrator.

Google maps coordinates: [59.336390, 24.243272 https://maps.app.goo.gl/Cs6rvX359ix4qbt3A](https://maps.app.goo.gl/Cs6rvX359ix4qbt3A)

Location 6. Road 8. Keila.



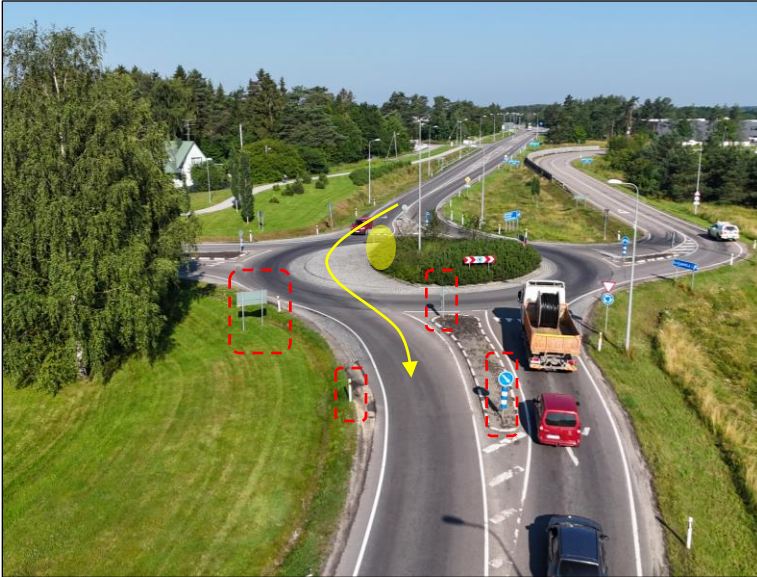
Actions:

- 7 road signs are removable.
- Plastic posts are removable.
- Adapt vegetation on roundabout

Google maps coordinates: [59.317360, 24.410713 https://maps.app.goo.gl/ooWab3BBXdixQWHh6](https://maps.app.goo.gl/ooWab3BBXdixQWHh6)

7. TRANSPORT SURVEY

Location 6-2. Road 8. Keila.



Actions:

- Ref. to Location 6.

Google maps coordinates: [59.317360, 24.410713](https://maps.app.goo.gl/ooWab3BBXdixQWHh6) <https://maps.app.goo.gl/ooWab3BBXdixQWHh6>

Location 6-3. Road 8. Keila.



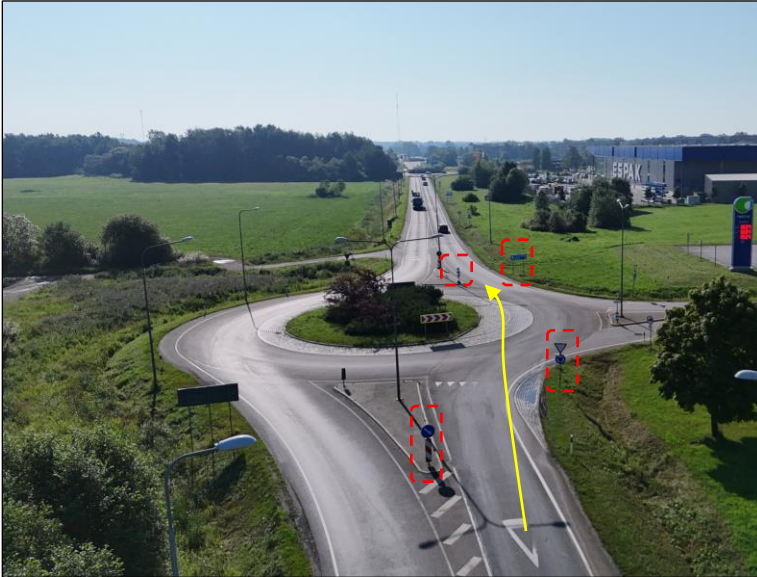
Actions:

- Ref. to Location 6.

Google maps coordinates: [59.317360, 24.410713](https://maps.app.goo.gl/ooWab3BBXdixQWHh6) <https://maps.app.goo.gl/ooWab3BBXdixQWHh6>

7. TRANSPORT SURVEY

Location 7. Road 8. Keila.



Actions:

- 4 road signs are removable.

Google maps coordinates: [59.314444, 24.422440 https://maps.app.goo.gl/D3dpAfEYAPwgNwPz5](https://maps.app.goo.gl/D3dpAfEYAPwgNwPz5)

Location 7-2. Road 8. Keila.



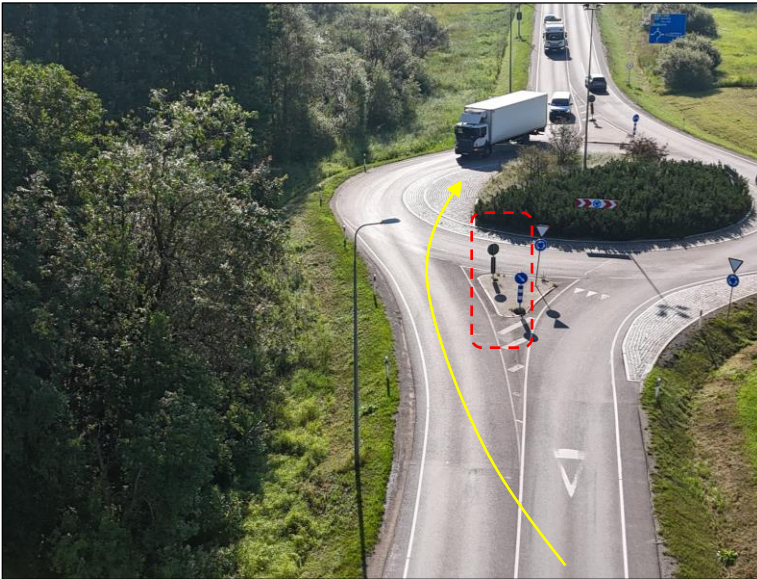
Actions:

- Ref. to Location 7.

Google maps coordinates: [59.314444, 24.422440 https://maps.app.goo.gl/D3dpAfEYAPwgNwPz5](https://maps.app.goo.gl/D3dpAfEYAPwgNwPz5)

7. TRANSPORT SURVEY

Location 8. Road 8. Keila.



Actions:

- Movement in the opposite traffic direction.
- 3 road signs are removable.
- 1 lighting pole must be dismantled.
- The need to construct a temporary paved widening on the outer side of the road curve. 50 m².

Google maps coordinates: [59.313094, 24.428463 https://maps.app.goo.gl/KmRLzLgejUh1zfdq8](https://maps.app.goo.gl/KmRLzLgejUh1zfdq8)

Location 8-2. Road 8. Keila.



Actions:

- Ref. to Location 8.

Google maps coordinates: [59.313094, 24.428463 https://maps.app.goo.gl/KmRLzLgejUh1zfdq8](https://maps.app.goo.gl/KmRLzLgejUh1zfdq8)

7. TRANSPORT SURVEY

Location 8-3. Road 8. Keila.

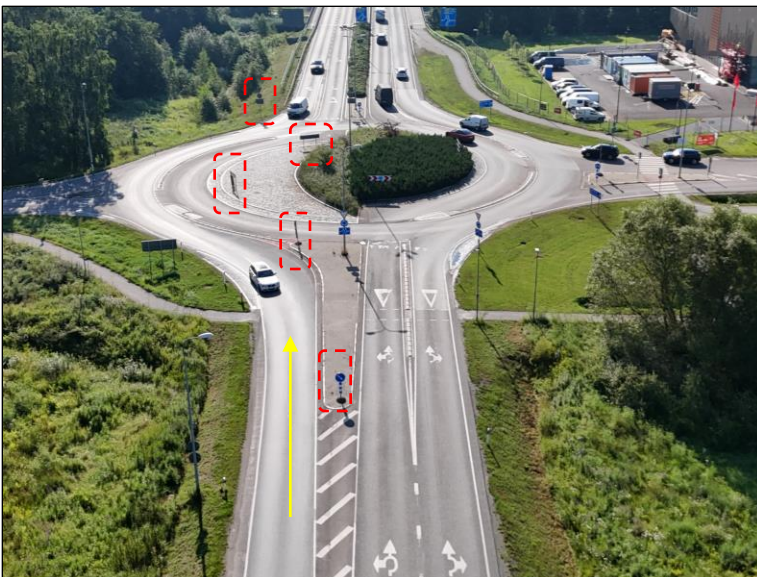


Actions:

- Ref. to Location 8.

Google maps coordinates: [59.313094, 24.428463 https://maps.app.goo.gl/KmRLzLgeiUh1zfdq8](https://maps.app.goo.gl/KmRLzLgeiUh1zfdq8)

Location 9. Road 8. Keila.



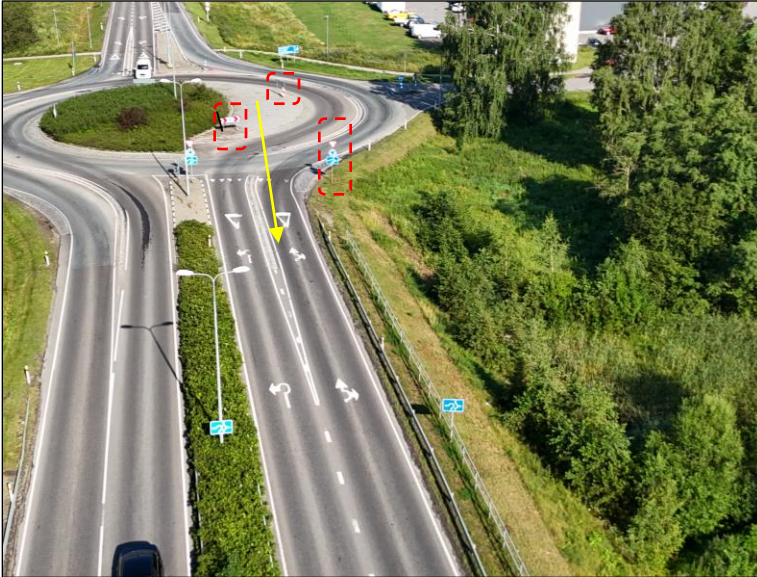
Actions:

- 5 road signs are removable.
- Movement in the opposite traffic direction.

Google maps coordinates: [59.312091, 24.432922 https://maps.app.goo.gl/EHJsfK46RfcmqrCRA](https://maps.app.goo.gl/EHJsfK46RfcmqrCRA)

7. TRANSPORT SURVEY

Location 9-2. Road 8. Keila.



Actions:

- Ref. to Location 9.

Google maps coordinates: [59.312091, 24.432922](https://maps.app.goo.gl/EHJsFK46RfcmqrCRA) <https://maps.app.goo.gl/EHJsFK46RfcmqrCRA>

Location 9-3. Road 8. Keila.



Actions:

- Ref. to Location 9.

Google maps coordinates: [59.312091, 24.432922](https://maps.app.goo.gl/EHJsFK46RfcmqrCRA) <https://maps.app.goo.gl/EHJsFK46RfcmqrCRA>



7. TRANSPORT SURVEY

Location 11. Road 8. Keila.



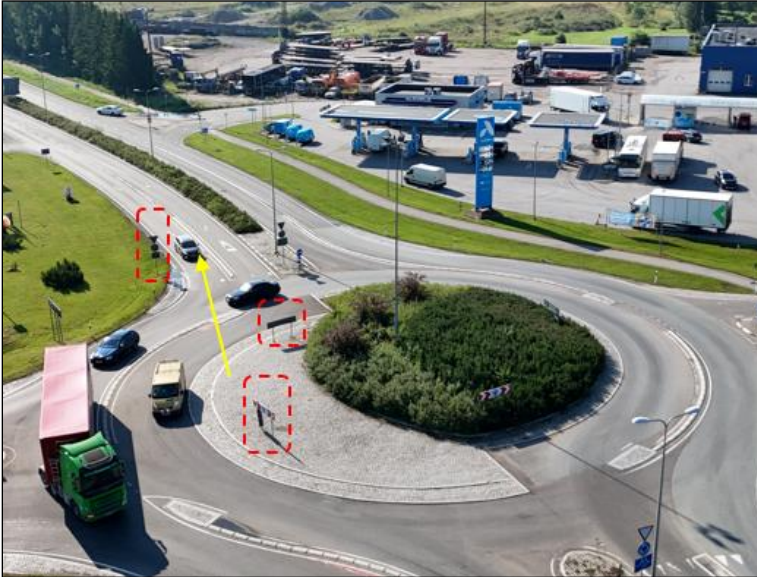
Actions:

- 3 road signs are removable.
- The tarsa still takes place in the opposite lane.



7. TRANSPORT SURVEY

Location 11-2. Road 8. Keila.

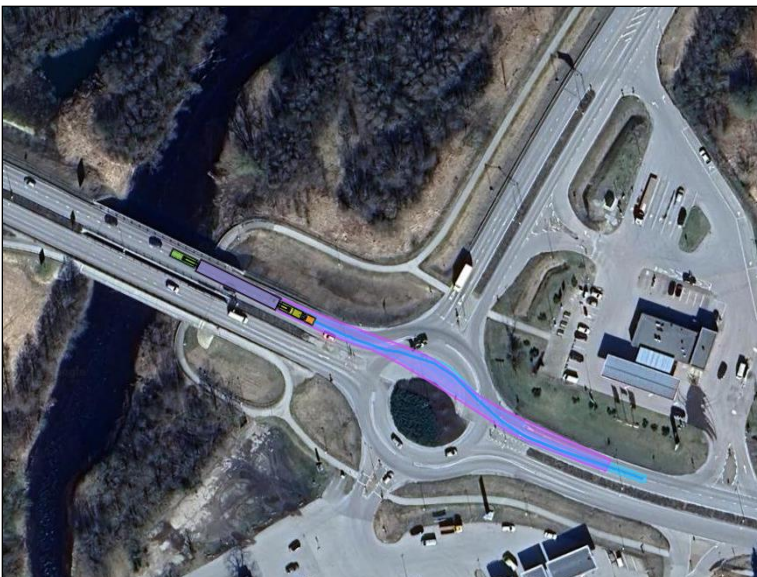


Actions:

- Ref. to Location 11.

Google maps coordinates: [59.311094, 24.436921 https://maps.app.goo.gl/Luz5Zre4nordKBq76](https://maps.app.goo.gl/Luz5Zre4nordKBq76)

Location 11-3. Road 8. Keila.



Actions:

- Ref. to Location 11.

Google maps coordinates: [59.311094, 24.436921 https://maps.app.goo.gl/Luz5Zre4nordKBq76](https://maps.app.goo.gl/Luz5Zre4nordKBq76)



7. TRANSPORT SURVEY

Location 12. Road 8. Keila.



Actions:

- Return to the normal traffic direction.

Google maps coordinates: [59.310422, 24.440701 https://maps.app.goo.gl/4LvAjTu8TAAwDY6r7](https://maps.app.goo.gl/4LvAjTu8TAAwDY6r7)

Location 13. Road 11.



Actions:

- 2 road signs must be removed.

Google maps coordinates: [59.317061, 24.503995 https://maps.app.goo.gl/4DPERuXsawcZGPff8](https://maps.app.goo.gl/4DPERuXsawcZGPff8)

Project no. / Ref. : 360	Dated: 13/01/2026	Page numer 63 of 189
Route: EE Paldiski – LV Smiltene		

7. TRANSPORT SURVEY

Location 29. Exit onto Road 420.



Actions:

- No Action.

Google maps coordinates: [59.315095, 24.635546](https://maps.app.goo.gl/3uwKEUJWMG6GodeT7) <https://maps.app.goo.gl/3uwKEUJWMG6GodeT7>

7. TRANSPORT SURVEY

Location 30. Road 420.

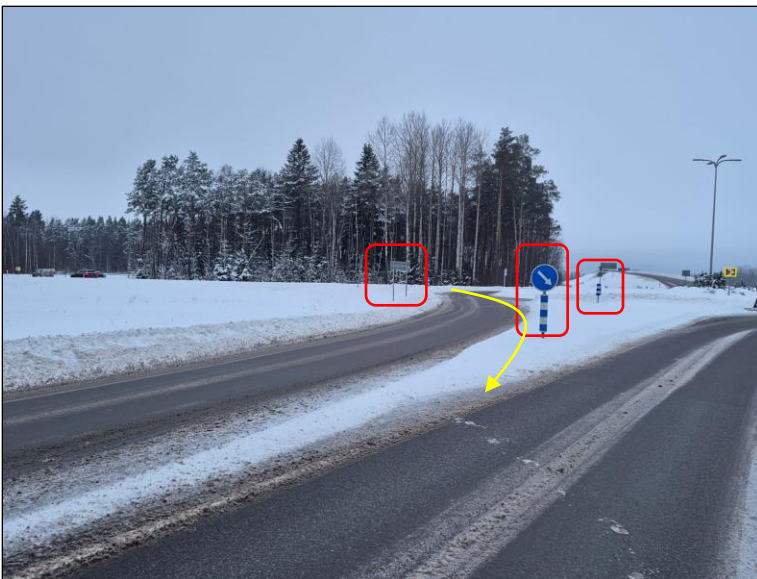


Actions:

- 5 road signs must be removed.

Google maps coordinates: [59.313621, 24.640394](https://maps.app.goo.gl/yNLKJorAC6MVpiwu6) <https://maps.app.goo.gl/yNLKJorAC6MVpiwu6>

Location 30-2. Road 420.



Actions:

- Ref. to Location 30.

Google maps coordinates: [59.313621, 24.640394](https://maps.app.goo.gl/yNLKJorAC6MVpiwu6) <https://maps.app.goo.gl/yNLKJorAC6MVpiwu6>

7. TRANSPORT SURVEY

Location 30-3. Road 420.



Actions:

- Ref. to Location 30.

Google maps coordinates: [59.313621, 24.640394](https://maps.app.goo.gl/yNLKJorAC6MVpiwu6) <https://maps.app.goo.gl/yNLKJorAC6MVpiwu6>

Location 31. Intersection of Road 420 and Road 340.



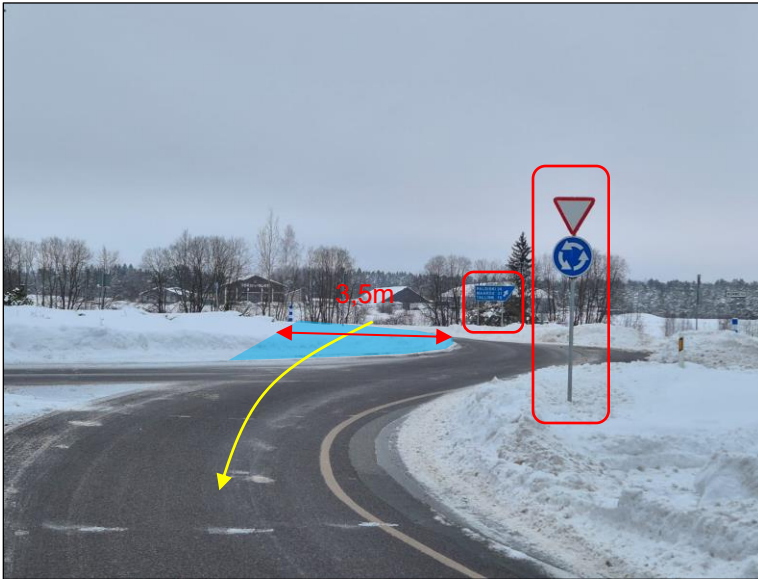
Actions:

- 4 road signs must be removed.
- 1 lighting pole must be dismantled.
- The need to construct a temporary paved widening on the outer side of the road curve. 45m².

Google maps coordinates: [59.308722, 24.632828](https://maps.app.goo.gl/Hx7mAJGGP7tVZmRK6) <https://maps.app.goo.gl/Hx7mAJGGP7tVZmRK6>

7. TRANSPORT SURVEY

Location 31-2. Intersection of Road 420 and Road 340.

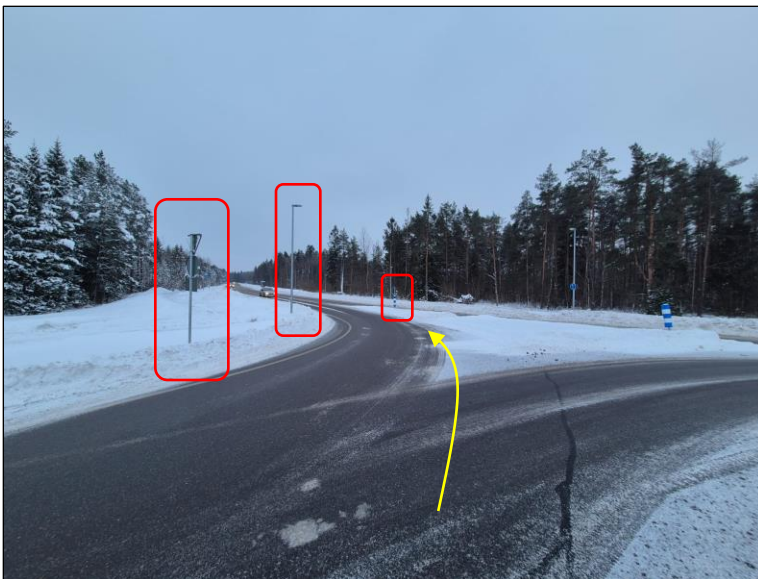


Actions:

- Ref. to Location 31.

Google maps coordinates: [59.308722, 24.632828](https://maps.app.goo.gl/Hx7mAJGGP7tVZmRK6) <https://maps.app.goo.gl/Hx7mAJGGP7tVZmRK6>

Location 31-3. Intersection of Road 420 and Road 340.



Actions:

- Ref. to Location 31.

Google maps coordinates: [59.308722, 24.632828](https://maps.app.goo.gl/Hx7mAJGGP7tVZmRK6) <https://maps.app.goo.gl/Hx7mAJGGP7tVZmRK6>

7. TRANSPORT SURVEY

Location 31-4. Intersection of Road 420 and Road 340.

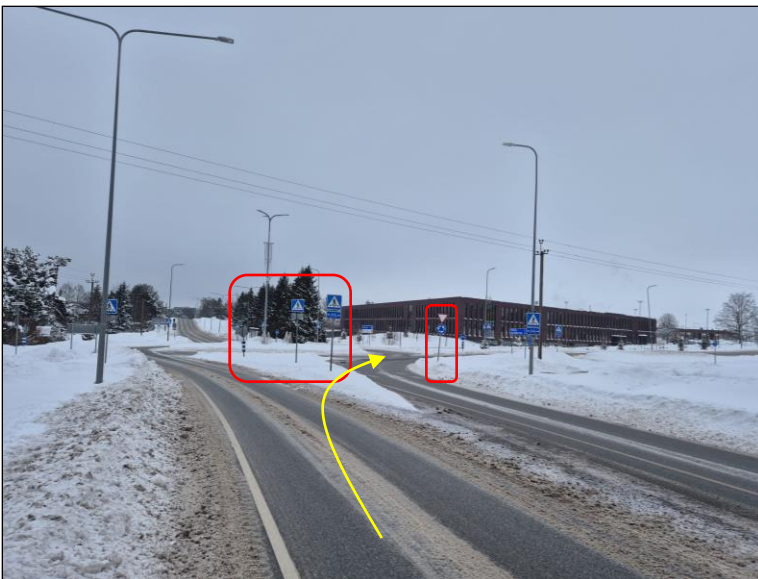


Actions:

- Ref. to Location 31.

Google maps coordinates: [59.308722, 24.632828](https://maps.app.goo.gl/Hx7mAJGGP7tVZmRK6) <https://maps.app.goo.gl/Hx7mAJGGP7tVZmRK6>

Location 32. Intersection of Road 340 and Road 342. Saku.



Actions:

- 7 road signs must be removed.

Google maps coordinates: [59.300271, 24.650937](https://maps.app.goo.gl/mpeawjQEpmcSiAgw5) <https://maps.app.goo.gl/mpeawjQEpmcSiAgw5>

7. TRANSPORT SURVEY

Location 32-2. Intersection of Road 340 and Road 342. Saku.

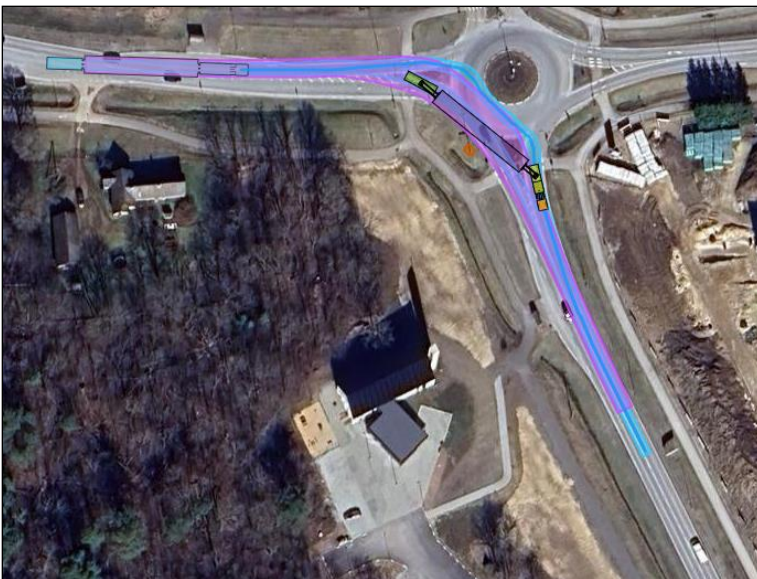


Actions:

- Ref. to Location 32.

Google maps coordinates: [59.300271, 24.650937 https://maps.app.goo.gl/mpeawjQEpMcSiAgw5](https://maps.app.goo.gl/mpeawjQEpMcSiAgw5)

Location 32-3. Intersection of Road 340 and Road 342. Saku.



Actions:

- Ref. to Location 32.

Google maps coordinates: [59.300271, 24.650937 https://maps.app.goo.gl/mpeawjQEpMcSiAgw5](https://maps.app.goo.gl/mpeawjQEpMcSiAgw5)

Project no. / Ref. : 360	Dated: 13/01/2026	Page number 69 of 189
Route: EE Paldiski – LV Smiltene		

7. TRANSPORT SURVEY

Location 33. Road 342. Saku.



Actions:

- 7 road signs must be removed.
- Driving through a roundabout in the opposite lane.

Google maps coordinates: [59.298691, 24.652134 https://maps.app.goo.gl/ZLNEyxCj44dgaDs19](https://maps.app.goo.gl/ZLNEyxCj44dgaDs19)

Location 33-2. Road 342. Saku.



Actions:

- Ref. to Location 33.

Google maps coordinates: [59.298691, 24.652134 https://maps.app.goo.gl/ZLNEyxCj44dgaDs19](https://maps.app.goo.gl/ZLNEyxCj44dgaDs19)

7. TRANSPORT SURVEY

Location 34. Road 342. Saku.



Actions:

- 4 road signs must be removed.

Google maps coordinates: [59.295691, 24.655094 https://maps.app.goo.gl/Ft1P7EbjTp5ZyzT6](https://maps.app.goo.gl/Ft1P7EbjTp5ZyzT6)

Location 34-2. Road 342. Saku.



Actions:

- Ref. to Location 34.

Google maps coordinates: [59.295691, 24.655094 https://maps.app.goo.gl/Ft1P7EbjTp5ZyzT6](https://maps.app.goo.gl/Ft1P7EbjTp5ZyzT6)

7. TRANSPORT SURVEY

Location 35. Road 342. Saku.



Actions:

- No Action.

Google maps coordinates: [59.293200, 24.657650](https://maps.app.goo.gl/dNCZtkVAiWUJqkmo8) <https://maps.app.goo.gl/dNCZtkVAiWUJqkmo8>

Location 36. Road 342. Saku.



Actions:

- 7 road signs must be removed.

Google maps coordinates: [59.288996, 24.661098](https://maps.app.goo.gl/6oUBKFvoPbjjP31N9) <https://maps.app.goo.gl/6oUBKFvoPbjjP31N9>

Project no. / Ref. : 360	Dated: 13/01/2026	Page numer 72 of 189
Route: EE Paldiski – LV Smiltene		

7. TRANSPORT SURVEY

Location 36-2. Road 342. Saku.



Actions:

- Ref. to Location 36.

Google maps coordinates: [59.288996, 24.661098 https://maps.app.goo.gl/6oUBKFvoPbjjP31N9](https://maps.app.goo.gl/6oUBKFvoPbjjP31N9)

Location 36-3. Road 342. Saku.



Actions:

- Ref. to Location 36.

Google maps coordinates: [59.288996, 24.661098 https://maps.app.goo.gl/6oUBKFvoPbjjP31N9](https://maps.app.goo.gl/6oUBKFvoPbjjP31N9)

7. TRANSPORT SURVEY

Location 37. Road 342. Saku.



Actions:

- 2 road signs must be removed.

Google maps coordinates: [59.286901, 24.662380](https://maps.app.goo.gl/qxHdu8VVoLvpp9HD6) <https://maps.app.goo.gl/qxHdu8VVoLvpp9HD6>

Location 38. Road 342.



Actions:

- Driving in the opposite lane.

Google maps coordinates: [59.275094, 24.673777](https://maps.app.goo.gl/kmDhXdTnEm8jYrPv6) <https://maps.app.goo.gl/kmDhXdTnEm8jYrPv6>

Project no. / Ref. : 360	Dated: 13/01/2026	Page numer 74 of 189
Route: EE Paldiski – LV Smiltene		

7. TRANSPORT SURVEY

Location 39. Road 342.



Actions:

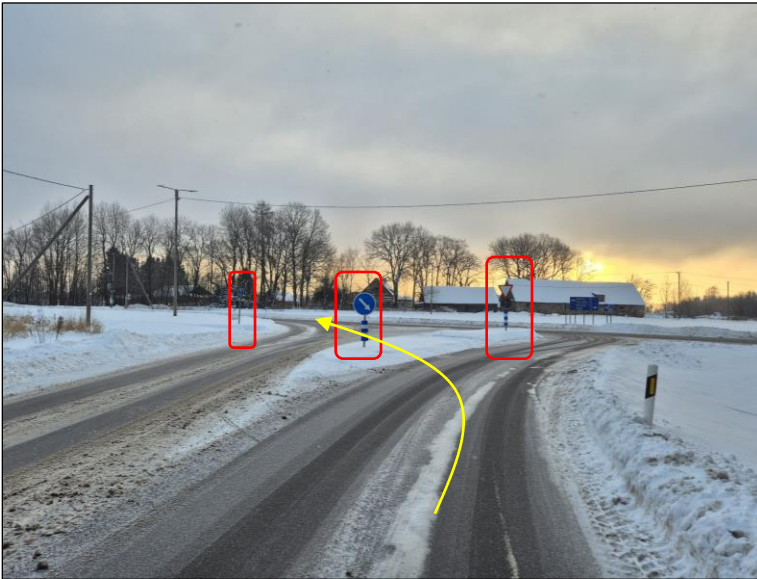
- Railway crossing.
- It may be necessary to arrange passage with the administrator.

Google maps coordinates: [59.274852, 24.675963 https://maps.app.goo.gl/gjqXbtTwFSdcb5kn9](https://maps.app.goo.gl/gjqXbtTwFSdcb5kn9)

Project no. / Ref. : 360	Dated: 13/01/2026	Page numer 75 of 189
Route: EE Paldiski – LV Smiltene		

7. TRANSPORT SURVEY

Location 41. Intersection of Road 342 and Road 240.



Actions:

- 3 road signs must be removed.

Google maps coordinates: [59.268255, 24.736217 https://maps.app.goo.gl/1t2vfWKqbReNX36T9](https://maps.app.goo.gl/1t2vfWKqbReNX36T9)

Location 41-2. Intersection of Road 342 and Road 240.



Actions:

- Ref. to Location 41.

Google maps coordinates: [59.268255, 24.736217 https://maps.app.goo.gl/1t2vfWKqbReNX36T9](https://maps.app.goo.gl/1t2vfWKqbReNX36T9)

7. TRANSPORT SURVEY

Location 41-3. Intersection of Road 342 and Road 240.



Actions:

- Ref. to Location 41.

Google maps coordinates: [59.268255, 24.736217 https://maps.app.goo.gl/1t2vfWKqbReNX36T9](https://maps.app.goo.gl/1t2vfWKqbReNX36T9)

Location 42. Intersection of Road 240 and Road 15.



Actions:

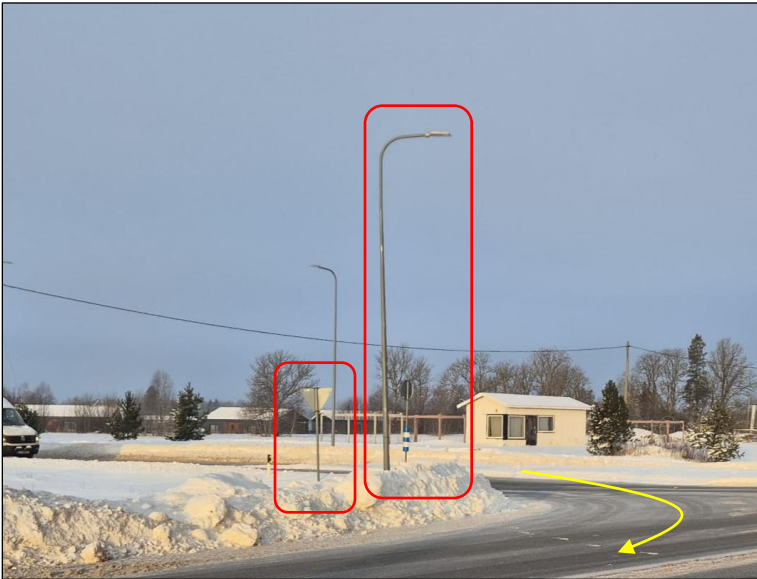
- 3 road signs must be removed.
- 1 lighting pole must be dismantled.

Google maps coordinates: [59.268823, 24.741075 https://maps.app.goo.gl/C7rtr1axPFxw4F4F6](https://maps.app.goo.gl/C7rtr1axPFxw4F4F6)

Project no. / Ref. : 360	Dated: 13/01/2026	Page number 77 of 189
Route: EE Paldiski – LV Smiltene		

7. TRANSPORT SURVEY

Location 42-2. Intersection of Road 240 and Road 15.



Actions:

- Ref. to Location 42.

Google maps coordinates: [59.268823, 24.741075](https://maps.app.goo.gl/C7rtr1axPFw4F4F6) <https://maps.app.goo.gl/C7rtr1axPFw4F4F6>

Location 42-3. Intersection of Road 240 and Road 15.



Actions:

- Ref. to Location 42.

Google maps coordinates: [59.268823, 24.741075](https://maps.app.goo.gl/C7rtr1axPFw4F4F6) <https://maps.app.goo.gl/C7rtr1axPFw4F4F6>

Project no. / Ref. : 360	Dated: 13/01/2026	Page number 78 of 189
Route: EE Paldiski – LV Smiltene		

7. TRANSPORT SURVEY

Location 42-4. Intersection of Road 240 and Road 15.



Actions:

- Ref. to Location 42.

Google maps coordinates: [59.268823, 24.741075](https://maps.app.goo.gl/C7rtr1axPFxw4F4F6) <https://maps.app.goo.gl/C7rtr1axPFxw4F4F6>

Location 43. Road 15.



Actions:

- Plastic posts are removable.

Google maps coordinates: [59.244739, 24.750311](https://maps.app.goo.gl/SFrvbphuAgZh2k3c9) <https://maps.app.goo.gl/SFrvbphuAgZh2k3c9>

Project no. / Ref. : 360	Dated: 13/01/2026	Page numer 79 of 189
Route: EE Paldiski – LV Smiltene		

7. TRANSPORT SURVEY

Location 44. Road 15.



Actions:

- Plastic posts are removable.

Google maps coordinates: [59.244062, 24.751255 https://maps.app.goo.gl/NiXeM5QSDMqkxh87](https://maps.app.goo.gl/NiXeM5QSDMqkxh87)

Location 45. Road 15.



Actions:

- Plastic posts are removable.

Google maps coordinates: [59.232666, 24.771928 https://maps.app.goo.gl/31mTs5TdMYdWxdbq9](https://maps.app.goo.gl/31mTs5TdMYdWxdbq9)



7. TRANSPORT SURVEY

Location 46. Road 15.



Actions:

- Plastic posts are removable.

Google maps coordinates: [59.225835, 24.777383 https://maps.app.goo.gl/fnUPK8jvzu1heYLy9](https://maps.app.goo.gl/fnUPK8jvzu1heYLy9)

Location 47. Road 15.



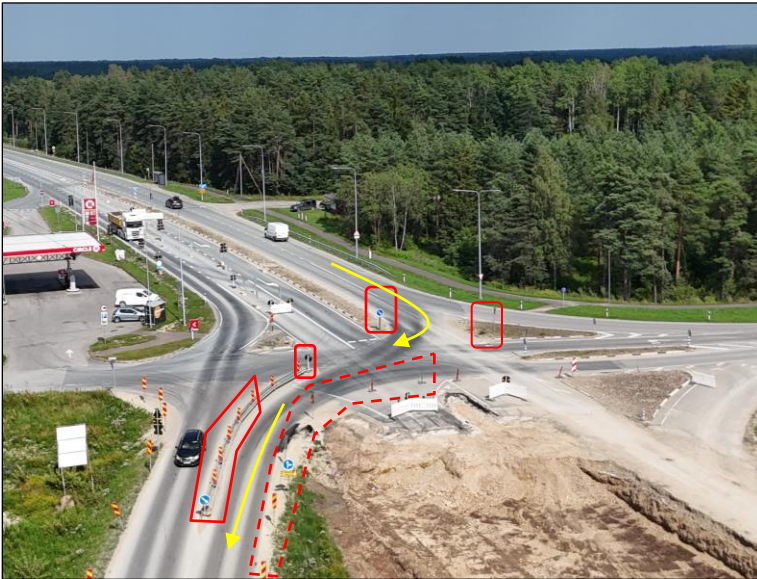
Actions:

- Temporary road works.
- Driving in the opposite lane.
- 4 traffic signs must be converted into a removable one.
- 7 road signs are removable.
- 10 meters of protective barriers must be dismantled.
- Obtain permission to pass from the site manager.
- Simulation not possible due to lack of detour marked on maps.
- Once the construction of the new section of the road is complete, it will be possible to drive straight across the new bridge. In this situation, it will be necessary to carry out load-bearing capacity assessments of the new bridge.

Google maps coordinates: [59.181070, 24.781620 https://maps.app.goo.gl/aty2Pcp5icytkfBq8](https://maps.app.goo.gl/aty2Pcp5icytkfBq8)

7. TRANSPORT SURVEY

Location 47-2. Road 15.

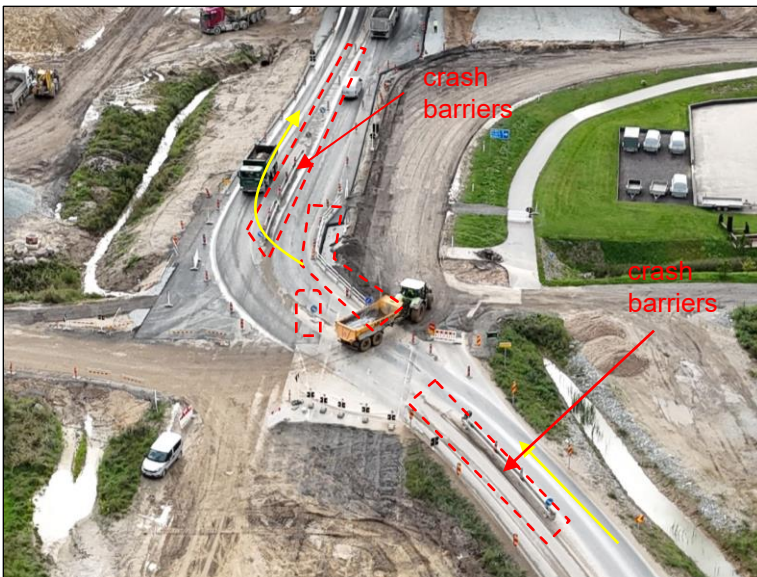


Actions:

- Ref. to Location 47.

Google maps coordinates: [59.181070, 24.781620 https://maps.app.goo.gl/aty2Pcp5icytkfBq8](https://maps.app.goo.gl/aty2Pcp5icytkfBq8)

Location 48. Road 15.



Actions:

- 50 meters of crash barriers must be dismantled.
- All signs on the construction site are removable.
- The height of the bridge allows for safe passage.
- Passage through the construction site must be agreed with the site manager.
- The simulation cannot be performed due to the lack of current maps.

Google maps coordinates: [59.170656, 24.772118 https://maps.app.goo.gl/mtgEzJDDrTgJ48Zw9](https://maps.app.goo.gl/mtgEzJDDrTgJ48Zw9)

7. TRANSPORT SURVEY

Location 48-2. Road 15.



Actions:

- Ref. to Location 48.

Google maps coordinates: [59.170656, 24.772118](https://maps.app.goo.gl/mtgEzJDDrTgJ48Zw9) <https://maps.app.goo.gl/mtgEzJDDrTgJ48Zw9>

Location 48-3. Road 15.



Actions:

- Ref. to Location 48.

Google maps coordinates: [59.170656, 24.772118](https://maps.app.goo.gl/mtgEzJDDrTgJ48Zw9) <https://maps.app.goo.gl/mtgEzJDDrTgJ48Zw9>

Project no. / Ref. : 360	Dated: 13/01/2026	Page numer 83 of 189
Route: EE Paldiski – LV Smiltene		

7. TRANSPORT SURVEY

Location 48-4. Road 15.



Actions:

- Ref. to Location 48

Google maps coordinates: [59.170656, 24.772118](https://maps.app.goo.gl/mtgEzJDDrTgJ48Zw9) <https://maps.app.goo.gl/mtgEzJDDrTgJ48Zw9>

Project no. / Ref. : 360	Dated: 13/01/2026	Page numer 84 of 189
Route: EE Paldiski – LV Smiltene		

7. TRANSPORT SURVEY

Location 51. Road 15. Hagudi.



Actions:

- Driving in the opposite lane.

Google maps coordinates: [59.066265, 24.816883](https://maps.app.goo.gl/snAGVeiguTTmCn4m8) <https://maps.app.goo.gl/snAGVeiguTTmCn4m8>

7. TRANSPORT SURVEY

Location 52. Road 15. Hagudi.



Actions:

- 2 traffic signs must be converted into a removable one.

Google maps coordinates: [59.062952, 24.820960 https://maps.app.goo.gl/WdcQ7Aod4y8dd1Ym8](https://maps.app.goo.gl/WdcQ7Aod4y8dd1Ym8)

Location 53. Road 15.



Actions:

- Railway crossing.
- It may be necessary to arrange passage with the administrator.

Google maps coordinates: [59.040968, 24.838237 https://maps.app.goo.gl/vDfiBQ5kH36LEge56](https://maps.app.goo.gl/vDfiBQ5kH36LEge56)

Project no. / Ref. : 360	Dated: 13/01/2026	Page number 86 of 189
Route: EE Paldiski – LV Smiltene		

7. TRANSPORT SURVEY

Location 54. Road 11.



Actions:

- 2 traffic signs must be converted into a removable one.

Google maps coordinates: [59.040649, 24.837648](https://maps.app.goo.gl/yqHyxEZAaAh56zaT7) <https://maps.app.goo.gl/yqHyxEZAaAh56zaT7>

Location 55. Intersection of Road 15 and Road 141. Rapla.



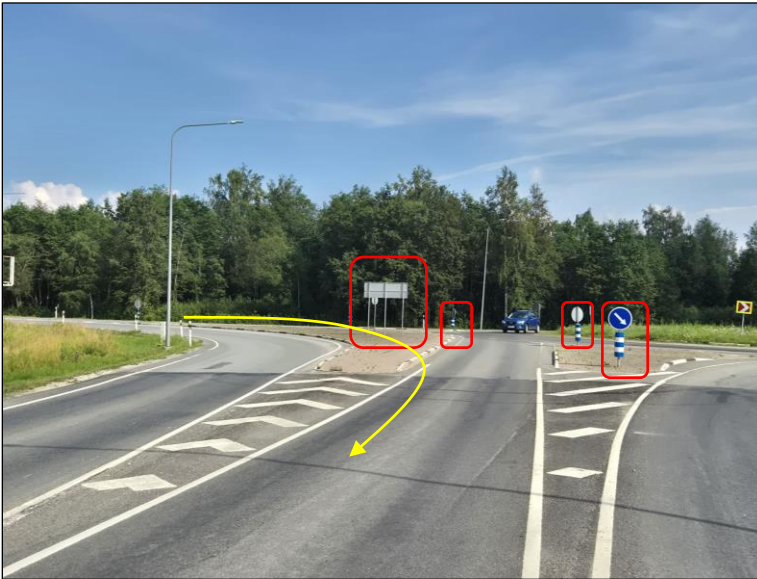
Actions:

- 7 traffic signs must be converted into a removable one.

Google maps coordinates: [59.014497, 24.800871](https://maps.app.goo.gl/CEvo9tfKzcd2R8Cz5) <https://maps.app.goo.gl/CEvo9tfKzcd2R8Cz5>

7. TRANSPORT SURVEY

Location 55-2. Intersection of Road 15 and Road 141. Rapla.



Actions:

- Ref. to Location 52.

Google maps coordinates: [59.014497, 24.800871](https://maps.app.goo.gl/CEvo9tfKzcd2R8Cz5) <https://maps.app.goo.gl/CEvo9tfKzcd2R8Cz5>

Location 55-3. Intersection of Road 15 and Road 141. Rapla.



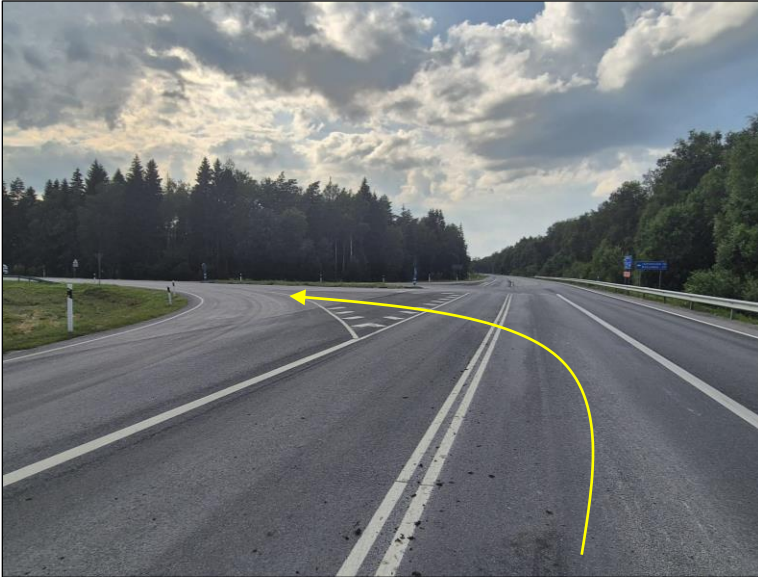
Actions:

- Ref. to Location 52.

Google maps coordinates: [59.014497, 24.800871](https://maps.app.goo.gl/CEvo9tfKzcd2R8Cz5) <https://maps.app.goo.gl/CEvo9tfKzcd2R8Cz5>

7. TRANSPORT SURVEY

Location 56. Intersection of Road 141 and Road 125. Rapla.



Actions:

- 1 traffic sign must be converted into a removable one.

Google maps coordinates: [59.019445, 24.782780 https://maps.app.goo.gl/48t1Frf92Kq58jPS6](https://maps.app.goo.gl/48t1Frf92Kq58jPS6)

Location 56-2. Intersection of Road 141 and Road 125. Rapla.



Actions:

- Ref. to Location 56.

Google maps coordinates: [59.019445, 24.782780 https://maps.app.goo.gl/48t1Frf92Kq58jPS6](https://maps.app.goo.gl/48t1Frf92Kq58jPS6)

7. TRANSPORT SURVEY

Location 56-6. Intersection of Road 141 and Road 125. Rapla.

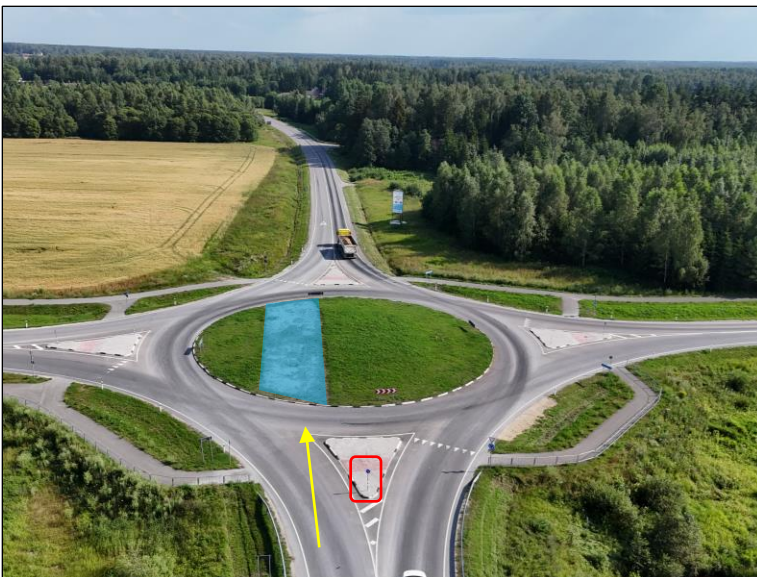


Actions:

- Ref. to Location 56.

Google maps coordinates: [59.019445, 24.782780 https://maps.app.goo.gl/48t1Frf92Kq58jPS6](https://maps.app.goo.gl/48t1Frf92Kq58jPS6)

Location 57. Road 125. Rapla.



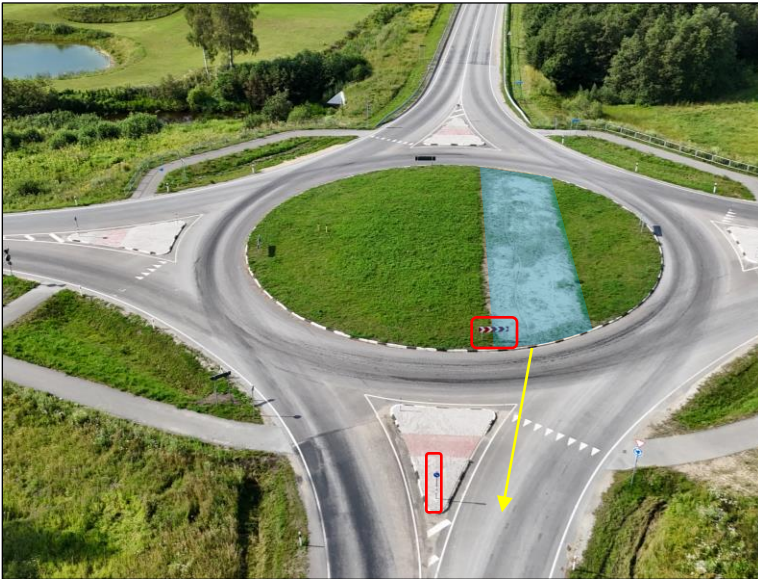
Actions:

- 3 traffic signs must be converted into a removable one.
- The need to construct a temporary paved bypass through the roundabout. 200 m².

Google maps coordinates: [58.994290, 24.771483 https://maps.app.goo.gl/7kg99J6hnAjP18cE8](https://maps.app.goo.gl/7kg99J6hnAjP18cE8)

7. TRANSPORT SURVEY

Location 57-2. Road 125. Rapla.



Actions:

- Ref. to Location 57.

Google maps coordinates: [58.994290, 24.771483 https://maps.app.goo.gl/7kg99J6hnAjP18cE8](https://maps.app.goo.gl/7kg99J6hnAjP18cE8)

Location 57-3. Road 125. Rapla.



Actions:

- Ref. to Location 57.

Google maps coordinates: [58.994290, 24.771483 https://maps.app.goo.gl/7kg99J6hnAjP18cE8](https://maps.app.goo.gl/7kg99J6hnAjP18cE8)

7. TRANSPORT SURVEY

Location 58. Intersection of Road 125 and Road 27. Rapla.



Actions:

- 1 traffic sign must be converted into a removable one.

Google maps coordinates: [58.990007, 24.784409](https://maps.app.goo.gl/Z6PSExEDbkz3kx7g7) <https://maps.app.goo.gl/Z6PSExEDbkz3kx7g7>

Location 58-2. Intersection of Road 125 and Road 27. Rapla.



Actions:

- Ref. to Location 58.

Google maps coordinates: [58.990007, 24.784409](https://maps.app.goo.gl/Z6PSExEDbkz3kx7g7) <https://maps.app.goo.gl/Z6PSExEDbkz3kx7g7>

Project no. / Ref. : 360	Dated: 13/01/2026	Page numer 92 of 189
Route: EE Paldiski – LV Smiltene		

7. TRANSPORT SURVEY

Location 59-2. Road 27.



Actions:

- Trim the branches.

Google maps coordinates: [58.969036, 24.766564](https://maps.app.goo.gl/rgtGQcogxpTHbtS67) <https://maps.app.goo.gl/rgtGQcogxpTHbtS67>

Project no. / Ref. : 360	Dated: 13/01/2026	Page number 93 of 189
Route: EE Paldiski – LV Smiltene		

7. TRANSPORT SURVEY

Location 60. Road 27.

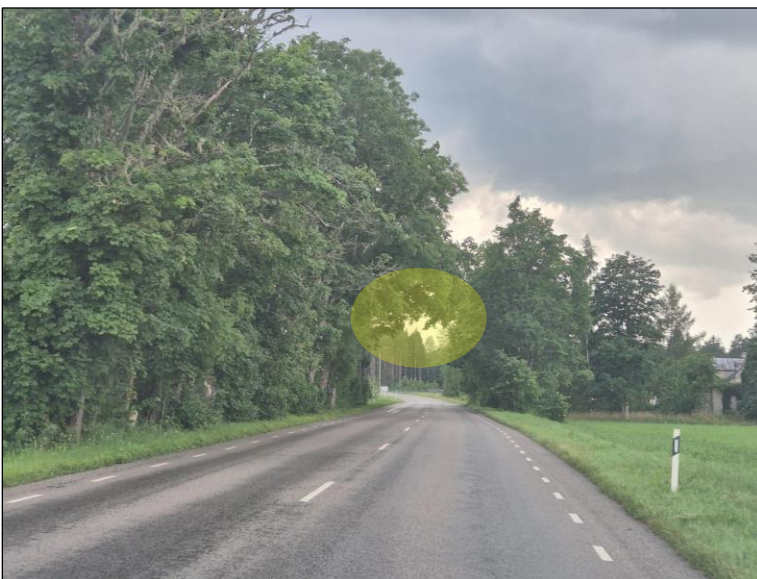


Actions:

- Trim the branches.

Google maps coordinates: [58.886647, 24.785598](https://maps.app.goo.gl/Fn9cizQ6DtI5wQW9) <https://maps.app.goo.gl/Fn9cizQ6DtI5wQW9>

Location 60-2. Road 27.



Actions:

- Trim the branches.
- The road clearance must be 6 m x 6 m.

Google maps coordinates: [58.885938, 24.784667](https://maps.app.goo.gl/cbgiNrG8Zypzcscz5) <https://maps.app.goo.gl/cbgiNrG8Zypzcscz5>

Project no. / Ref. : 360	Dated: 13/01/2026	Page number 95 of 189
Route: EE Paldiski – LV Smiltene		

7. TRANSPORT SURVEY

Location 64. Intersection of Road 27 and Road 58.



Actions:

- 2 traffic signs must be converted into a removable one.
- 1 road sign are removable.
- Area marked in blue (approximately 40m²) to be hardened by protective composite mats (load-bearing capacity 12t/axle);
- Trim the branches.

Google maps coordinates: [58.669382, 24.756081](https://maps.app.goo.gl/AWPQLSDGzKNwvNiy6) <https://maps.app.goo.gl/AWPQLSDGzKNwvNiy6>

7. TRANSPORT SURVEY

Location 64-2. Intersection of Road 27 and Road 58.



Actions:

- Ref. to Location 64.

Google maps coordinates: [58.669382, 24.756081](https://maps.app.goo.gl/AWPQLSDGzKNwvNjy6) <https://maps.app.goo.gl/AWPQLSDGzKNwvNjy6>

Location 64-3. Intersection of Road 27 and Road 58.



Actions:

- Ref. to Location 64.



Google maps coordinates: [58.669382, 24.756081](https://maps.app.goo.gl/AWPQLSDGzKNwvNjy6) <https://maps.app.goo.gl/AWPQLSDGzKNwvNjy6>

7. TRANSPORT SURVEY

Location 65. Road 58.



Actions:

- Railway crossing.
- It may be necessary to arrange passage with the administrator.

Google maps coordinates: [58.645185, 24.868350](https://maps.app.goo.gl/AWwK4tAenRzRsJe46) <https://maps.app.goo.gl/AWwK4tAenRzRsJe46>

Location 66. Intersection of Road 58 and Road 254.



Actions:

- 3 traffic signs must be converted into a removable one.

Google maps coordinates: [58.626183, 24.923715](https://maps.app.goo.gl/P8Mt8DnaaTGMsS36) <https://maps.app.goo.gl/P8Mt8DnaaTGMsS36>

Project no. / Ref. : 360	Dated: 13/01/2026	Page numer 98 of 189
Route: EE Paldiski – LV Smiltene		

7. TRANSPORT SURVEY

Location 66-2. Intersection of Road 58 and Road 254.



Actions:

- Ref. to Location 66.

Google maps coordinates: [58.626183, 24.923715](https://maps.app.goo.gl/P8Mt8DnaaTTGMS36) <https://maps.app.goo.gl/P8Mt8DnaaTTGMS36>

Location 66-3. Intersection of Road 58 and Road 254.



Actions:

- Ref. to Location 66.

Google maps coordinates: [58.626183, 24.923715](https://maps.app.goo.gl/P8Mt8DnaaTTGMS36) <https://maps.app.goo.gl/P8Mt8DnaaTTGMS36>

Project no. / Ref. : 360	Dated: 13/01/2026	Page numer 99 of 189
Route: EE Paldiski – LV Smiltene		

7. TRANSPORT SURVEY

Location 67. Intersection of Road 254 and Road 5.

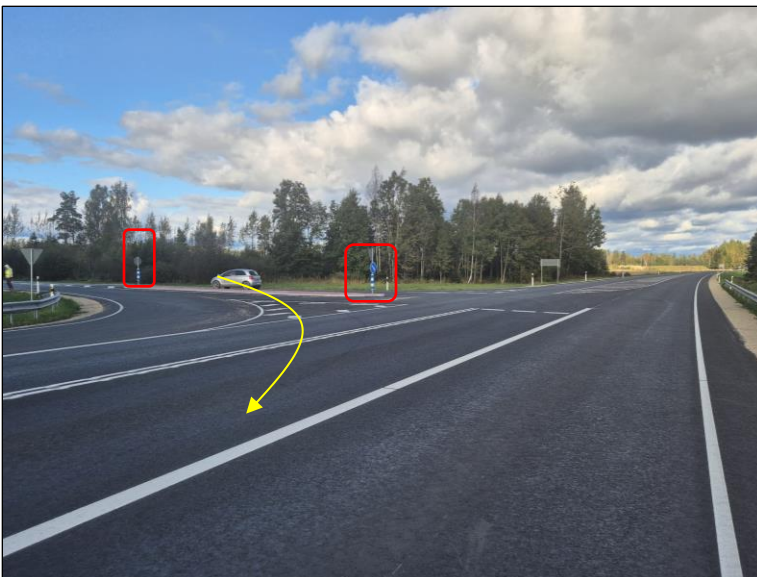


Actions:

- 2 traffic signs must be converted into a removable one.

Google maps coordinates: [58.620004, 24.926271 https://maps.app.goo.gl/Ba7mjplQnzHQhV6q7](https://maps.app.goo.gl/Ba7mjplQnzHQhV6q7)

Location 67-2. Intersection of Road 254 and Road 5.



Actions:

- Ref. to Location 67.

Google maps coordinates: [58.620004, 24.926271 https://maps.app.goo.gl/Ba7mjplQnzHQhV6q7](https://maps.app.goo.gl/Ba7mjplQnzHQhV6q7)

Project no. / Ref. : 360	Dated: 13/01/2026	Page number 100 of 189
Route: EE Paldiski – LV Smiltene		

7. TRANSPORT SURVEY

Location 67-3. Intersection of Road 254 and Road 5.



Actions:

- Ref. to Location 67.

Google maps coordinates: [58.620004, 24.926271](https://maps.app.goo.gl/Ba7mjpLQnzHQhV6q7) <https://maps.app.goo.gl/Ba7mjpLQnzHQhV6q7>

Location 68. Road 5.



Actions:

- 2 traffic signs must be converted into a removable one.

Google maps coordinates: [58.520318, 24.821496](https://maps.app.goo.gl/k1qcbqEkyLtyqEtc6) <https://maps.app.goo.gl/k1qcbqEkyLtyqEtc6>

7. TRANSPORT SURVEY

Location 69. Road 5.



Actions:

- 2 traffic signs must be converted into a removable one.

Google maps coordinates: [58.515657, 24.816930 https://maps.app.goo.gl/khrGkohLHWtEpYeH6](https://maps.app.goo.gl/khrGkohLHWtEpYeH6)

Location 70. Intersection of Road 5 and Road 59.



Actions:

- 2 traffic signs must be converted into a removable one.

Google maps coordinates: [58.504966, 24.795896 https://maps.app.goo.gl/ug9go55kcnuqh7m27](https://maps.app.goo.gl/ug9go55kcnuqh7m27)

Project no. / Ref. : 360	Dated: 13/01/2026	Page number 102 of 189
Route: EE Paldiski – LV Smiltene		

7. TRANSPORT SURVEY

Location 70-2. Intersection of Road 5 and Road 59.

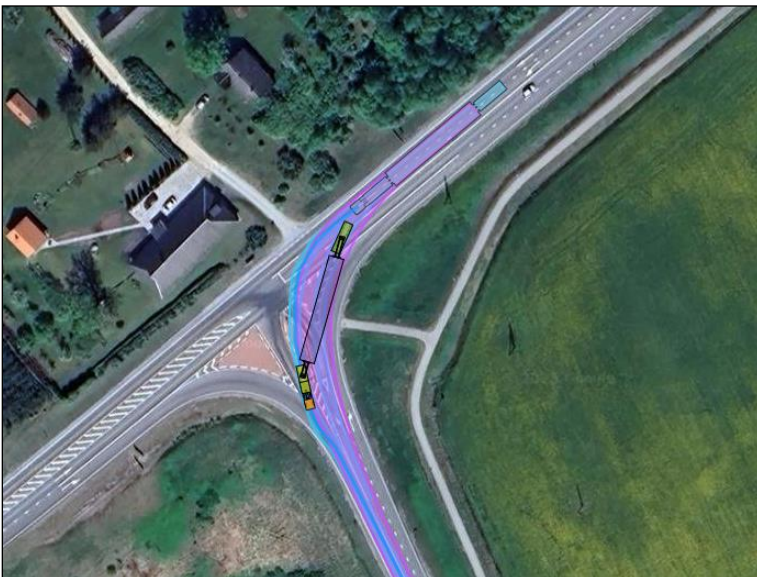


Actions:

- Ref. to Location 70.

Google maps coordinates: [58.504966, 24.795896 https://maps.app.goo.gl/ug9go55kcnuqh7m27](https://maps.app.goo.gl/ug9go55kcnuqh7m27)

Location 70-3. Intersection of Road 5 and Road 59.



Actions:

- Ref. to Location 70.

Google maps coordinates: [58.504966, 24.795896 https://maps.app.goo.gl/ug9go55kcnuqh7m27](https://maps.app.goo.gl/ug9go55kcnuqh7m27)

Project no. / Ref. : 360	Dated: 13/01/2026	Page numer 103 of 189
Route: EE Paldiski – LV Smiltene		

7. TRANSPORT SURVEY

Location 72. Road 5. Tori.



Actions:

- No Action.

Google maps coordinates: [58.482972, 24.814920 https://maps.app.goo.gl/qrawRD9vrDSH61YD9](https://maps.app.goo.gl/qrawRD9vrDSH61YD9)

Project no. / Ref. : 360	Dated: 13/01/2026	Page number 104 of 189
Route: EE Paldiski – LV Smiltene		

7. TRANSPORT SURVEY

Location 72 -2. Road 5. Tori.



Actions:

- Ref. to Location 72.

Google maps coordinates: [58.482972, 24.814920](https://maps.app.goo.gl/qrawRD9vrDSH61YD9) <https://maps.app.goo.gl/qrawRD9vrDSH61YD9>

Location 73. Road 5. Tori.



Actions:

- Trim the branches.
- The road clearance must be 5.5 m x 5.5 m.

Google maps coordinates: [58.481709, 24.811769](https://maps.app.goo.gl/Dnh1NHRsrkrzyb3z9) <https://maps.app.goo.gl/Dnh1NHRsrkrzyb3z9>

Project no. / Ref. : 360	Dated: 13/01/2026	Page numer 105 of 189
Route: EE Paldiski – LV Smiltene		

7. TRANSPORT SURVEY

Location 75. Road 5.



Actions:

- Trim the branches.

Google maps coordinates: [58.420352, 24.714575 https://maps.app.goo.gl/1jYq5zphZxD97TTB9](https://maps.app.goo.gl/1jYq5zphZxD97TTB9)



7. TRANSPORT SURVEY

Location 76. Road 5. Sindi.



Actions:

- 2 traffic signs must be converted into a removable one.

Google maps coordinates: [58.406538, 24.666135](https://maps.app.goo.gl/KNsPeARYNoYSddJf6) <https://maps.app.goo.gl/KNsPeARYNoYSddJf6>

Location 77. Road 5. Sindi.



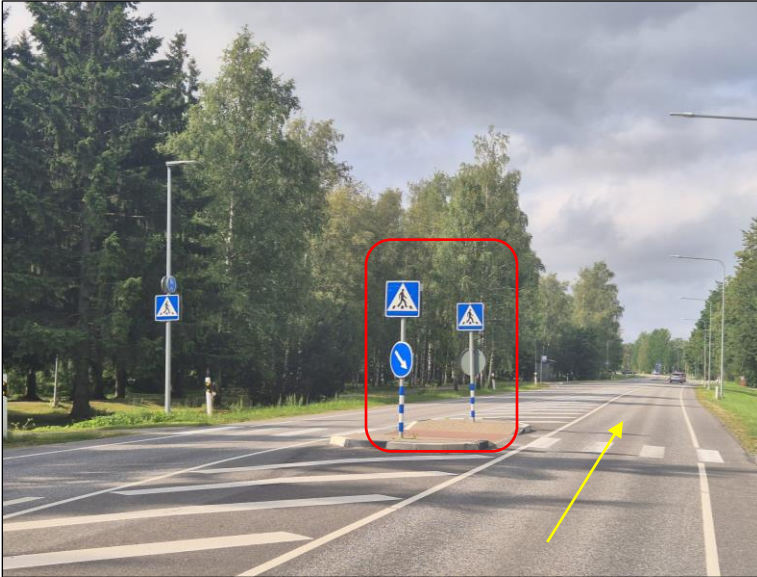
Actions:

- 3 traffic signs must be converted into a removable one.

Google maps coordinates: [58.404475, 24.660948](https://maps.app.goo.gl/YKf8zgTEzBbWVCdq7) <https://maps.app.goo.gl/YKf8zgTEzBbWVCdq7>

7. TRANSPORT SURVEY

Location 78. Road 5. Sindi.

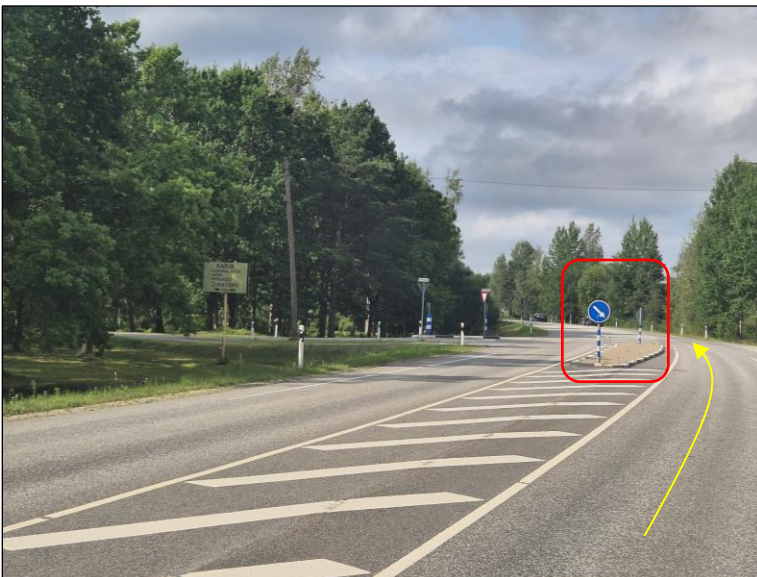


Actions:

- 2 traffic signs must be converted into a removable one.

Google maps coordinates: [58.403054, 24.657253 https://maps.app.goo.gl/XZgF4w4EyHduyVsZ9](https://maps.app.goo.gl/XZgF4w4EyHduyVsZ9)

Location 79. Road 5. Sindi.



Actions:

- 2 traffic signs must be converted into a removable one.

Google maps coordinates: [58.401173, 24.652490 https://maps.app.goo.gl/ZaRNvzJhKFRacDhAA](https://maps.app.goo.gl/ZaRNvzJhKFRacDhAA)

7. TRANSPORT SURVEY

Location 80. Road 5. Sindi.



Actions:

- 2 traffic signs must be converted into a removable one.

Google maps coordinates: [58.399276, 24.649818](https://maps.app.goo.gl/VTfbuBN3vk9VbS8P9) <https://maps.app.goo.gl/VTfbuBN3vk9VbS8P9>

Location 81. Road 5. Sindi.



Actions:

- 2 traffic signs must be converted into a removable one.

Google maps coordinates: [58.396318, 24.646911](https://maps.app.goo.gl/3KBoMRmCBAEq1dxEA) <https://maps.app.goo.gl/3KBoMRmCBAEq1dxEA>



7. TRANSPORT SURVEY

Location 82. Road 5. Seljametsa.

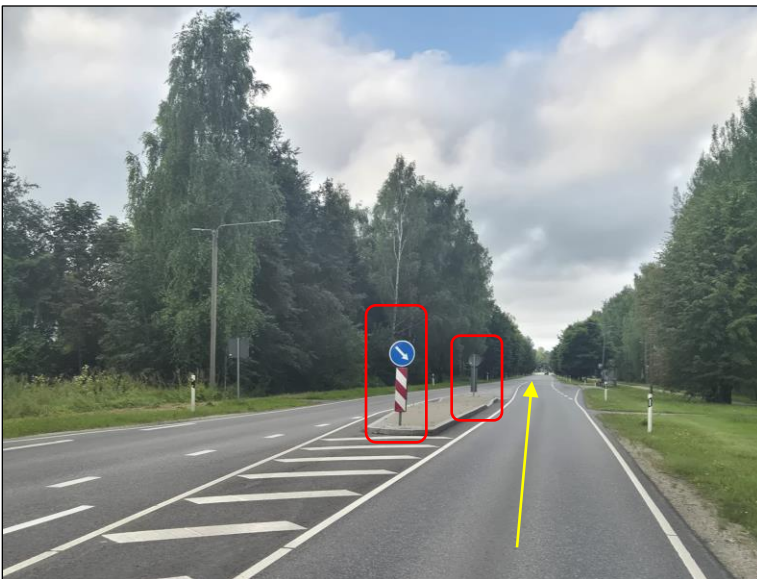


Actions:

- 2 traffic signs must be converted into a removable one.

Google maps coordinates: [58.387182, 24.640053](https://maps.app.goo.gl/NBymJex6TE9EJfYeA) <https://maps.app.goo.gl/NBymJex6TE9EJfYeA>

Location 83. Road 5. Paikuse.



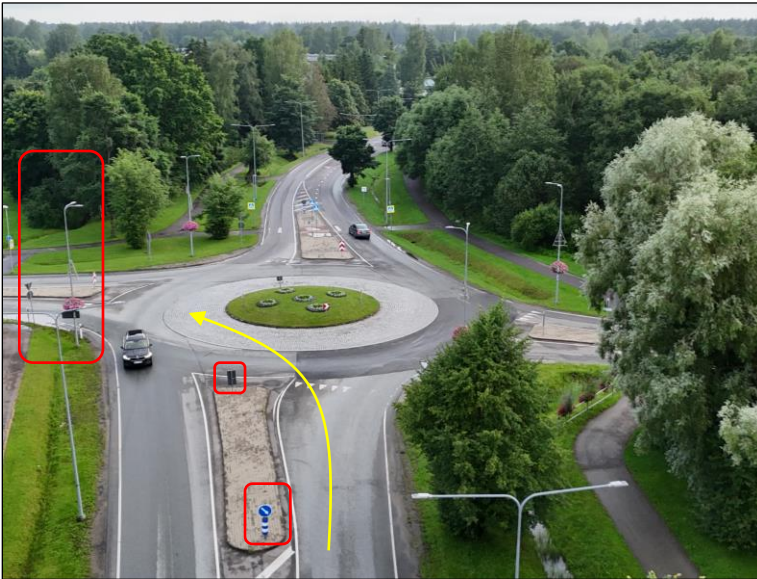
Actions:

- 2 traffic signs must be converted into a removable one.

Google maps coordinates: [58.380164, 24.630270](https://maps.app.goo.gl/5YoCw7v3diY5oBm39) <https://maps.app.goo.gl/5YoCw7v3diY5oBm39>

7. TRANSPORT SURVEY

Location 84. Intersection of Road 59 and Road 277. Paikuse.

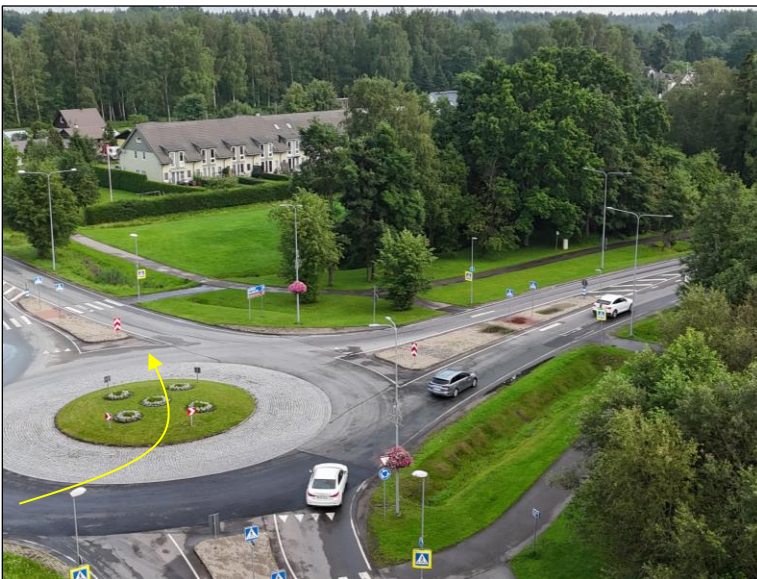


Actions:

- 6 traffic signs must be converted into a removable one.
- 2 lighting poles must be dismantled.

Google maps coordinates: [58.375818, 24.623151](https://maps.app.goo.gl/vPiuvebryAhNKFiR6) <https://maps.app.goo.gl/vPiuvebryAhNKFiR6>

Location 84-2. Intersection of Road 59 and Road 277. Paikuse.



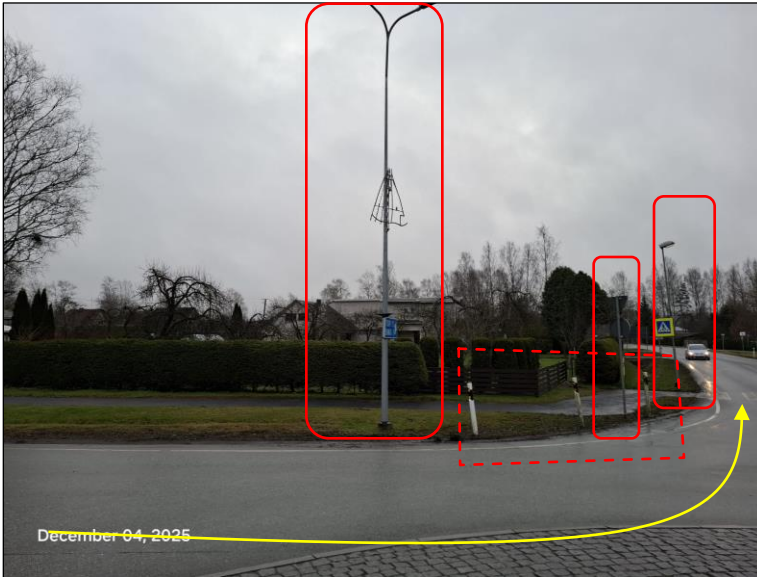
Actions:

- Ref. to Location 84.

Google maps coordinates: [58.375818, 24.623151](https://maps.app.goo.gl/vPiuvebryAhNKFiR6) <https://maps.app.goo.gl/vPiuvebryAhNKFiR6>

7. TRANSPORT SURVEY

Location 84-3. Intersection of Road 59 and Road 277. Paikuse.

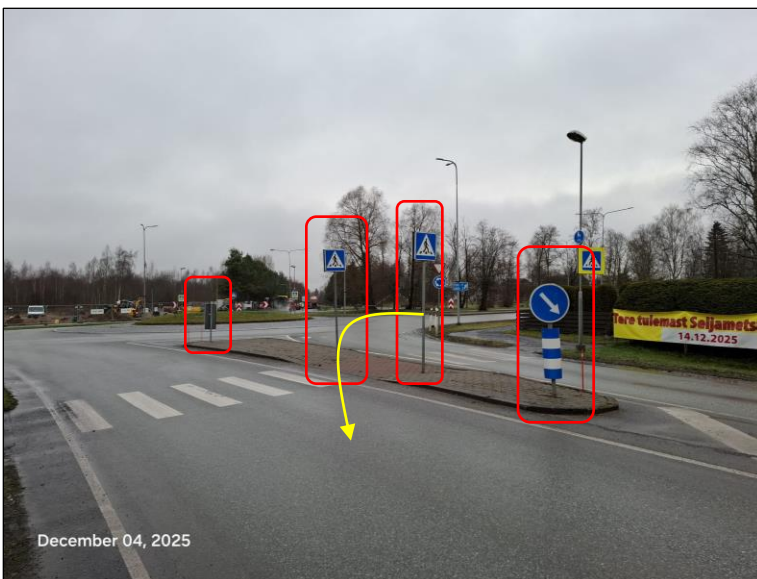


Actions:

- Ref. to Location 84.

Google maps coordinates: [58.375818, 24.623151](https://maps.app.goo.gl/vPiuvebryAhNKFiR6) <https://maps.app.goo.gl/vPiuvebryAhNKFiR6>

Location 84-4. Intersection of Road 59 and Road 277. Paikuse.



Actions:

- Ref. to Location 84.

Google maps coordinates: [58.375818, 24.623151](https://maps.app.goo.gl/vPiuvebryAhNKFiR6) <https://maps.app.goo.gl/vPiuvebryAhNKFiR6>

Project no. / Ref. : 360	Dated: 13/01/2026	Page number 112 of 189
Route: EE Paldiski – LV Smiltene		

7. TRANSPORT SURVEY

Location 84-3. Intersection of Road 59 and Road 277. Paikuse.



Actions:

- Ref. to Location 84.

Google maps coordinates: [58.375818, 24.623151](https://maps.app.goo.gl/vPiuvebryAhNKFiR6) <https://maps.app.goo.gl/vPiuvebryAhNKFiR6>

Location 85. Road 277. Paikuse.



Actions:

- Trim the branches.
- The road clearance must be 6 m x 6m.

Google maps coordinates: [58.373601, 24.627821](https://maps.app.goo.gl/XGofAnC8SJ93vAB9A) <https://maps.app.goo.gl/XGofAnC8SJ93vAB9A>

Project no. / Ref. : 360	Dated: 13/01/2026	Page numer 113 of 189
Route: EE Paldiski – LV Smiltene		

7. TRANSPORT SURVEY

Location 86. Road 277. Paikuse.

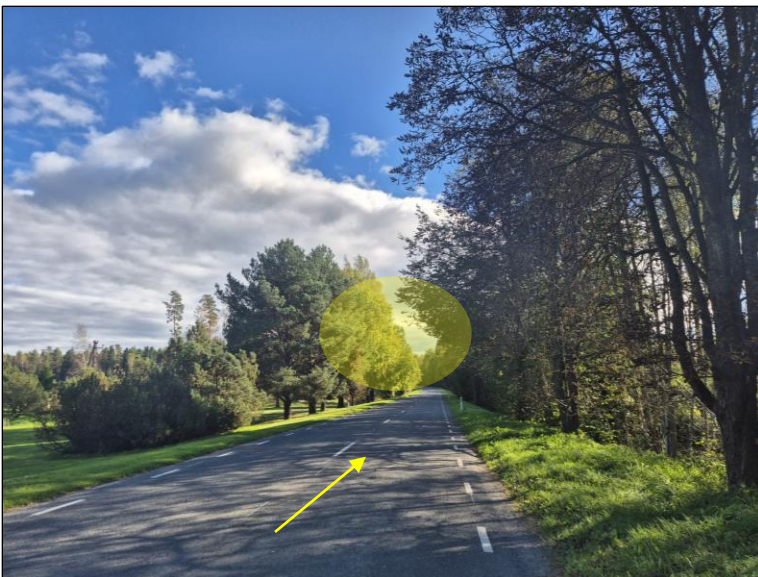


Actions:

- Trim the branches.
- The road clearance must be 6 m x 6m.

Google maps coordinates: [58.368558, 24.636545](https://maps.app.goo.gl/CMerDPY64VG97Liz8) <https://maps.app.goo.gl/CMerDPY64VG97Liz8>

Location 87. Road 277.



Actions:

- Trim the branches.
- The road clearance must be 6 m x 6m.

Google maps coordinates: [58.348256, 24.667851](https://maps.app.goo.gl/WD4enjGST3J64cZK6) <https://maps.app.goo.gl/WD4enjGST3J64cZK6>

Project no. / Ref. : 360	Dated: 13/01/2026	Page numer 114 of 189
Route: EE Paldiski – LV Smiltene		

7. TRANSPORT SURVEY

Location 89. Intersection of Road 277 and Road 343.



Actions:

- Plastic posts are removable;
- Area marked in blue to be hardened by protective composite mats in case. 80m²

Google maps coordinates: [58.342975, 24.692354](https://maps.app.goo.gl/3X461EEyvmdfDFEb8) <https://maps.app.goo.gl/3X461EEyvmdfDFEb8>

7. TRANSPORT SURVEY

Location 89-2. Intersection of Road 277 and Road 343.



Actions:

- Ref. to Location 89.

Google maps coordinates: [58.342975, 24.692354 https://maps.app.goo.gl/3X461EEyvmdfDFEb8](https://maps.app.goo.gl/3X461EEyvmdfDFEb8)

Location 89-3. Intersection of Road 277 and Road 343.



Actions:

- Ref. to Location 89.



Google maps coordinates: [58.342975, 24.692354 https://maps.app.goo.gl/3X461EEyvmdfDFEb8](https://maps.app.goo.gl/3X461EEyvmdfDFEb8)

Project no. / Ref. : 360	Dated: 13/01/2026	Page numer 116 of 189
Route: EE Paldiski – LV Smiltene		

7. TRANSPORT SURVEY

Location 90. Road 343.



Actions:

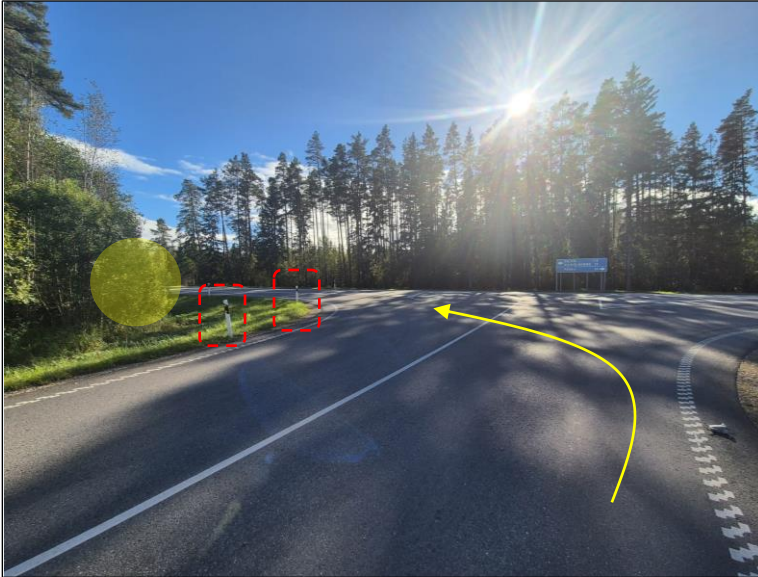
- Trim the branches.
- The road clearance must be 6 m x 6m.

Google maps coordinates: [58.311009, 24.689948 https://maps.app.goo.gl/sQtLX5Mc7sW56EMU9](https://maps.app.goo.gl/sQtLX5Mc7sW56EMU9)

Project no. / Ref. : 360	Dated: 13/01/2026	Page numer 117 of 189
Route: EE Paldiski – LV Smiltene		

7. TRANSPORT SURVEY

Location 92. Intersection of Road 343 and Road 6.



Actions:

- Plastic posts are removable.
- Adapt vegetation.

Google maps coordinates: [58.258512, 24.673901 https://maps.app.goo.gl/XvPCnuAtEYMW1Qmf7](https://maps.app.goo.gl/XvPCnuAtEYMW1Qmf7)

Location 92-2. Intersection of Road 343 and Road 6.



Actions:

- Ref. to Location 92

Google maps coordinates: [58.258512, 24.673901 https://maps.app.goo.gl/XvPCnuAtEYMW1Qmf7](https://maps.app.goo.gl/XvPCnuAtEYMW1Qmf7)

Project no. / Ref. : 360	Dated: 13/01/2026	Page numer 118 of 189
Route: EE Paldiski – LV Smiltene		

7. TRANSPORT SURVEY

Location 93. Road 6.



Actions:

- 2 traffic signs must be converted into a removable one.

Google maps coordinates: [58.235524, 24.695307](https://maps.app.goo.gl/g1kJBAZPw5pkstrK8) <https://maps.app.goo.gl/g1kJBAZPw5pkstrK8>

Project no. / Ref. : 360	Dated: 13/01/2026	Page numer 119 of 189
Route: EE Paldiski – LV Smiltene		

7. TRANSPORT SURVEY

Location 94. Road 6. Kurmi



Actions:

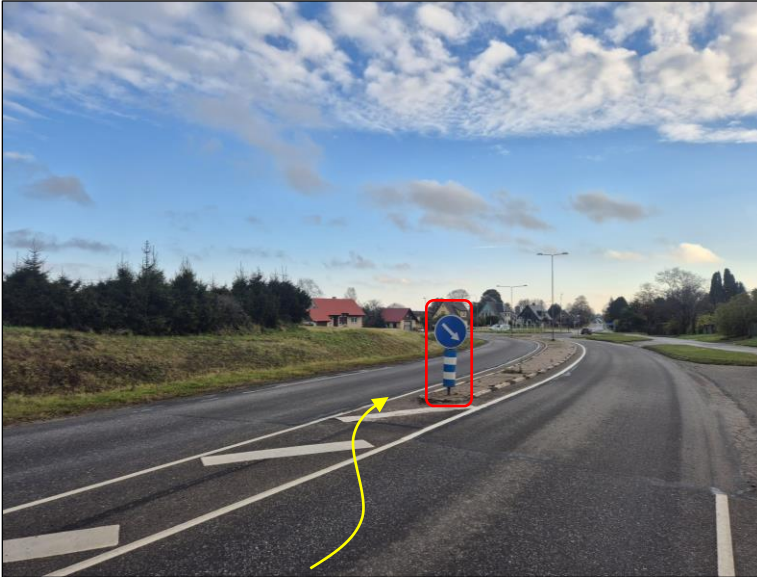
- Trim the branches.

Google maps coordinates: [58.191612, 24.769530 https://maps.app.goo.gl/hSyp6A8zhWb8p1Qj8](https://maps.app.goo.gl/hSyp6A8zhWb8p1Qj8)

Project no. / Ref. : 360	Dated: 13/01/2026	Page number 120 of 189
Route: EE Paldiski – LV Smiltene		

7. TRANSPORT SURVEY

Location 96. Road 6. Abja-Paluoja.



Actions:

- 4 traffic signs must be converted into a removable one.
- 1 lighting pole must be dismantled.
- Movement in the opposite traffic direction

Google maps coordinates: [58.125154, 25.340881 https://maps.app.goo.gl/kaJ5MjYqAboKdyPR9](https://maps.app.goo.gl/kaJ5MjYqAboKdyPR9)

Location 96-2. Road 6. Abja-Paluoja.



Actions:

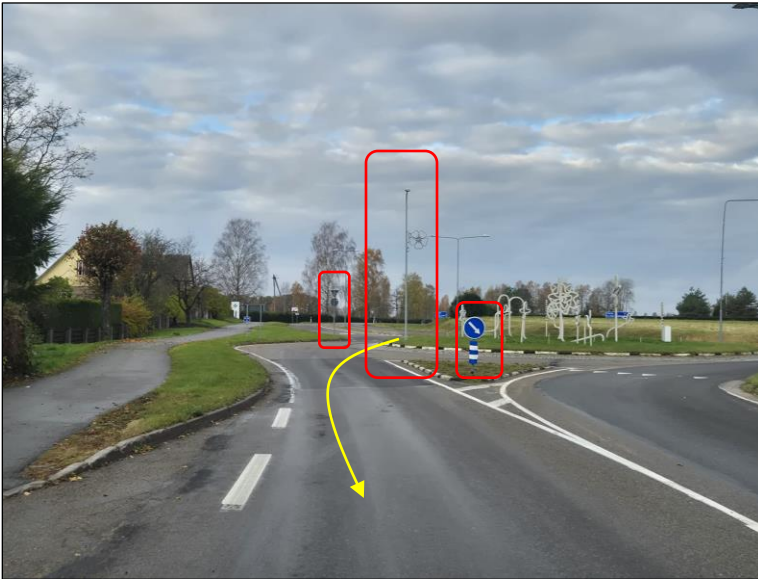
- Ref. to Location 93.

Google maps coordinates: [58.125154, 25.340881 https://maps.app.goo.gl/kaJ5MjYqAboKdyPR9](https://maps.app.goo.gl/kaJ5MjYqAboKdyPR9)

Project no. / Ref. : 360	Dated: 13/01/2026	Page number 121 of 189
Route: EE Paldiski – LV Smiltene		

7. TRANSPORT SURVEY

Location 96-3. Road 6. Abja-Paluoja.



Actions:

- Ref. to Location 93.

Google maps coordinates: [58.125154, 25.340881](https://maps.app.goo.gl/kaJ5MjYqAboKdyPR9) <https://maps.app.goo.gl/kaJ5MjYqAboKdyPR9>

Location 96-4. Road 6. Abja-Paluoja.



Actions:

- Ref. to Location 93.

Google maps coordinates: [58.125154, 25.340881](https://maps.app.goo.gl/kaJ5MjYqAboKdyPR9) <https://maps.app.goo.gl/kaJ5MjYqAboKdyPR9>

7. TRANSPORT SURVEY

Location 97. Road 6. Abja-Paluoja.



Actions:

- The need to temporarily widen the road surface on the outside of the bend. 160m².
- 3 traffic signs must be converted into a removable one.

Google maps coordinates: [58.125877, 25.359417](https://maps.app.goo.gl/M6SYUp7V2UboFPFPA) <https://maps.app.goo.gl/M6SYUp7V2UboFPFPA>

Location 97-2. Road 6. Abja-Paluoja.



Actions:

- Ref. to Location 97.

Google maps coordinates: [58.125877, 25.359417](https://maps.app.goo.gl/M6SYUp7V2UboFPFPA) <https://maps.app.goo.gl/M6SYUp7V2UboFPFPA>

Project no. / Ref. : 360	Dated: 13/01/2026	Page number 123 of 189
Route: EE Paldiski – LV Smiltene		

7. TRANSPORT SURVEY

Location 97-3. Road 6. Abja-Paluoja.



Actions:

- Ref. to Location 94.

Google maps coordinates: [58.125877, 25.359417](https://maps.app.goo.gl/M6SYUp7V2UboFPFPA) <https://maps.app.goo.gl/M6SYUp7V2UboFPFPA>

Location 98. The intersection of road 6 and road 201. Abja-Paluoja.



Actions:

- 6 traffic signs must be converted into a removable one.
- 15 meters of protective barriers must be dismantled.

Google maps coordinates: [58.119745, 25.365248](https://maps.app.goo.gl/s4bv1azd7Nc81DHb6) <https://maps.app.goo.gl/s4bv1azd7Nc81DHb6>

7. TRANSPORT SURVEY

Location 98-2. The intersection of road 6 and road 201. Abja-Paluoja.



Actions:

- Ref. to Location 98.

Google maps coordinates: [58.119745, 25.365248](https://maps.app.goo.gl/s4bv1azd7Nc81DHb6) <https://maps.app.goo.gl/s4bv1azd7Nc81DHb6>

Location 98-3. The intersection of road 6 and road 201. Abja-Paluoja.



Actions:

- Ref. to Location 95.

Google maps coordinates: [58.119745, 25.365248](https://maps.app.goo.gl/s4bv1azd7Nc81DHb6) <https://maps.app.goo.gl/s4bv1azd7Nc81DHb6>

Project no. / Ref. : 360	Dated: 13/01/2026	Page numer 125 of 189
Route: EE Paldiski – LV Smiltene		

7. TRANSPORT SURVEY

Location 99. Road 201.



Actions:

- Trim the branches.

Google maps coordinates: [58.112979, 25.361228](https://maps.app.goo.gl/AVQSVQybE2akXVav9) <https://maps.app.goo.gl/AVQSVQybE2akXVav9>

Project no. / Ref. : 360	Dated: 13/01/2026	Page numer 126 of 189
Route: EE Paldiski – LV Smiltene		

7. TRANSPORT SURVEY

Location 101. Road 201.

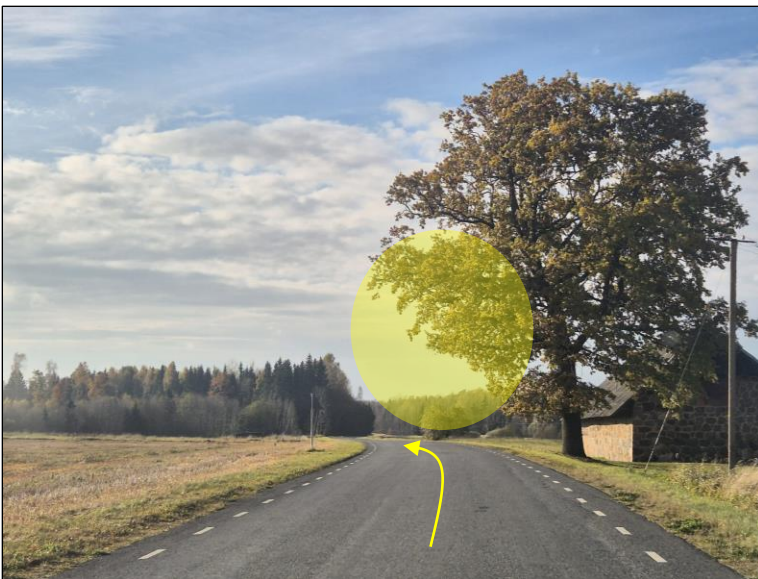


Actions:

- Trim the branches.

Google maps coordinates: [58.109840, 25.362351](https://maps.app.goo.gl/3xtvx9gFQYjTFEY5) <https://maps.app.goo.gl/3xtvx9gFQYjTFEY5>

Location 102. Road 201.



Actions:

- Trim the branches.

Google maps coordinates: [58.099578, 25.364982](https://maps.app.goo.gl/7yaJS3EvMv8XnBfR7) <https://maps.app.goo.gl/7yaJS3EvMv8XnBfR7>

Project no. / Ref. : 360	Dated: 13/01/2026	Page number 127 of 189
Route: EE Paldiski – LV Smiltene		

7. TRANSPORT SURVEY

Location 103. Road 201.



Actions:

- Trim the branches.

Google maps coordinates: [58.082960, 25.361300](https://maps.app.goo.gl/tUzdE8PoEWtKJGtp8) <https://maps.app.goo.gl/tUzdE8PoEWtKJGtp8>

Location 104. Road 201.



Actions:

- Trim the branches.

Google maps coordinates: [58.079097, 25.361306](https://maps.app.goo.gl/cuXokbX7Wp1ARECp9) <https://maps.app.goo.gl/cuXokbX7Wp1ARECp9>

Project no. / Ref. : 360	Dated: 13/01/2026	Page numer 128 of 189
Route: EE Paldiski – LV Smiltene		

7. TRANSPORT SURVEY

Location 105. Road 201.



Actions:

- Trim the branches.
- The road clearance must be 6 m x 6 m.

Google maps coordinates: [58.060250, 25.366626 https://maps.app.goo.gl/t9dcZez6sPvdB1PJ9](https://maps.app.goo.gl/t9dcZez6sPvdB1PJ9)

7. TRANSPORT SURVEY

Location 107. Road 201.



Actions:

- Trim the branches;
- Area marked in blue (approximately 50m²) to be hardened by protective composite mats (load-bearing capacity 12t/axle).

Google maps coordinates: [58.057193, 25.367651](https://maps.app.goo.gl/KaSctA47UQtzkjNA7) <https://maps.app.goo.gl/KaSctA47UQtzkjNA7>

Location 107-2. Road 201.



Actions:

- Ref. to Location 107.

Google maps coordinates: [58.057193, 25.367651](https://maps.app.goo.gl/KaSctA47UQtzkjNA7) <https://maps.app.goo.gl/KaSctA47UQtzkjNA7>

Project no. / Ref. : 360	Dated: 13/01/2026	Page number 130 of 189
Route: EE Paldiski – LV Smiltene		

7. TRANSPORT SURVEY

Location 108. Road 201.



Actions:

- Trim the branches.

Google maps coordinates: [58.053408, 25.373296](https://maps.app.goo.gl/KJMrfXzN4fsnDznq7) <https://maps.app.goo.gl/KJMrfXzN4fsnDznq7>

Location 109. Road 201.



Actions:

- Trim the branches.

Google maps coordinates: [58.049367, 25.374652](https://maps.app.goo.gl/cmr14ZjzrAYhs2SaA) <https://maps.app.goo.gl/cmr14ZjzrAYhs2SaA>

Project no. / Ref. : 360	Dated: 13/01/2026	Page number 131 of 189
Route: EE Paldiski – LV Smiltene		

7. TRANSPORT SURVEY

Location 110. Road 201.

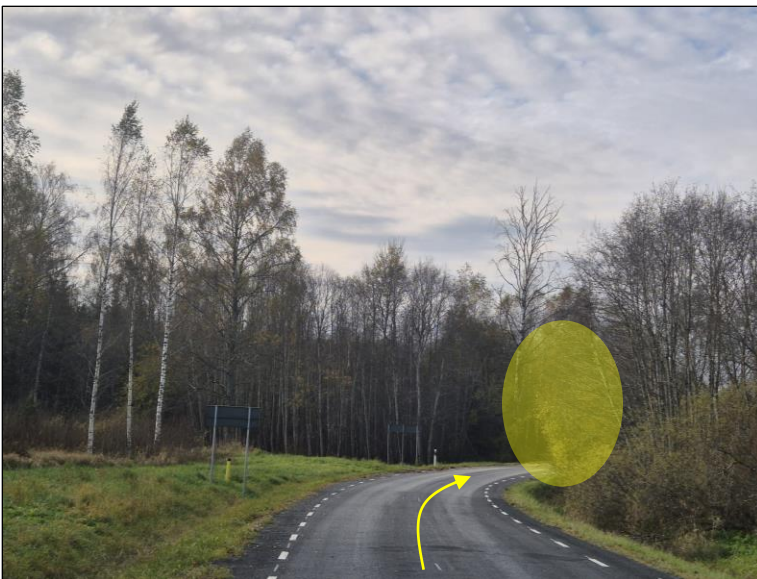


Actions:

- Trim the branches.

Google maps coordinates: [58.041884, 25.365432](https://maps.app.goo.gl/5g7Rmbst2mnYqVZV6) <https://maps.app.goo.gl/5g7Rmbst2mnYqVZV6>

Location 111. Road 201.



Actions:

- Trim the branches.

Google maps coordinates: [58.039089, 25.357775](https://maps.app.goo.gl/dbLQeXtYqJgxf679) <https://maps.app.goo.gl/dbLQeXtYqJgxf679>