







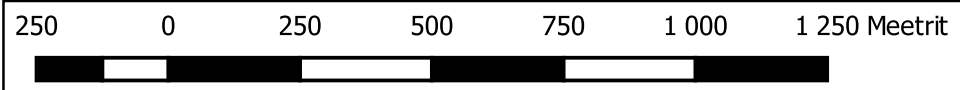
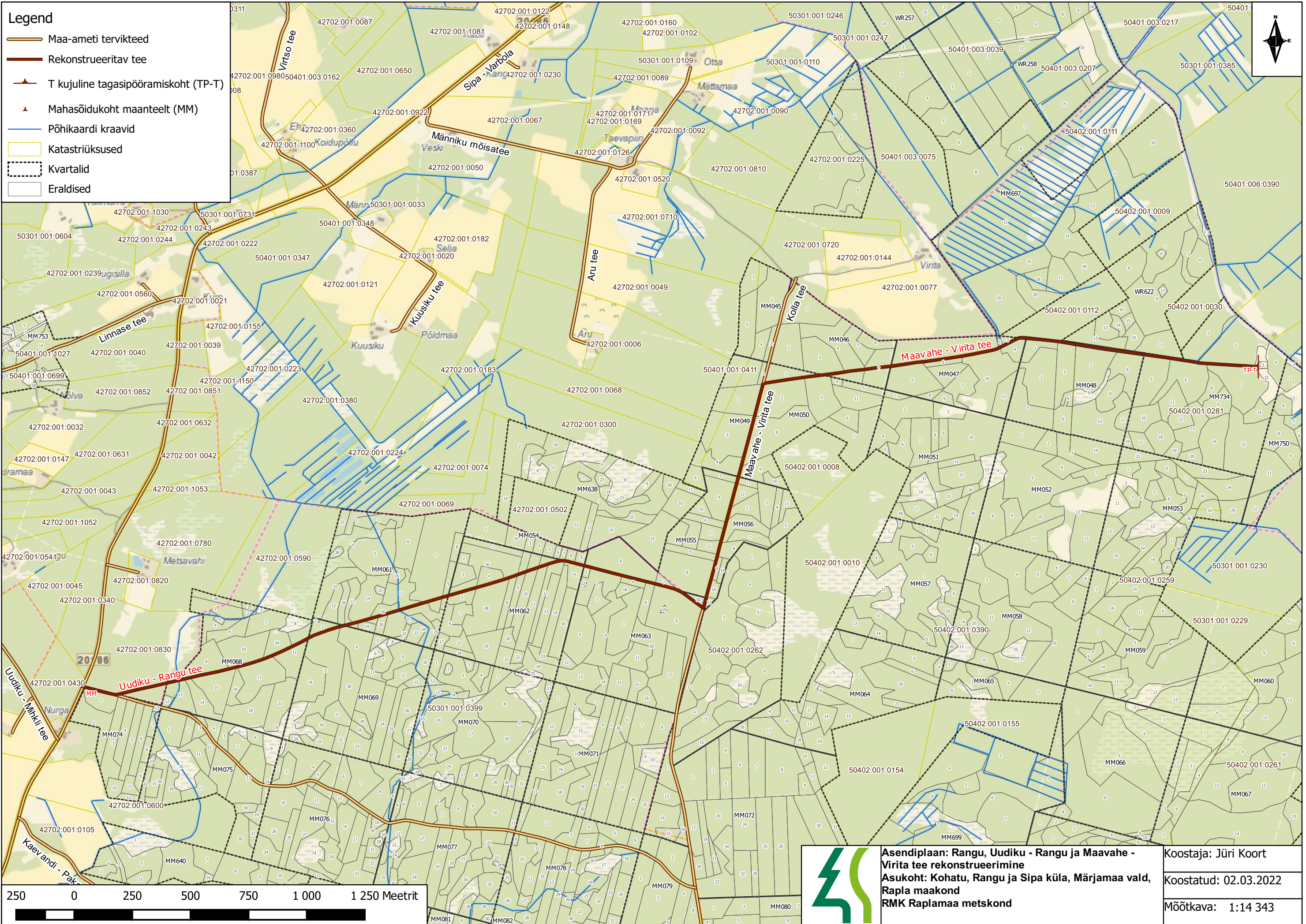


Legend

-  Maa-ameti tervikteed
-  Rekonstrueeritav tee
-  T kujuline tagasipöramiskoht (TP-T)
-  Mahasõidukoht maanteelt (MM)
-  Põhikaardi kraavid
-  Katastriüksused
-  Kvartalid
-  Eraldised



Asendiplaan: Rangu, Uudiku - Rangu ja Maavahe - Virita tee rekonstrueerimine
Asukoht: Kohatu, Rangu ja Sipa küla, Märjamaa vald, Rapla maakond
RMK Raplamaa metskond

Koostaja: Jüri Koort
 Koostatud: 02.03.2022
 Mõõtkava: 1:14 343