

BACKGROUND



TOTAL COUNTRY POPULATION:
1 331 057



Doctors and nurses
per 10 000 population



Nurse to doctor
ratio



Aged 55 years
and older (%)

	Doctors and nurses per 10 000 population	Nurse to doctor ratio	Aged 55 years and older (%)
ESTONIA	101.9	2.0	32.9
EU27+2	123.5	2.2	32.0

SAMPLE CHARACTERISTICS



Female
doctors

number of
respondents

380

proportion of responses
in relation to total
subgroup population

11.7%



Male
doctors

number of
respondents

84

proportion of responses
in relation to total
subgroup population

6.8%



Female
nurses

number of
respondents

475

proportion of responses
in relation to total
subgroup population

5.6%



Male
nurses

number of
respondents

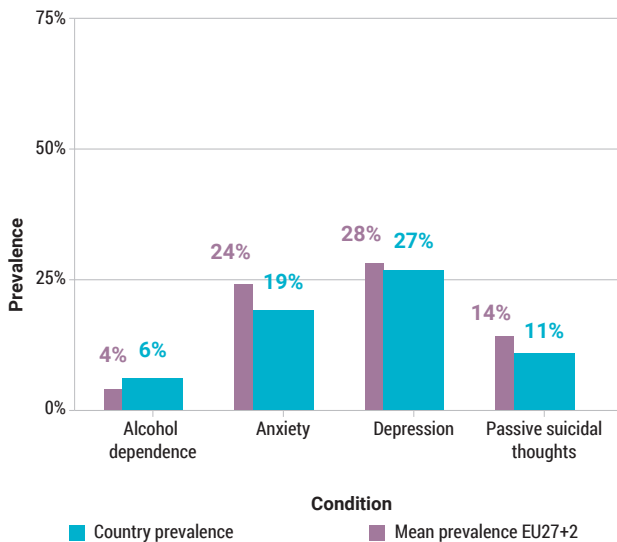
12

proportion of responses
in relation to total
subgroup population

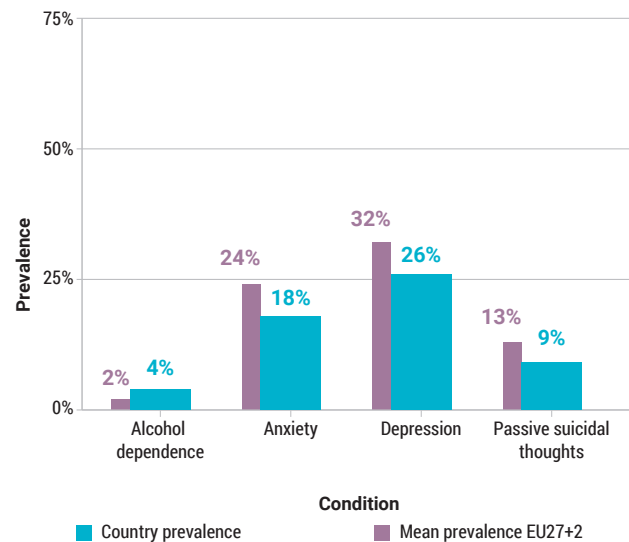
3.5%

PREVALENCE OF MENTAL HEALTH CONDITIONS

Doctors



Nurses



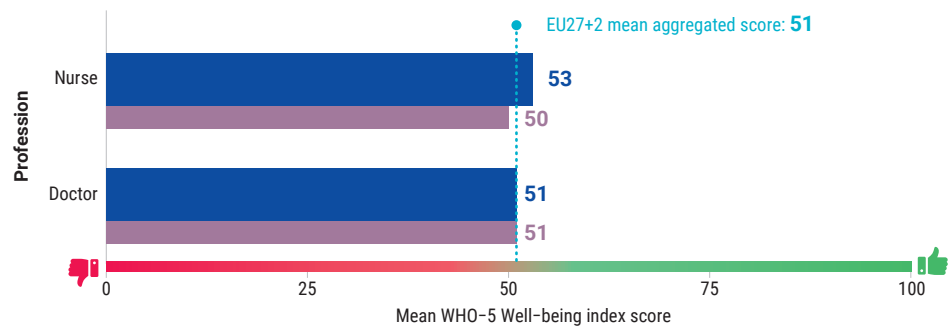
Note: Depression= Probable major depressive disorder as estimated using the PHQ-9; Anxiety= Probable generalized anxiety disorder as estimated using the GAD-7; Alcohol dependence= probable alcohol dependence as estimated using the CAGE screening tool; Passive suicidal thoughts= Presence of thoughts that one would be better off dead or of wanting to harm oneself, measured using the ninth item of the PHQ-9. For detailed information, see Annex 1: Methodology.

WELL-BEING

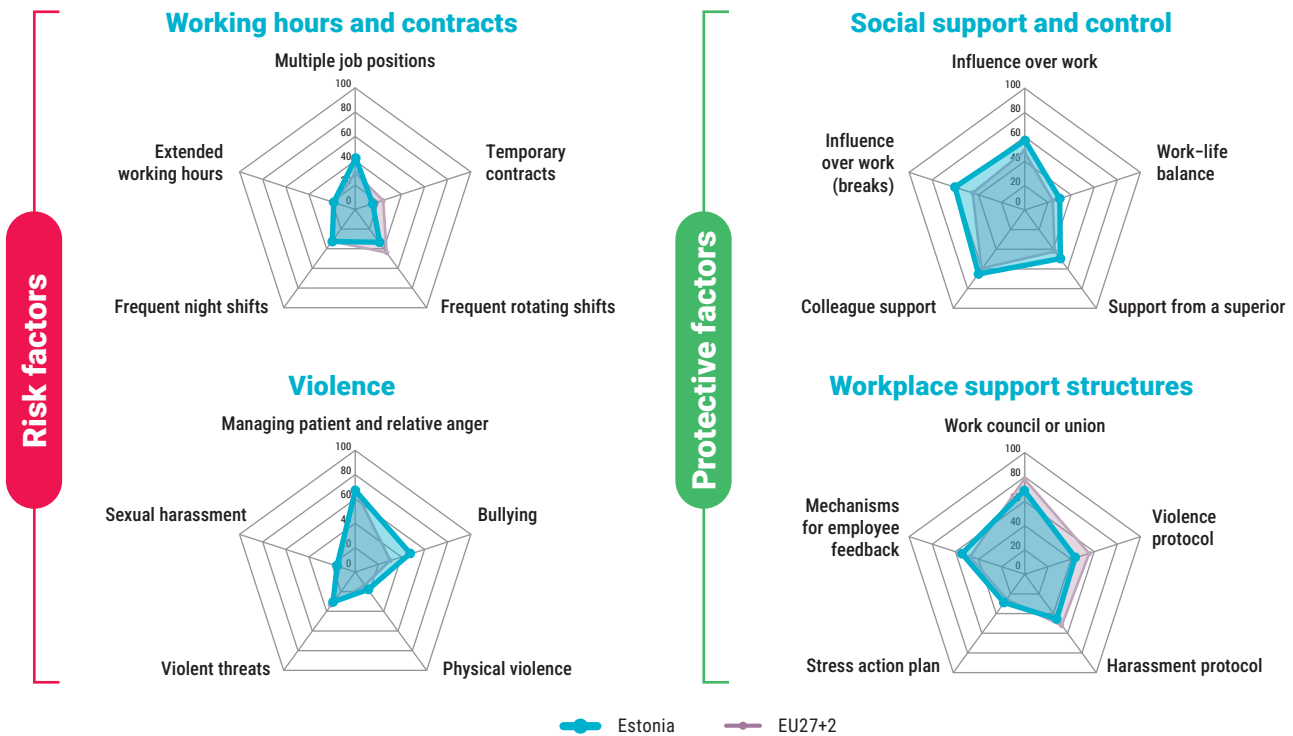
Mean emotional well-being scores by profession

The scale ranges from 0 to 100, with a score above 50 being perceived as good well-being.

■ Estonia
■ EU27+2

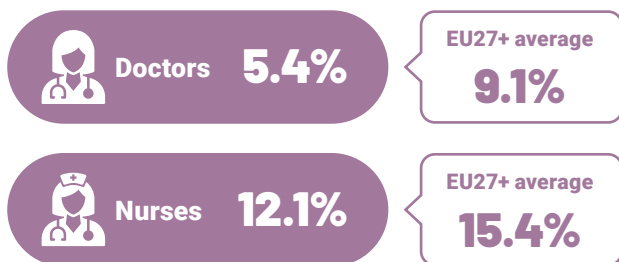


WORKING CONDITIONS



SICK LEAVE AND INTENTION TO LEAVE

Reported intention to leave profession



Sick leave due to mental health problems

