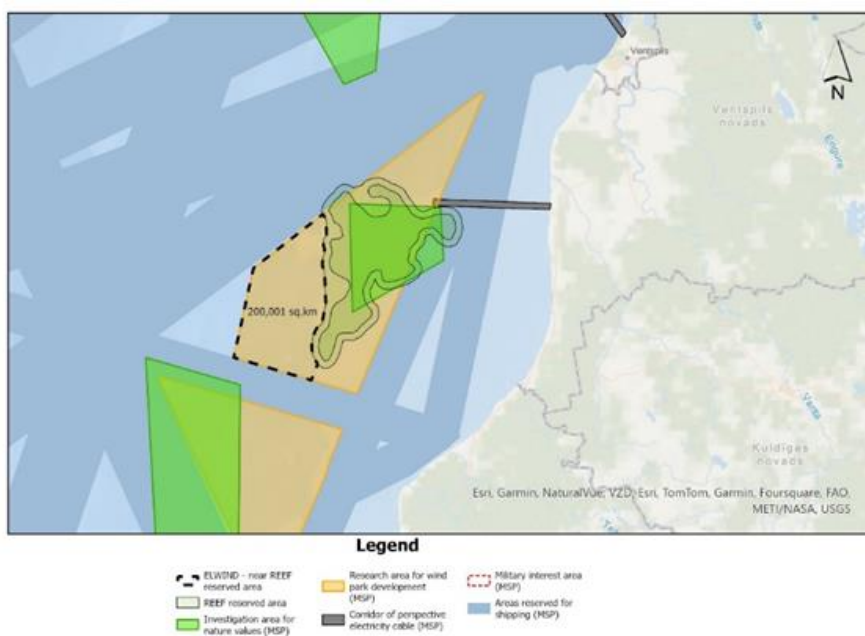


Information regarding changes of the area of the development project “*The offshore wind park ELWIND (Latvia)*” research area

On 31 July 2024 by letter No. 15-2/2024/9 “Application for changes of the project research area” the developer of the ELWIND (Latvia) project Investment and Development Agency of Latvia submitted application to the Environment State Bureau regarding changes in the project research area.



	Metric		Decimal	
FID	Y	X	Lat	Long
0	324588,32	308866,58	57,025	20,851
1	324560,15	308863,79	57,025	20,851
2	324531,92	308861,78	57,025	20,851
3	324503,65	308860,58	57,024	20,851
4	324475,35	308860,18	57,024	20,851
5	324447,05	308860,58	57,024	20,851
6	324418,77	308861,78	57,024	20,851
7	324390,54	308863,79	57,023	20,851
8	324388,72	308863,94	57,023	20,851
9	323510,90	308940,27	57,015	20,853
10	323484,56	308942,92	57,015	20,853
11	323456,49	308946,51	57,015	20,853
12	323428,53	308950,90	57,015	20,853
13	323400,71	308956,08	57,014	20,853
14	323373,04	308962,04	57,014	20,853
15	323345,55	308968,78	57,014	20,854
16	323318,27	308976,30	57,014	20,854
17	323291,21	308984,59	57,014	20,854
18	323264,39	308993,64	57,013	20,854

19	323237,84	309003,44	57,013	20,854
20	323211,58	309013,99	57,013	20,854
21	323187,17	309024,59	57,013	20,855
22	322423,85	309368,09	57,006	20,861
23	322422,31	309368,78	57,006	20,861
24	322396,69	309380,80	57,006	20,861
25	322371,42	309393,54	57,005	20,861
26	322346,52	309406,99	57,005	20,861
27	322345,53	309407,56	57,005	20,861
28	322322,01	309421,14	57,005	20,862
29	322297,91	309435,98	57,005	20,862
30	322274,24	309451,50	57,005	20,862
31	322251,01	309467,68	57,004	20,863
32	322228,26	309484,51	57,004	20,863
33	322205,99	309501,97	57,004	20,863
34	322200,97	309506,05	57,004	20,863
35	322068,66	309614,31	57,003	20,865
36	322064,51	309617,41	57,003	20,865
37	319746,07	308579,25	56,982	20,850
38	323516,95	297680,77	57,011	20,668
39	336174,41	301085,46	57,126	20,714
40	343413,04	311315,76	57,195	20,877
41	342968,30	311552,85	57,191	20,881
42	342941,51	311567,13	57,191	20,882
43	342420,39	311729,98	57,186	20,885
44	342412,34	311732,54	57,186	20,885
45	342385,53	311741,59	57,186	20,885
46	342359,69	311751,12	57,186	20,885
47	340395,50	311695,35	57,168	20,886
48	340374,79	311676,05	57,168	20,885
49	340353,55	311657,35	57,168	20,885
50	340331,78	311639,27	57,167	20,885
51	340309,51	311621,80	57,167	20,884
52	340303,56	311617,30	57,167	20,884
53	339998,23	311388,31	57,164	20,881
54	339981,43	311375,97	57,164	20,881
55	339958,21	311359,80	57,164	20,880
56	339934,54	311344,28	57,164	20,880
57	339910,44	311329,44	57,164	20,880
58	339885,93	311315,29	57,163	20,880
59	339861,03	311301,84	57,163	20,879
60	339835,75	311289,10	57,163	20,879
61	339810,13	311277,08	57,163	20,879
62	339784,18	311265,79	57,162	20,879
63	339757,92	311255,23	57,162	20,879
64	339731,37	311245,43	57,162	20,879
65	339704,56	311236,38	57,162	20,878
66	339677,49	311228,09	57,161	20,878
67	339650,21	311220,57	57,161	20,878
68	339622,72	311213,83	57,161	20,878

69	339595,06	311207,87	57,161	20,878
70	339567,23	311202,69	57,160	20,878
71	339539,27	311198,30	57,160	20,878
72	339511,20	311194,71	57,160	20,878
73	339483,04	311191,91	57,160	20,878
74	339454,81	311189,91	57,159	20,878
75	339426,53	311188,71	57,159	20,878
76	339398,23	311188,31	57,159	20,878
77	339369,93	311188,71	57,159	20,878
78	339341,66	311189,91	57,158	20,878
79	339313,43	311191,91	57,158	20,878
80	339287,80	311194,42	57,158	20,878
81	338944,31	311232,59	57,155	20,879
82	338941,77	311232,87	57,155	20,879
83	338930,70	311234,19	57,155	20,879
84	338354,22	311306,25	57,150	20,881
85	337926,90	311329,99	57,146	20,881
86	337296,08	311071,93	57,140	20,878
87	337277,13	311064,40	57,140	20,877
88	337250,58	311054,60	57,140	20,877
89	337223,77	311045,55	57,139	20,877
90	337196,71	311037,26	57,139	20,877
91	337169,42	311029,74	57,139	20,877
92	337141,94	311023,00	57,139	20,877
93	337114,27	311017,04	57,138	20,877
94	337086,45	311011,86	57,138	20,877
95	337058,49	311007,47	57,138	20,877
96	337030,41	311003,88	57,138	20,877
97	337027,88	311003,59	57,138	20,877
98	336340,89	310927,26	57,131	20,876
99	336315,26	310924,75	57,131	20,876
100	336287,03	310922,75	57,131	20,876
101	336258,76	310921,54	57,131	20,876
102	336230,46	310921,14	57,130	20,876
103	336202,16	310921,54	57,130	20,876
104	336173,88	310922,75	57,130	20,876
105	336145,65	310924,75	57,130	20,876
106	336117,49	310927,55	57,129	20,876
107	336089,42	310931,14	57,129	20,876
108	336061,46	310935,53	57,129	20,876
109	336033,63	310940,71	57,129	20,876
110	336005,97	310946,67	57,128	20,877
111	335978,48	310953,41	57,128	20,877
112	335972,80	310954,91	57,128	20,877
113	335955,42	310959,54	57,128	20,877
114	335033,48	311165,12	57,120	20,881
115	331674,92	311153,26	57,090	20,883
116	330365,90	311148,63	57,078	20,884
117	330363,61	311146,98	57,078	20,884
118	330340,39	311130,80	57,078	20,884

119	330316,72	311115,29	57,077	20,884
120	330292,62	311100,45	57,077	20,883
121	330268,11	311086,30	57,077	20,883
122	330243,21	311072,84	57,077	20,883
123	330217,94	311060,10	57,077	20,883
124	330192,31	311048,08	57,076	20,883
125	330166,36	311036,79	57,076	20,882
126	330140,10	311026,24	57,076	20,882
127	330113,55	311016,43	57,076	20,882
128	330086,74	311007,38	57,075	20,882
129	330059,68	310999,10	57,075	20,882
130	330032,39	310991,58	57,075	20,882
131	330004,90	310984,83	57,075	20,882
132	329991,75	310981,90	57,074	20,882
133	328595,27	310679,95	57,062	20,878
134	327786,18	310477,68	57,054	20,875
135	327626,80	310332,79	57,053	20,873
136	327266,38	309841,31	57,050	20,865
137	327263,97	309838,04	57,050	20,865
138	327246,82	309815,52	57,049	20,864
139	327229,04	309793,51	57,049	20,864
140	327210,65	309772,00	57,049	20,864
141	327191,65	309751,02	57,049	20,863
142	327172,07	309730,59	57,049	20,863
143	327151,91	309710,72	57,048	20,863
144	327131,21	309691,42	57,048	20,863
145	327109,96	309672,73	57,048	20,862
146	327104,70	309668,36	57,048	20,862
147	327088,20	309654,64	57,048	20,862
148	327065,93	309637,17	57,048	20,862
149	327043,17	309620,34	57,047	20,861
150	327019,95	309604,16	57,047	20,861
151	326996,28	309588,65	57,047	20,861
152	326972,18	309573,81	57,047	20,861
153	326947,67	309559,66	57,047	20,861
154	326922,77	309546,21	57,046	20,860
155	326897,50	309533,46	57,046	20,860
156	326876,63	309523,61	57,046	20,860
157	325960,65	309103,78	57,038	20,854
158	325955,89	309101,62	57,037	20,854
159	325929,94	309090,33	57,037	20,854
160	325903,68	309079,77	57,037	20,853
161	325877,13	309069,97	57,037	20,853
162	325850,32	309060,92	57,037	20,853
163	325823,26	309052,63	57,036	20,853
164	325795,97	309045,11	57,036	20,853
165	325768,48	309038,37	57,036	20,853
166	325740,82	309032,41	57,036	20,853
167	325712,99	309027,23	57,035	20,853
168	325685,41	309022,90	57,035	20,853

169	324616,58	308870,21	57,025	20,851
170	324588,32	308866,58	57,025	20,851