

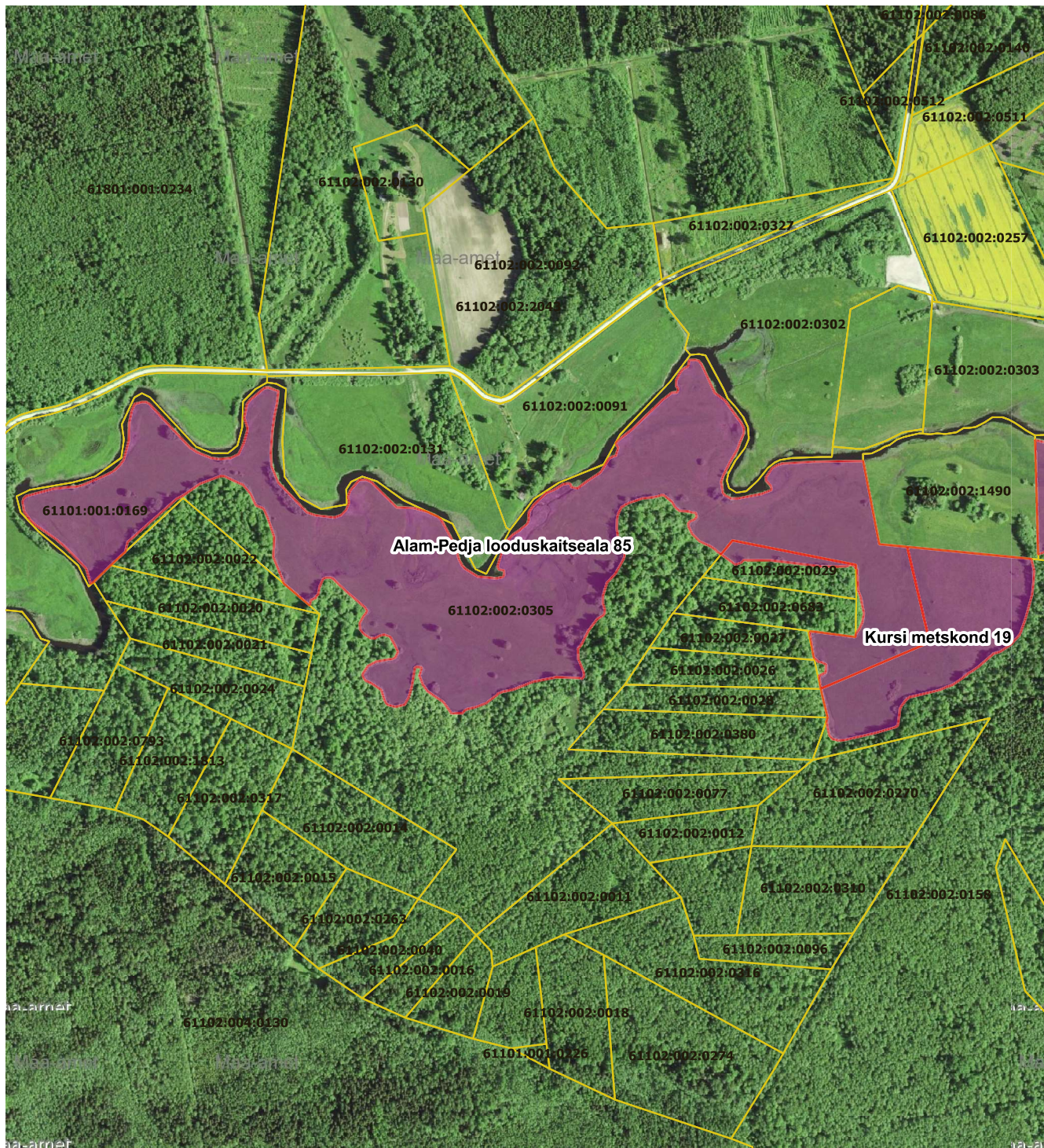
Lisa 1 RMK ja Lynxland MTÜ vahelise maarendilepingu nr 3-6.9/2022/ 16 juurde

Renditav pind:



Kursi metskond 35 - 0,41 ha

Alam-Pedja looduskaitseala 85 - 28,68 ha

Kursi metskond 19 - 5,2 ha



Mõõtkava 1:10 000

-  PLK rent
-  registreeritud katastriüksus