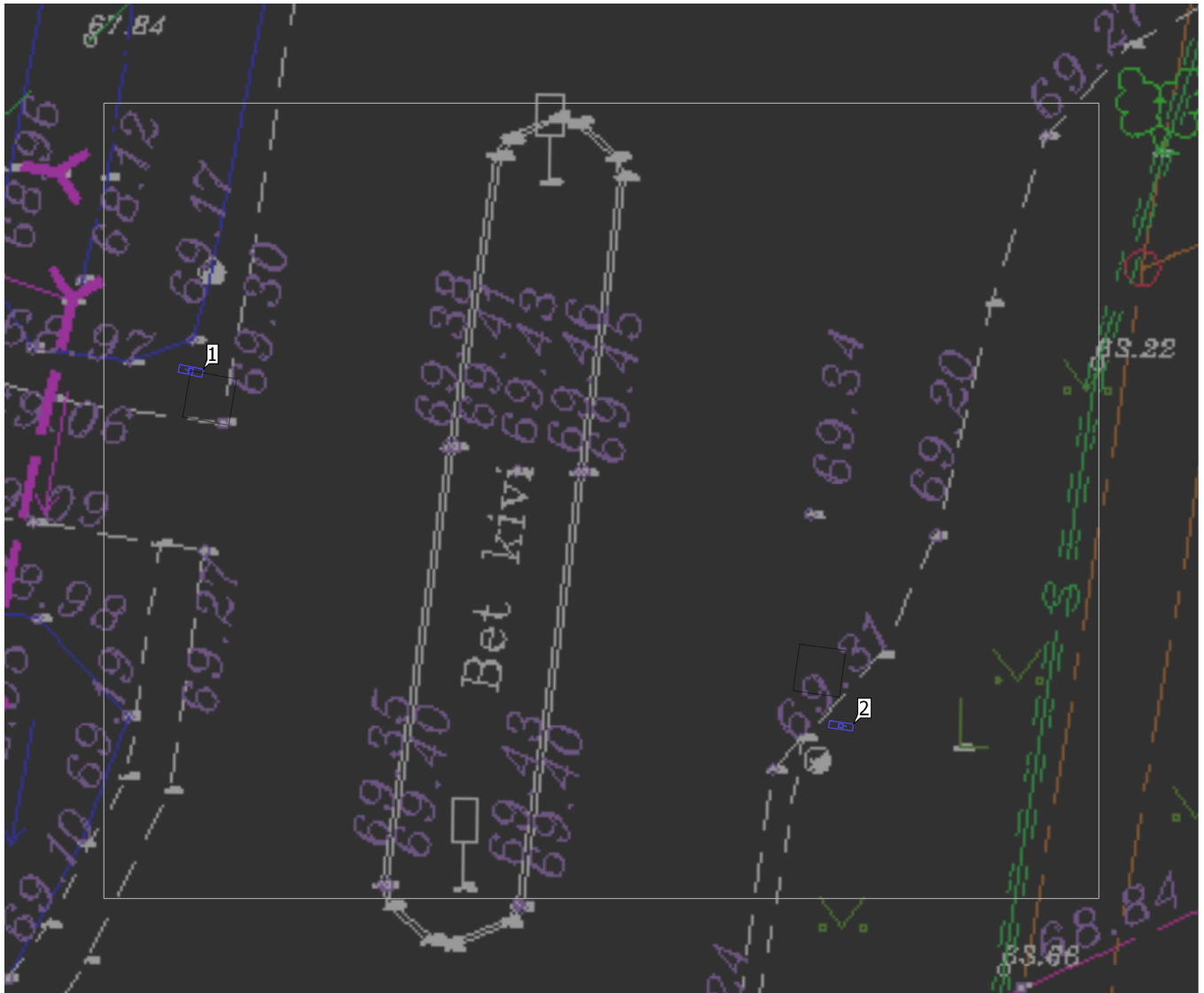


Kõpu kergliiklustee ÜK

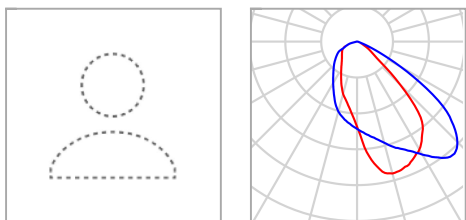
Site 1

Luminaire layout plan



Site 1

Luminaire layout plan



Manufacturer	Not yet a DIALux member	P	45.0 W
Article No.	Micro Martin 45 W 16 LEDs	$\Phi_{\text{Luminaire}}$	6389 lm
Article name	MRUE 045 757 L11 AA016_Bin-M_TH		
Fitting	1x 16 LEDs bin M		

Individual luminaires

X	Y	Mounting height	Luminaire
32.616 m	44.173 m	6.000 m	1
46.521 m	36.592 m	6.000 m	2

Site 1

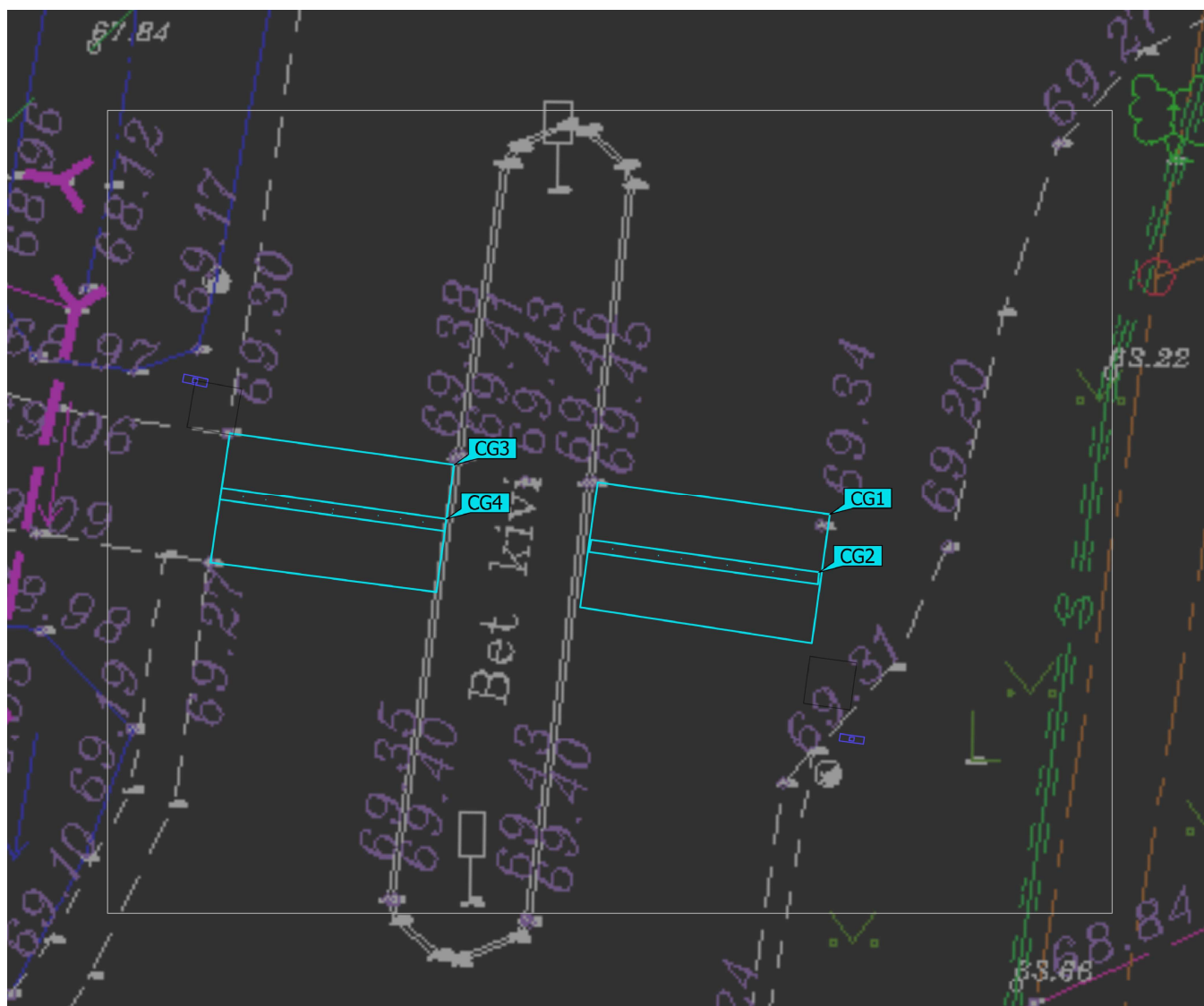
Luminaire list

Φ_{total} 12778 lm	P_{total} 90.0 W	Luminous efficacy 142.0 lm/W
-----------------------------------	------------------------------	---------------------------------

pcs.	Manufacturer	Article No.	Article name	P	Φ	Luminous efficacy
2	Not yet a DIALux member	Micro Martin 45 W 16 LEDs	MRUE 045 757 L11 AA016_Bin-M_TH	45.0 W	6389 lm	142.0 lm/W

Site 1 (Light scene 1)

Calculation objects



Site 1 (Light scene 1)

Calculation objects

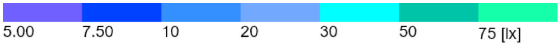
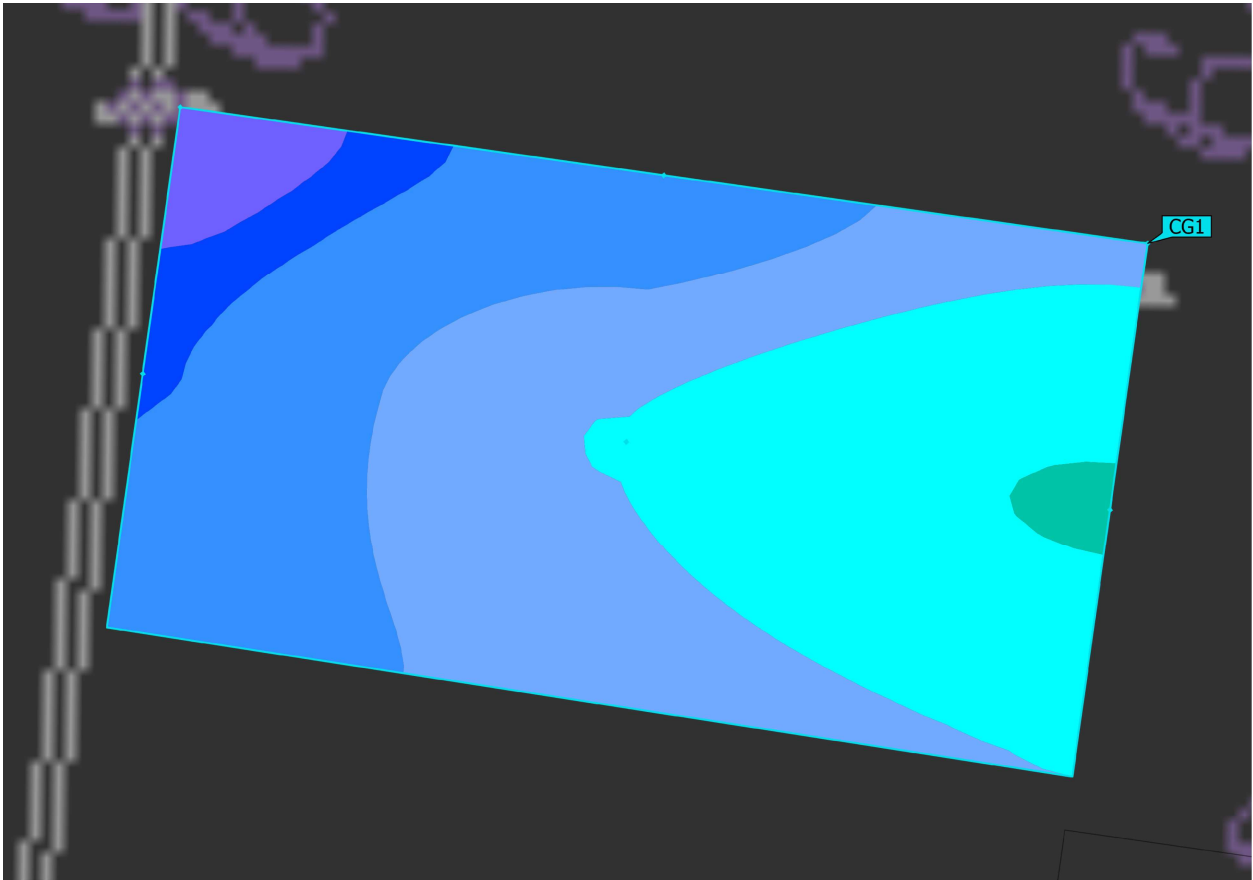
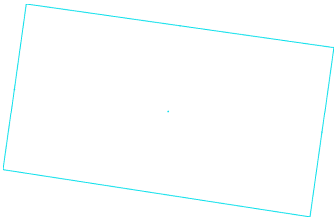
Calculation surfaces

Properties	\bar{E}	E_{min}	E_{max}	$U_o (g_1)$	g_2	Index
Nurgapunktid suund paremalt Vertical illuminance Rotation: 262.1°, Height: 1.000 m	22.8 lx	5.34 lx	51.7 lx	0.23	0.10	CG1
Keskterg suund paremalt Vertical illuminance Rotation: 263.3°, Height: 1.000 m	31.1 lx	13.1 lx	49.6 lx	0.42	0.26	CG2
Nurgapunktid suund vasakult Vertical illuminance Rotation: 82.2°, Height: 1.000 m	34.2 lx	19.6 lx	48.9 lx	0.57	0.40	CG3
Keskterg suund vasakult Vertical illuminance Rotation: 84.0°, Height: 1.000 m	32.9 lx	15.8 lx	49.3 lx	0.48	0.32	CG4

Utilisation profile: DIALux presetting (5.1.4 Standard (outdoor transportation area))

Site 1 (Light scene 1)

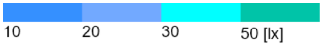
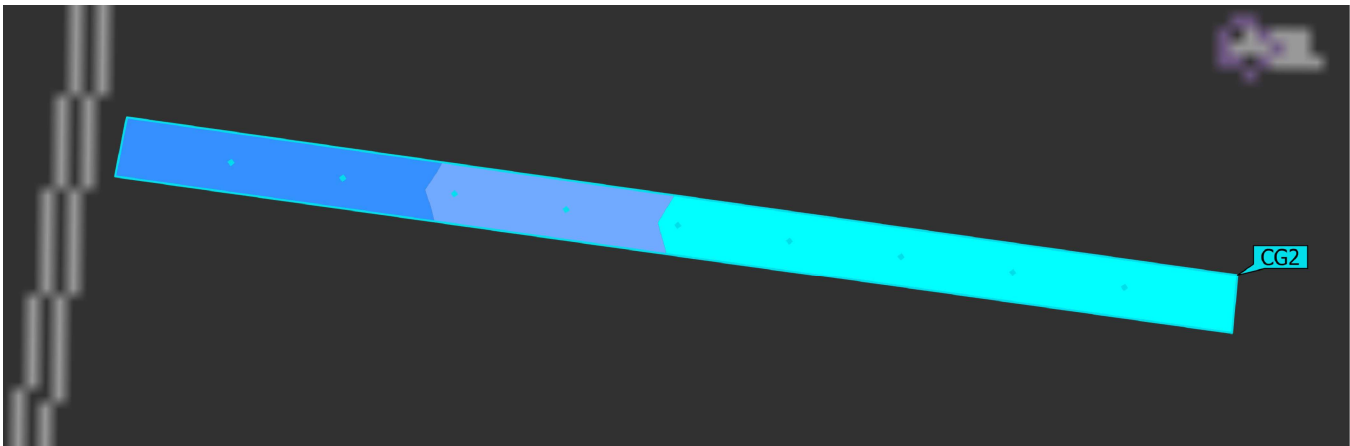
Nurgapunktid suund paremalt



Properties	\bar{E}	E_{min}	E_{max}	$U_o (g_1)$	g_2	Index
Nurgapunktid suund paremalt	22.8 lx	5.34 lx	51.7 lx	0.23	0.10	CG1
Vertical illuminance						
Rotation: 262.1°, Height: 1.000 m						

Utilisation profile: DIALux presetting (5.1.4 Standard (outdoor transportation area))

Site 1 (Light scene 1)
Kesktelg suund paremalt

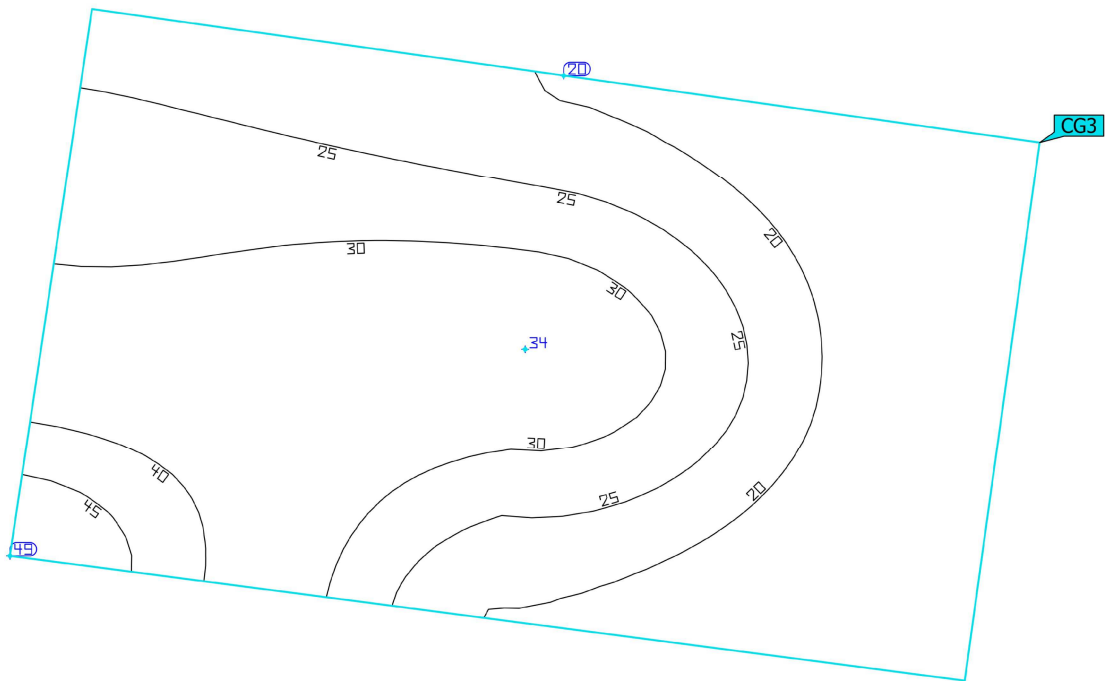
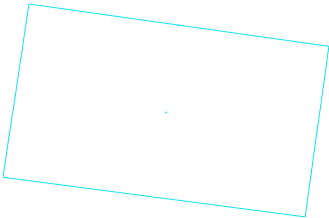


Properties	\bar{E}	E_{min}	E_{max}	$U_o (g_1)$	g_2	Index
Kesktelg suund paremalt Vertical illuminance Rotation: 263.3°, Height: 1.000 m	31.1 lx	13.1 lx	49.6 lx	0.42	0.26	CG2

Utilisation profile: DIALux presetting (5.1.4 Standard (outdoor transportation area))

Site 1 (Light scene 1)

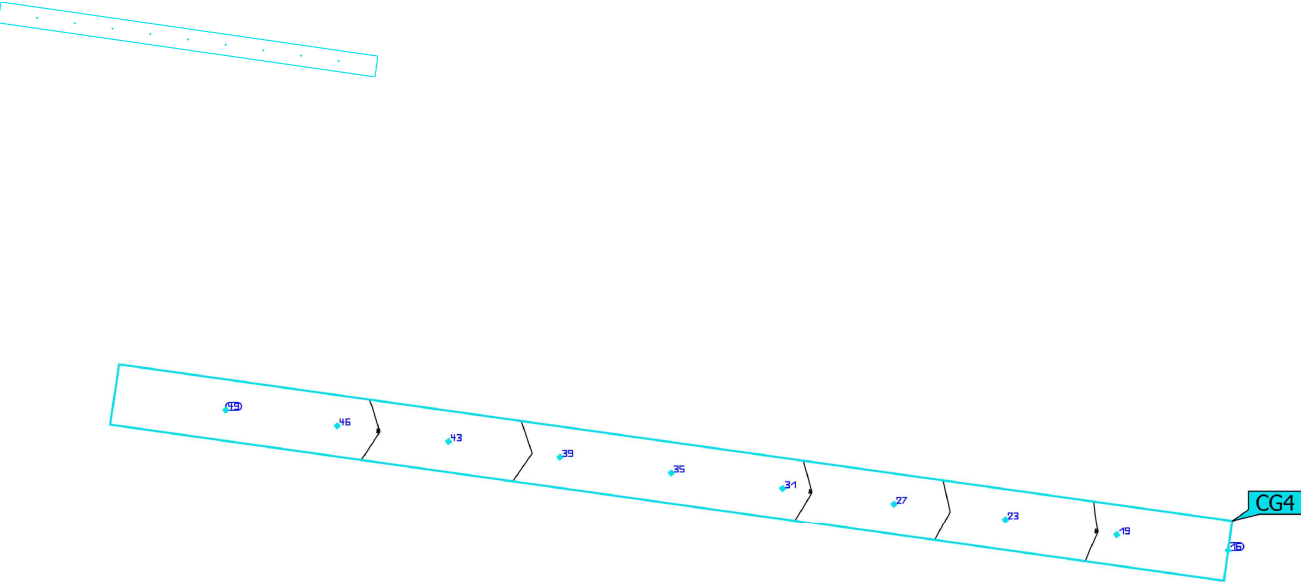
Nurgapunktid suund vasakult



Properties	\bar{E}	E_{min}	E_{max}	$U_o (g_1)$	g_2	Index
Nurgapunktid suund vasakult	34.2 lx	19.6 lx	48.9 lx	0.57	0.40	CG3
Vertical illuminance						
Rotation: 82.2°, Height: 1.000 m						

Utilisation profile: DIALux presetting (5.1.4 Standard (outdoor transportation area))

Site 1 (Light scene 1)
Kesktele suund vasakult



Properties	\bar{E}	E_{min}	E_{max}	$U_o (g_1)$	g_2	Index
Kesktele suund vasakult Vertical illuminance Rotation: 84.0°, Height: 1.000 m	32.9 lx	15.8 lx	49.3 lx	0.48	0.32	CG4

Utilisation profile: DIALux presetting (5.1.4 Standard (outdoor transportation area))