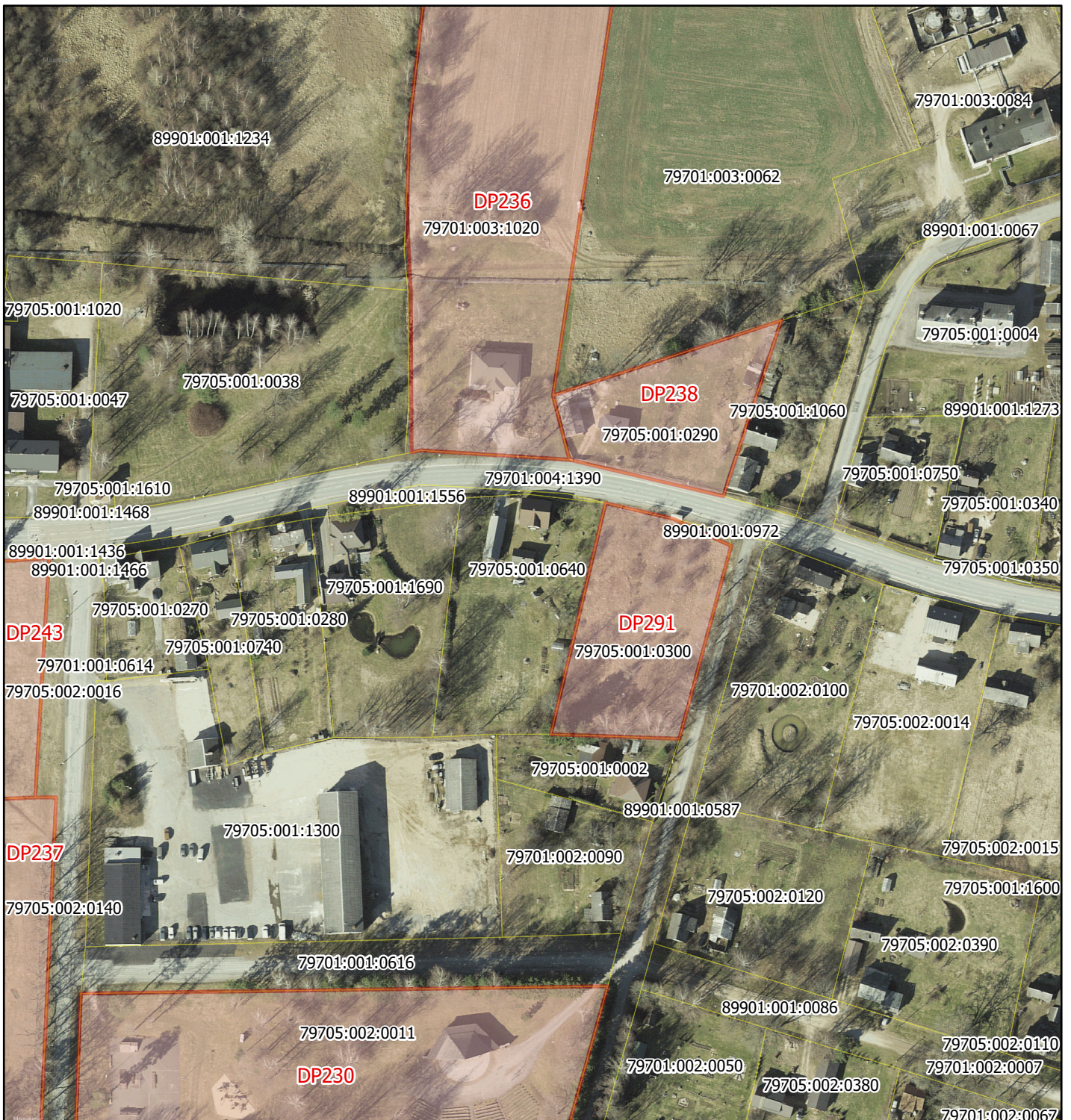
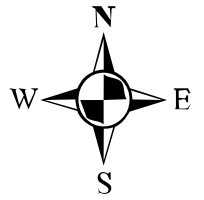




Lisa
Posti 57 detailplaneeringuala (DP291) ASENDIPLAAN Mustla alevikus.

M1:2000



-  detailplaneeringuala
-  katastriüksuse piir

Asendiplaani koostas:
12.02.2021

Raivo Laidma, planeeringuspetsialist
Viljandi Vallavalitsus

Aluskaart: Maa-amet WMS