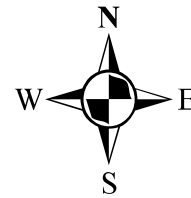
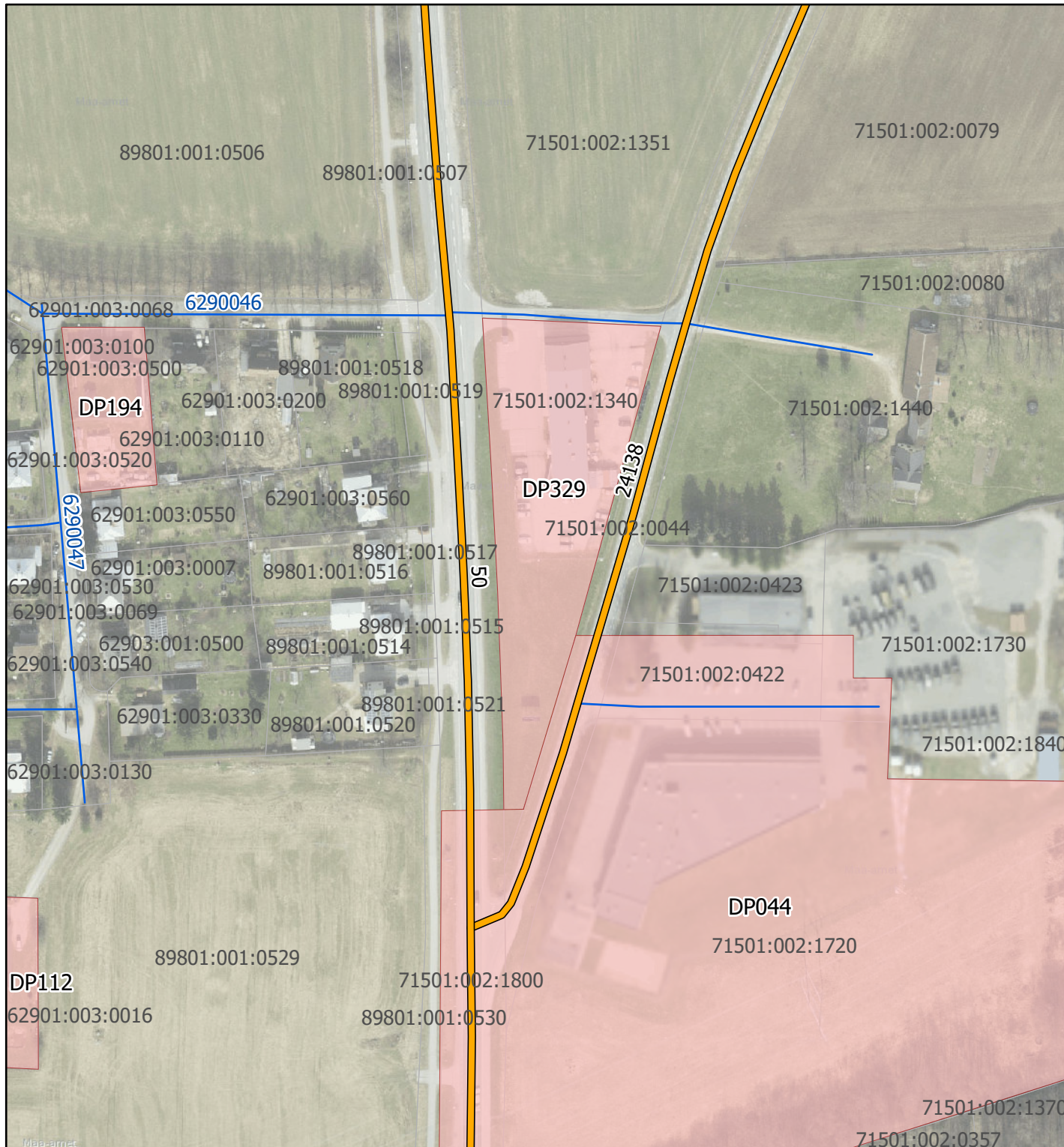






Lisa 1
Karula tee 2//Tallinna mnt 88 detailplaneeringuala (DP329) ASENDIPLAAN
Peetrimõisa külas



M1:2 000



-  detailplaneeringuala
-  riigitee
-  valla- ja erateed
-  katastriüksuse piir (seisuga 08.09.2022)

Asendiplaani koostas:
08.09.2022

Raivo Laidma, planeeringuspetsialist
Viljandi Vallavalitsus

Aluskaart: Maa-amet WMS