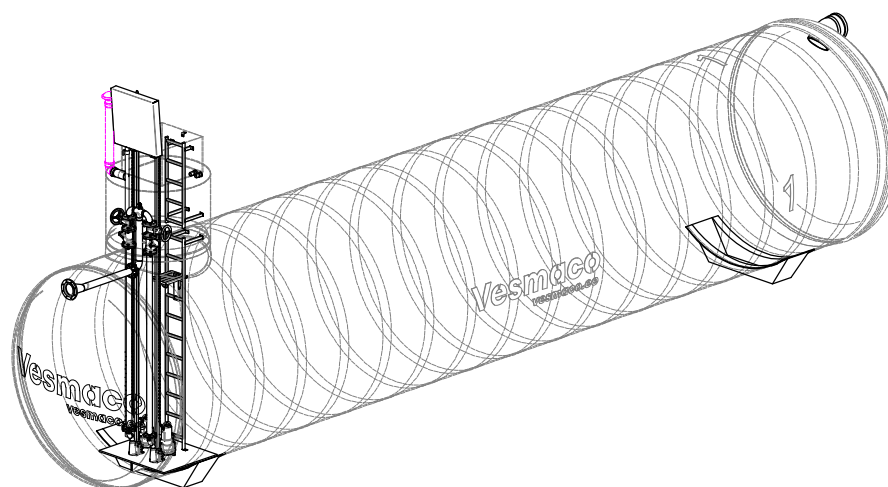
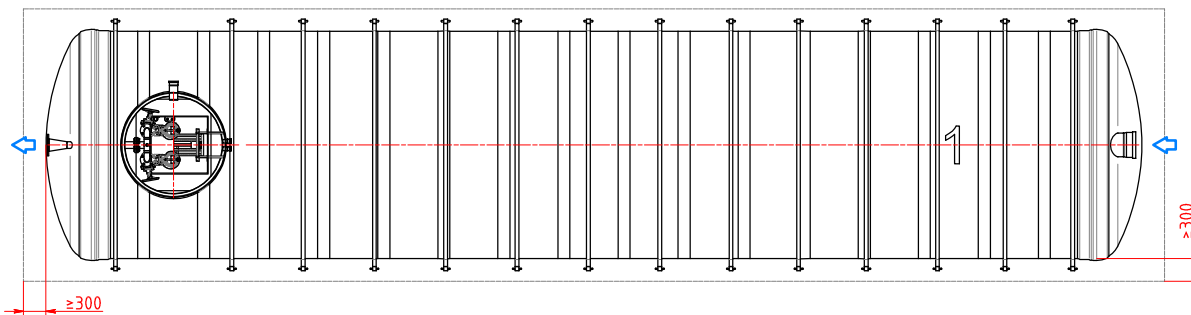
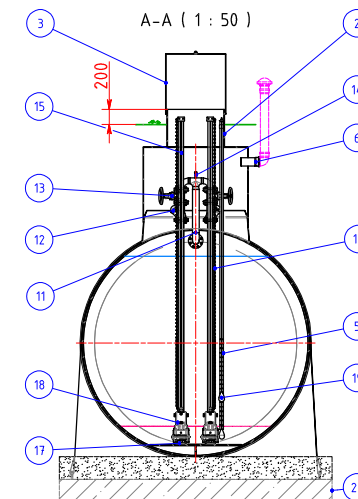
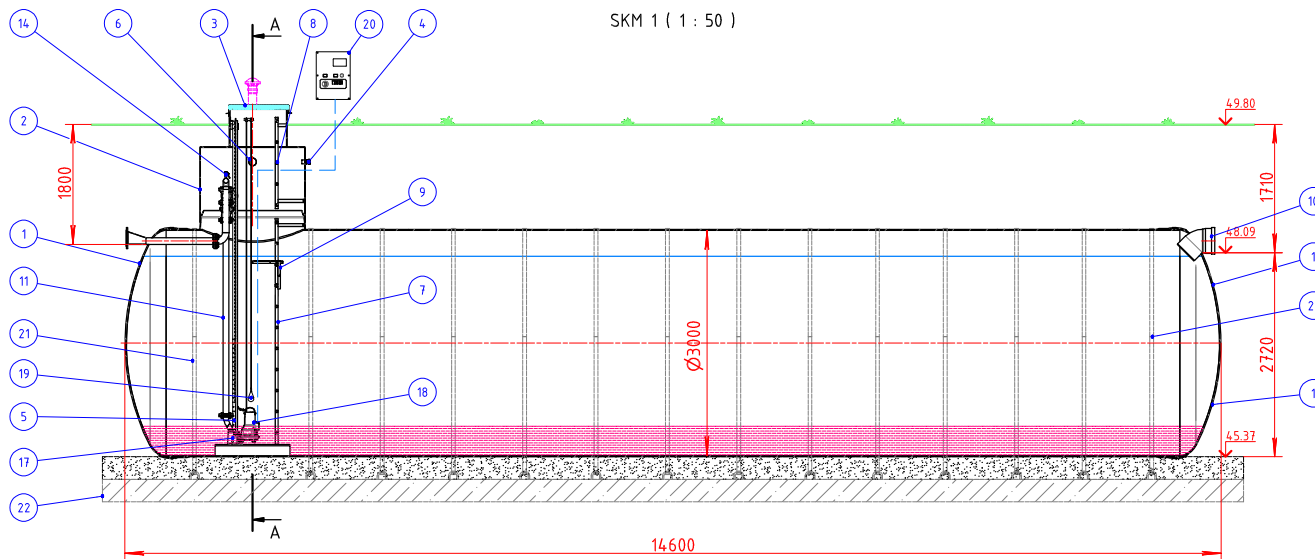


SKM 1 ( 1 : 50 )



h = (installation height, mm)

h = \_\_\_\_\_ mm

"For installation instructions, check ""Installation Manual for Underground Horizontal Tanks of Glass-Reinforced Plastic (GRP)"" or special instructions provided with the product.  
Positions of anchoring and anchor straps are shown as example and might vary from their actual positions."

Vesmaco OÜ reserves the right to make unilaterally changes.

1	Mahuti-pumpla / Pumping station MEP-100	Ø3000x14600 mm	1
Klaasplastik (GRP) "Vesmaco Composite", pH 3-10, temperatuuri taluvus max 40°C / Glass-reinforce plastic (GRP) "Vesmaco Composite", pH 3-10, heat resistance max 40°C			
Maht / Total volume		100100 l	
Kasulik maht / Working volume		86300 l	
2	Hooduskaev / Manhole	GRP	1
3	Luuk / Cover	Aluminium + PUR	1
4	Kaabli sisseviik / Cable aperture	PVC	2
5	Kaablikaitsetoru / Hydrostatic sensor conduit	PVC	1
6	Vent. ühendus / Ventilation connection	PVC	1
7	Redel / Ladder with no-slip steps	EN 14307/304L	1
8	Redel / Ladder with no-slip steps	EN 14307/304L	1
9	Platvorm / Service step-platform (foldable)	EN 14307/304L	1
10	Sissevoolutoru / Inlet pipe	PVC NAL	1
11	Survetorustik (PP-kattega äärikud) / Pressure pipeline (PP-coated flanges)	EN 14307/304L	1
12	Tagasilöögilapp / Ball check valve	Cast iron	2
13	Kummikiitsiber / Gate valve	Cast iron	2
14	Kuulventiil / Pressure gauge (manometer) connection	EN 14404/316L	1
15	Pumba juhtsiin / Pump guide rail	EN 14307/304L	4
16	Pumba tõstekeht / Lifting chain	EN 14404/316L	2
17	Põhjalülitik / Auto-coupling Flygt DN50		2
18	Pump / NP 3069.160 SH 3- Adaptive 270 50 Hz   2.4 kw		2
19	Ujuklüliti / Float switch		2
20	Juhtimiskilp / Pumps controller		1
21	Ankurdusrihm / Anchor strap (polyester) with tensioner (galv. steel)		14
22	Alusplaat / Anchore plate (client's supply)	R/C	(1)

Technical reference  
Jevgeni Toom  
Created by  
Maksim Bozhko  
Approved by  
Jevgeni Toom

Title, Supplementary title  
Sademevee mahuti-pumpla 100 m³, No. 1 / Stormwater storage tank 100 m³, No. 1  
A2 1 : 50

Document type  
General assembly drawing  
Document status  
Customer drawing  
Date of issue  
29.09.2023  
Rev.  
C 1/1

**Vesmaco**  
23051611\_MEP-100\_D3000-L14600-DN50-65

Vesmaco OÜ  
Kafusepapi 6, 11412 Tallinn, Estonia  
www.vesmaco.ee  
Customer  
03 TECHNOLOGY OÜ  
Project  
Ravila tn. 77, Tartu