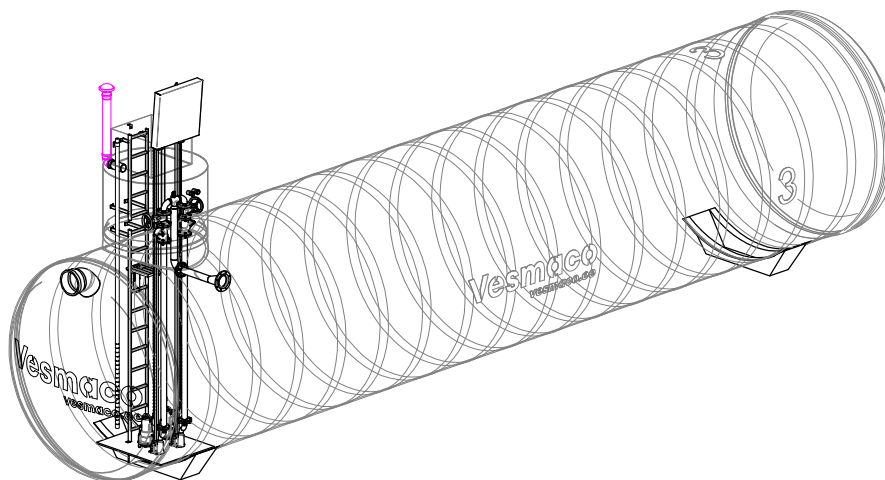
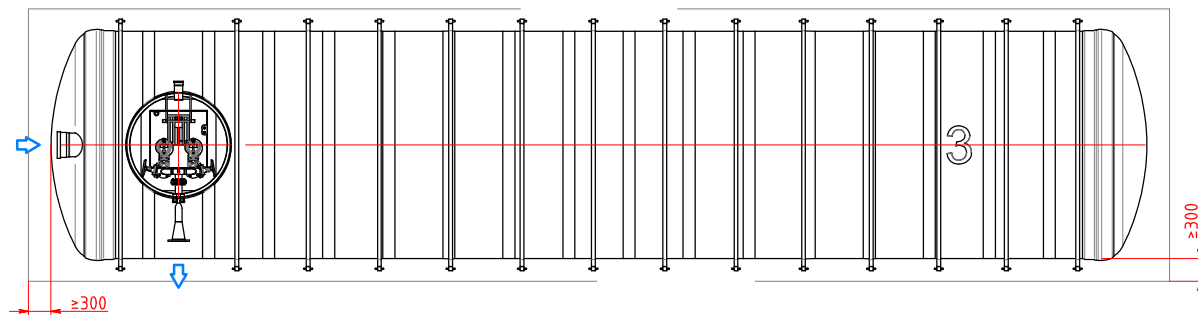
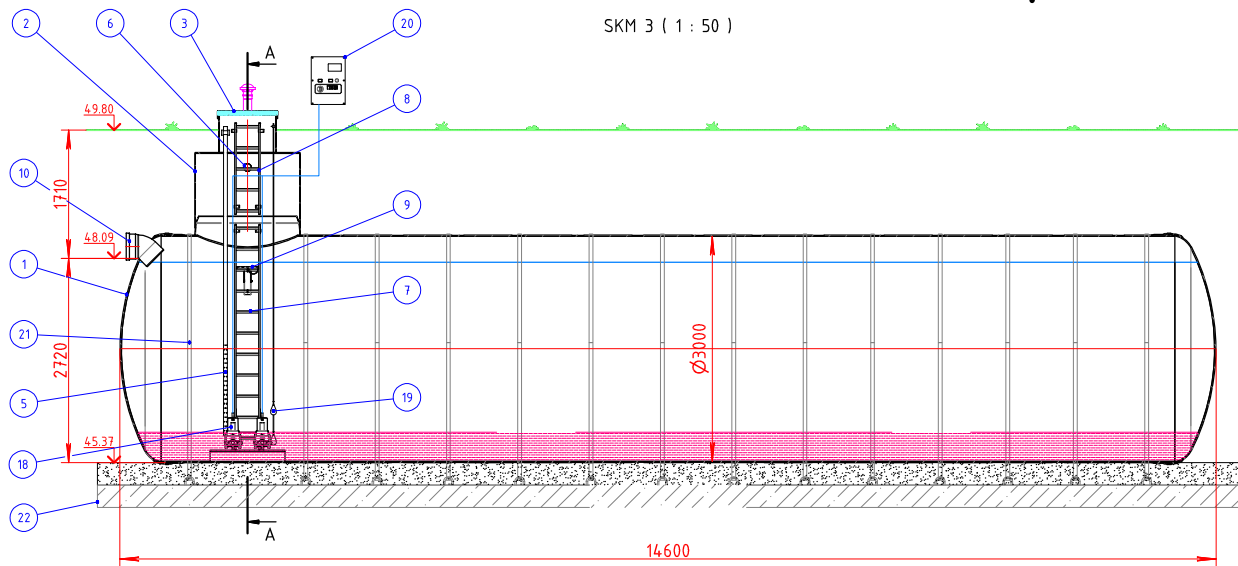


SKM 3 (1 : 50)

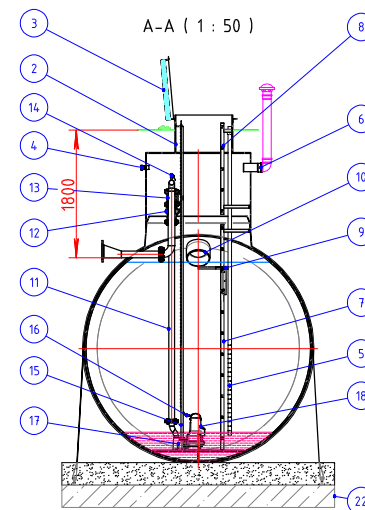


h = (installation height, mm)
h = _____ mm

"For installation instructions, check ""Installation Manual for Underground Horizontal Tanks of Glass-Reinforced Plastic (GRP)"" or special instructions provided with the product.
Positions of anchoring and anchor straps are shown as example and might vary from their actual positions."

Vesmaco OÜ reserves the right to make unilaterally changes.

A-A (1 : 50)



1	Mahuti-pumpla / Pumping station MEP-100	Ø3000x14600 mm	1
Klaasplastik (GRP) "Vesmaco Composite", pH 3-10, temperatuuri taluvus max 40°C / Glass-reinforce plastic (GRP) "Vesmaco Composite", pH 3-10, heat resistance max 40°C			
Maht / Total volume		100100 l	
Kasulik maht / Working volume		86300 l	
2	Hooduskaev / Manhole	GRP	1
3	Luuk / Cover	Aluminium + PUR	1
4	Kaabli sisseviik / Cable aperture	PVC	2
5	Kaablikaitsetoru / Hydrostatic sensor conduit	PVC	1
6	Vent. ühendus / Ventilation connection	PVC	1
7	Redel / Ladder with no-slip steps	EN 14307/304L	1
8	Redel / Ladder with no-slip steps	EN 14307/304L	1
9	Platvorm / Service step-platform (foldable)	EN 14307/304L	1
10	Sissevoolutoru / Inlet pipe	PVC NAL	1
11	Survetorustik (PP-kattega äärikud) / Pressure pipeline (PP-coated flanges)	EN 14307/304L	1
12	Tagasilööklapp / Ball check valve	Cast iron	2
13	Kummikitsisiber / Gate valve	Cast iron	2
14	Kuulventiil / Pressure gauge (manometer) connection	EN 14404/316L	1
15	Pumba juhtsiin / Pump guide rail	EN 14307/304L	4
16	Pumba fõstekett / Lifting chain	EN 14404/316L	2
17	Põhjalülitik / Auto-coupling	Flygt DN50	2
18	Pump / NP 3069.160 SH 3- Adaptive 270 50 Hz	2.4 kw	2
19	Ujuklüliti / Float switch		2
20	Juhtimisikilp / Pumps controller		1
21	Ankurdusrihm / Anchor strap (polyester) with tensioner (galv. steel)		14
22	Alusplaat / Anchore plate (client's supply)	R/C	1

Technical reference		Created by	Approved by
Jevgeni Toom		Maksim Bozhko	Jevgeni Toom
Title, Supplementary title			
Sademevee mahuti-pumpla 100 m³, No. 3 / Stormwater storage tank 100 m³, No. 3			
Document type	Document status	Date of issue	Rev.
General assembly drawing	Customer drawing	30.09.2023	C
Vesmaco		23051611_MEP-100_D3000-L14600-DN50-65	
Vesmaco OÜ		Customer	
Kafusepapi 6, 11412 Tallinn, Estonia		03 TECHNOLOGY OÜ	
www.vesmaco.ee		Project	
		Ravila tn. 77, Tartu	