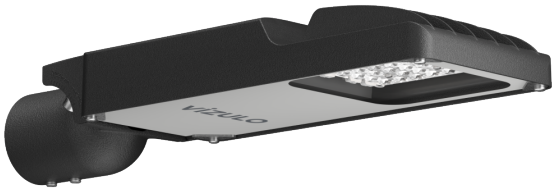


MICRO MARTIN Eco
55303160
MRUE 035 730 L22 AA016 CJN ZG1



CE   **ZD⁴** RoHS

Color

RAL 7035

Electrical

Input power	35 W
Input voltage	220 - 240 V
Frequency	50 - 60 Hz
Power factor	0.99
Inrush current	20.3 A / 346 µs
Stand-by power	0.3 W

Optical

Optic name	L22
Optic type	TYPE-III
Luminous flux	4698 lm ±10%
Luminous efficacy	134 lm/W
Performance temperature Tq	+25 °C
Constant light output	No
Color rendering index	>70
Color temperature	3000 K
Color tolerance	5 SDCM
ULOR	0
LED quantity	16

Lifetime

Lumen depreciation	L90 after 100 000 h
Driver failure rate	<10% in 100 000 h
Warranty	5 years
Ambient temperature range	-40 ... +50 °C

Protection

Protection class	Class I
Surge protection L-N	6 kV
Surge protection L/N-PE	10 kV
LED module thermal protection w/ NTC	No
Max products per MCB B16	17
Ingress protection	IP66
Impact resistance	IK08

Housing

Body material	Die-cast aluminium
Cover material	Flat tempered glass
Optic material	PMMA
Color	RAL 7035 (light grey)
Dimensions	517 x 170 x 103 mm
Max wind load area SCd	0.04 m ²
Mounting	Post top / side-entry, 60 mm
LED module replaceability	Replaceable by a professional
Driver replaceability	Replaceable by a professional
Accessibility of electronic components	With tools

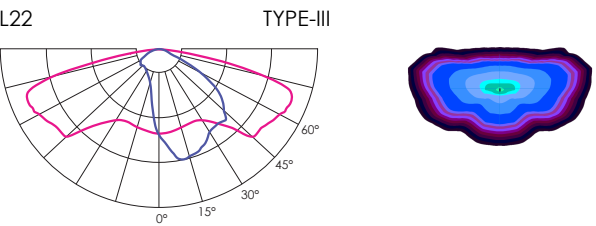
Controls

Dimming range	3 - 100%
Socket	Zhaga (D4i) on top

Approvals

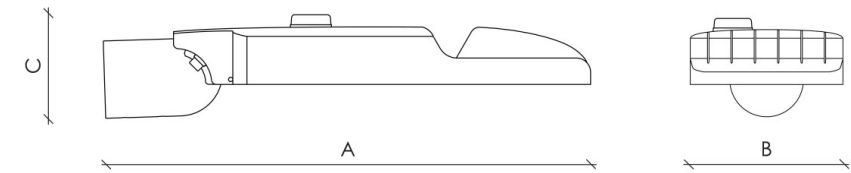
CE	Yes
ENEC	Yes
ENEC+	Yes
Zhaga-D4i	Yes
RoHS	Yes

Light distribution



Dimensions

A x B x C (mm): 517 x 170 x 103



Product images

